



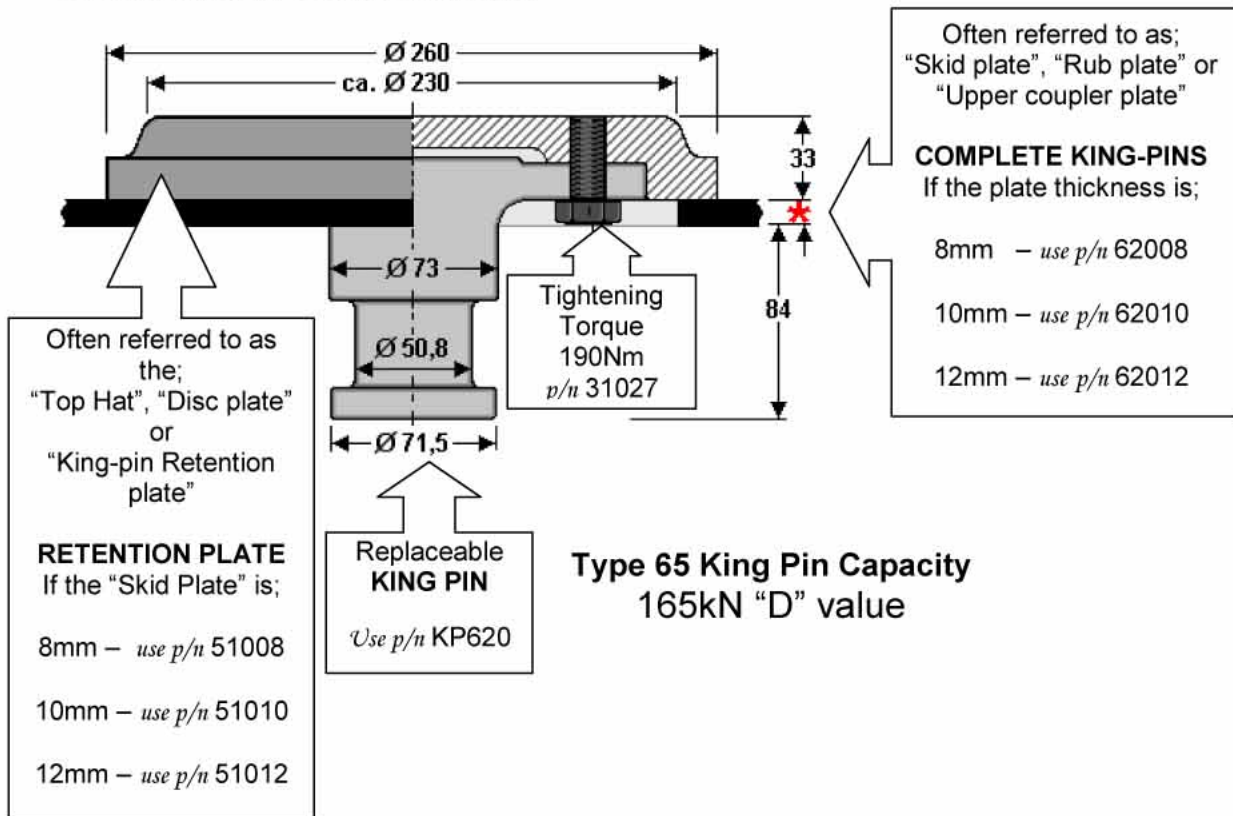
KINGPIN TYPE 65 – 2”

Features and Benefits



- The “Eurohitch” Type 65 king pin is a drop-out style pin which means it is fast & easy to replace.
- It is also suitable for rear axle steering systems
- Made from forged Chromium Molybdenum steel for maximum strength.
- The manufacturing process includes heat treatment which provides even more strength with a lower wear rate.
- Made to Din 74083 and ISO 337 standards for interchangeability.
- And conforms to the tough EC-directive EC/94/20 ensuring a premium safety standard is manufactured into each Type 65 king pin.

Installation Dimensions





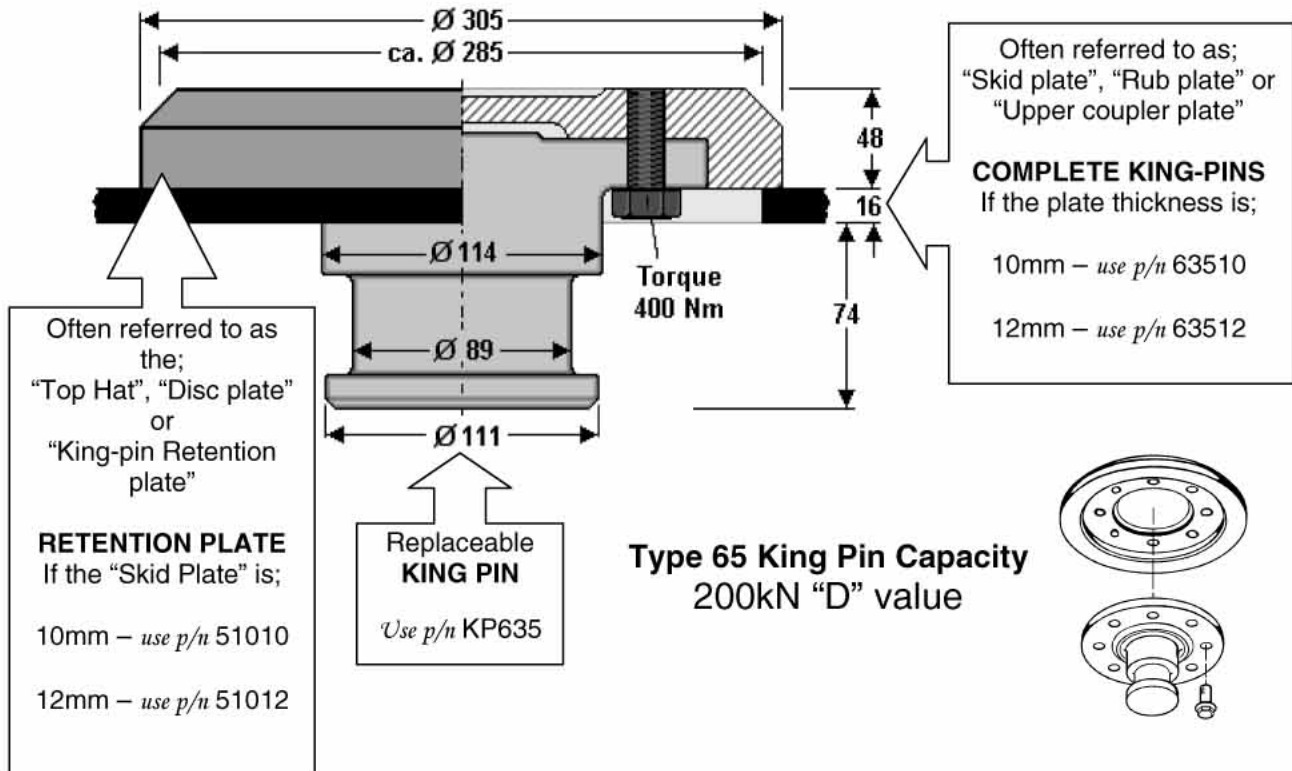
KINGPINS TYPE 65 – 3 1/2”

Features and Benefits



- The “Eurohitch” Type 65 king pin is a drop-out style pin which means it is fast & easy to replace.
- It is also suitable for rear axle steering systems
- Made from forged Chromium Molybdenum steel for maximum strength.
- The manufacturing process includes heat treatment which provides even more strength with a lower wear rate.
- Made to Din 74083 and ISO 337 standards for interchangeability.
- And conforms to the tough EC-directive EC/94/20 ensuring a premium safety standard is manufactured into each Type 65 king pin.

Installation Dimensions



QUALITY ON THE MOVE

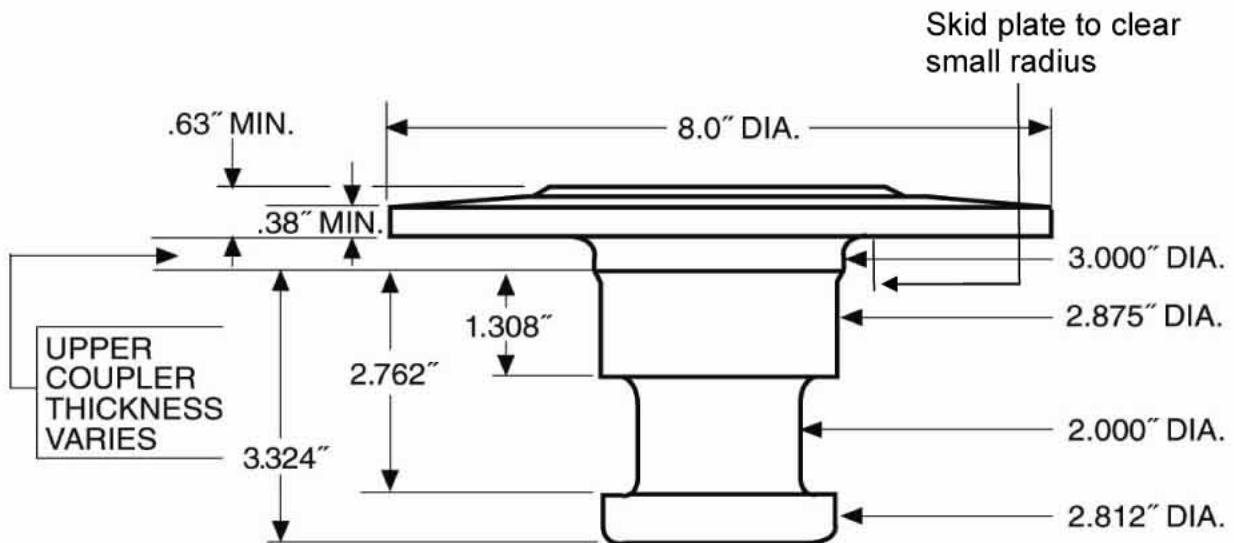
TRANSPORT SPECIALTIES LIMITED - An ISO 9001 Certified Distributor - P.O. Box 98 971, S.A.M.C.
Cnr Ash & Kerrs Rds, Wiri, Auckland - Phone (09) 980 7300, Fax (09) 980 7341
E-mail: mailroom@transpecs.co.nz Website: www.transpecs.co.nz



KINGPIN KP-T-809 – 2"

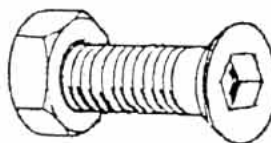
MANUFACTURED TO

- Meet SAE Dimensional Standard J700
- Meet or exceed SAE performance Standard J133



MODEL	BOLSTER PLATE THICKNESS	HOLES
T809 T809/8 T809/12	3/8" (10mm) 5/16" (8mm) 1/2" (12mm)	8 EQUALLY SPACED 17/32" HOLES ON 6.75" PCD

Check your kingpin periodically for safety



PART No. 174N
Special 2" x 0.5" UNF
Countersunk set screw complete
with nyloc locking nut. Must be
used with the drilled kingpins
(8 per pack).
Torque 113 Nm



TRANSPORT SPECIALTIES LIMITED - An ISO 9001 Certified Distributor - P.O. Box 98 971, S.A.M.C.
Cnr Ash & Kerrs Rds, Wiri, Auckland - Phone (09) 980 7300, Fax (09) 980 7341
E-mail: mailroom@transpecs.co.nz Website: www.transpecs.co.nz

ABA KINGPIN **19/095 - 2"**

Meets or exceeds Standards

- BS AUIC-1989 SMMT37
- DIN 74080
- ISO 337
- SAE BNA
- RDW

BOLT UNDER KING PIN (Counterbored)



19/095 EN14B Material
Torque 140Nm

KING PIN BOLT KIT



19-086 Bolt Kit pkt (8) for use with
19-085 & 19-095 King Pins.

Check your kingpin periodically for safety



TRANSPORT SPECIALTIES LIMITED - **An ISO 9001 Certified Distributor** - P.O. Box 98 971, S.A.M.C.
Cnr Ash & Kerrs Rds, Wiri, Auckland - Phone (09) 980 7300, Fax (09) 980 7341
E-mail: mailroom@transpecs.co.nz Website: www.transpecs.co.nz