



## RECTANGULAR & SQUARE SHANK DRAWBARS



### **DB-1228-1 (TSL part number 1228/1)**

#### **CAPACITY:**

4,000 lbs. Maximum Vertical (Tongue) Load  
20,000 lbs. Maximum Gross Trailer Weight

NOTE: When used for hinged tongue trailer applications where maximum vertical load cannot exceed 500 lbs., the maximum gross trailer weight is 60,000 lbs.

#### **DESCRIPTION:**

Forged steel bolt-on drawbar with induction hardened wear area and 1<sup>1</sup>/<sub>4</sub>" x 1<sup>1</sup>/<sub>2</sub>" oval section with 2<sup>1</sup>/<sub>2</sub>" eye. Weight 20 lbs.



### **DB-1238 (TSL part number 1238)**

#### **CAPACITY:**

4,500 lbs. Maximum Vertical (Tongue) Load  
22,000 lbs. Maximum Gross Trailer Weight

NOTE: When used for hinged tongue trailer applications where maximum vertical load cannot exceed 500 lbs., the maximum gross trailer weight is 70,000 lbs.

#### **DESCRIPTION:**

Forged steel bolt-on drawbar with induction hardened wear area. 3" eye with 1<sup>5</sup>/<sub>8</sub>" diameter section. Weight 26 lbs.



### **DB-1235-1 (TSL part number 1235/1)**

#### **CAPACITY:**

7,000 lbs. Maximum Vertical (Tongue) Load  
35,000 lbs. Maximum Gross Trailer Weight

NOTE: When used for hinged tongue trailer applications where maximum vertical load cannot exceed 500 lbs., the maximum gross trailer weight is 80,000 lbs.

#### **DESCRIPTION:**

Forged steel bolt-on drawbar with induction hardened wear area. 3" I.D. eye with 1<sup>5</sup>/<sub>8</sub>" diameter section and 3<sup>1</sup>/<sub>8</sub>" square shank. Weight 42 lbs.

**WARNING: MAINTAIN SUFFICIENT VERTICAL (TONGUE) LOAD TO ADEQUATELY CONTROL THE TRAILER (GENERALLY 10% of G.T.W.) BUT DO NOT EXCEED THE ABOVE RATED CAPACITIES.**

#### **TOWING APPLICATIONS:**

Trailers, full trailers (including doubles) and equipment designed for over-the-road towing within the stated capacities. For off-road applications, reduce the above capacities by 25% and use in conjunction with a swivel type coupling device.

#### MOUNTING:

1. The capacities published for these drawbars are based on an over-tongue mount as shown in Figure A. If mounted under-tongue, as in Figure B, the vertical rating may be increased by 50%. (The hinged tongue rating is not affected by over/under tongue mounting.

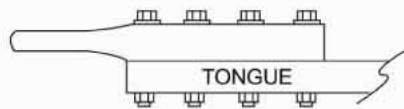


Figure A

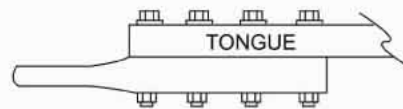


Figure B

2. Use the hole pattern described below.
3. Use 6 (DB-1235-1 or DB-1245-1) or 7 (DB-1228-1 or DB-1238) 5/8" grade 8 bolts and nuts, properly tightened to 109-188 ft-lbs.

#### OPERATION AND MAINTENANCE:

1. Regularly inspect the drawbar for wear and damage. If wear exceeds 1/8", replace the drawbar.
2. Check the mounting fasteners for proper torque.

#### WARNING—DURING OPERATION:

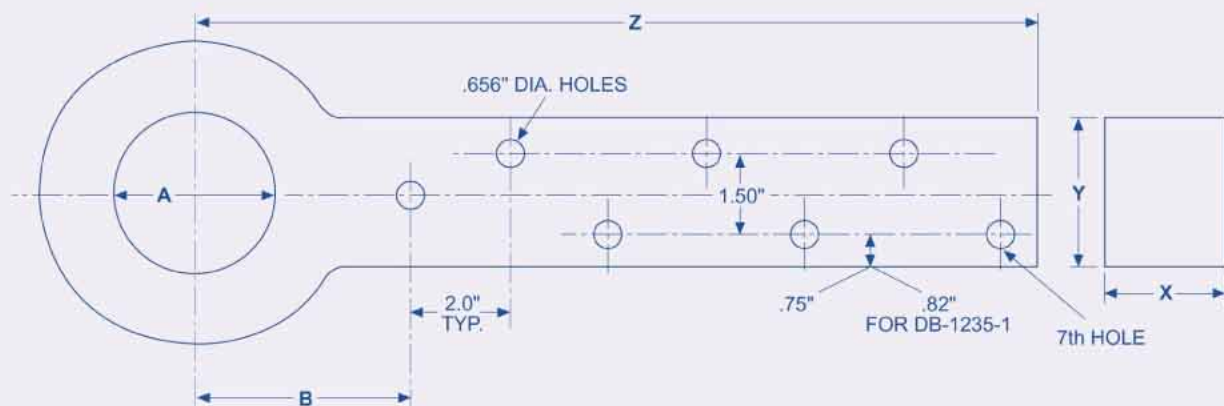
1. **BE SURE THE DRAWBAR SIZE IS COMPATIBLE WITH THE COUPLING DEVICE ON THE TOW VEHICLE.**
2. **DO NOT DAMAGE THE COUPLING COMPONENTS. BE PARTICULARLY CAREFUL DURING COUPLING AND UNCOUPLING.**
3. **INSPECT THE COUPLING DEVICE ON THE TOW VEHICLE FOR PROPER OPERATION. DO NOT USE ANY COUPLING DEVICE THAT DOES NOT OPERATE PROPERLY.**
4. **OTHER STEPS AND INSPECTIONS ARE ALSO REQUIRED. CONSULT OSHA AND D.O.T. REGULATIONS AND AMERICAN TRUCKING ASSOCIATION FOR COMPLETE COUPLING AND UNCOUPLING PROCEDURES. THESE COVER ITEMS SUCH AS CARGO SECUREMENT, BRAKES, LIGHTS, SAFETY CHAINS AND OTHER IMPORTANT REQUIREMENTS.**

#### GENERAL INFORMATION:

1. Do not modify or add to the product.
2. Wear safety goggles during installation and removal.
3. Never strike any part of the item with a steel hammer.
4. Do not weld on this product without written consent from the factory.

#### WARNING: THIS EQUIPMENT MUST NOT BE USED OR MAINTAINED IN A CARELESS MANNER.

These products are covered by Holland's Commercial Products Warranty. Holland reserves the right, without giving prior notice, to change specifications and dimensions as designs are altered or improved.



PART NO.	A	B	NO. OF HOLES	X x Y x Z
DB-1228-1	2.50"	4.50"	7	1.25" x 3" x 17.25"
DB-1238	3.00"	4.50"	7	1.62" x 3" x 17.25"
DB-1235-1	3.00"	6.00"	6	3.12" square x 17.25"
DB-1245-1	2.38"	6.00"	6	3.00" square x 17.25"

Copyright © January 2000 Holland Hitch Company



**TRANSPORT SPECIALTIES LIMITED - An ISO 9001 Certified Distributor - P.O. Box 98 971, S.A.M.C.**  
Cnr Ash & Kerrs Rds, Wiri, Auckland - Phone (09) 980 7300, Fax (09) 980 7341  
E-mail: [mailroom@transpecs.co.nz](mailto:mailroom@transpecs.co.nz) Website: [www.transpecs.co.nz](http://www.transpecs.co.nz)





## DRAWBARS WITH SQUARE MOUNTING BASE DB-1250-15 AND DB-1385



### **DB-1250-15 (TSL part number 1250/15)**

#### **CAPACITY:**

7,000 lbs. Maximum Vertical (Tongue) Load  
35,000 lbs. Maximum Gross Trailer Weight

NOTE: When used for hinged tongue trailer applications where maximum vertical load cannot exceed 500 lbs., the maximum gross trailer weight is 50,000 lbs.

SAE J847 Information: Type I - not applicable. Type II - 35,000 lbs.

#### **DESCRIPTION:**

Forged steel eye welded to a 4-bolt mounting base. 2 1/2" I.D. eye with 1 1/4" x 1 1/2" oval section. Weight 14 lbs.



### **DB-1385 (TSL part number 1385)**

#### **CAPACITY:**

15,000 lbs. Maximum Vertical (Tongue) Load  
60,000 lbs. Maximum Gross Trailer Weight

NOTE: When used for hinged tongue trailer applications where maximum vertical load cannot exceed 500 lbs., the maximum gross trailer weight is 90,000 lbs.

#### **DESCRIPTION:**

Forged steel drawbar with 4-bolt mounting base. 3" I.D. eye with 1 5/8" diameter section. Weight 22 lbs.

**WARNING: MAINTAIN ADEQUATE VERTICAL (TONGUE) LOAD TO ADEQUATELY CONTROL THE TRAILER (GENERALLY 10%) BUT DO NOT EXCEED THE ABOVE RATED CAPACITIES.**

#### **TOWING APPLICATIONS:**

Trailers, full trailers (including doubles) and equipment designed for over-the-road towing within the stated capacities. For off-road applications, reduce the above capacities by 25% and use in conjunction with a swivel type coupling device.

#### **MOUNTING:**

1. Use a mounting structure of sufficient strength to support the rated capacity of the drawbar in accordance with SAE J849 and SAE J847 respectively.
2. Use the hole pattern described on the reverse.
3. Use (4) 5/8" (DB-1250-15) or (4) 3/4" (DB-1385) grade 8 fasteners, properly tightened.

#### **OPERATION AND MAINTENANCE:**

1. Regularly inspect the drawbar for wear and damage. If wear exceeds 1/8" from the original surface profile, replace the drawbar.
2. Check the mounting fasteners for proper torque.

#### **WARNING—DURING OPERATION:**

1. **BE SURE THE DRAWBAR SIZE IS COMPATIBLE WITH THE COUPLING DEVICE ON THE TOW VEHICLE.**
2. **DO NOT DAMAGE THE COUPLING COMPONENTS. BE PARTICULARLY CAREFUL DURING COUPLING AND UNCOUPLING.**
3. **INSPECT THE COUPLING DEVICE ON THE TOW VEHICLE FOR PROPER OPERATION. DO NOT USE ANY COUPLING DEVICE THAT DOES NOT OPERATE PROPERLY.**
4. **OTHER STEPS AND INSPECTIONS ARE ALSO REQUIRED. CONSULT OSHA AND D.O.T. REGULATIONS AND AMERICAN TRUCKING ASSOCIATION FOR COMPLETE COUPLING AND UNCOUPLING PROCEDURES. THESE COVER ITEMS SUCH AS CARGO SECUREMENT, BRAKES, LIGHTS, SAFETY CHAINS AND OTHER IMPORTANT REQUIREMENTS.**

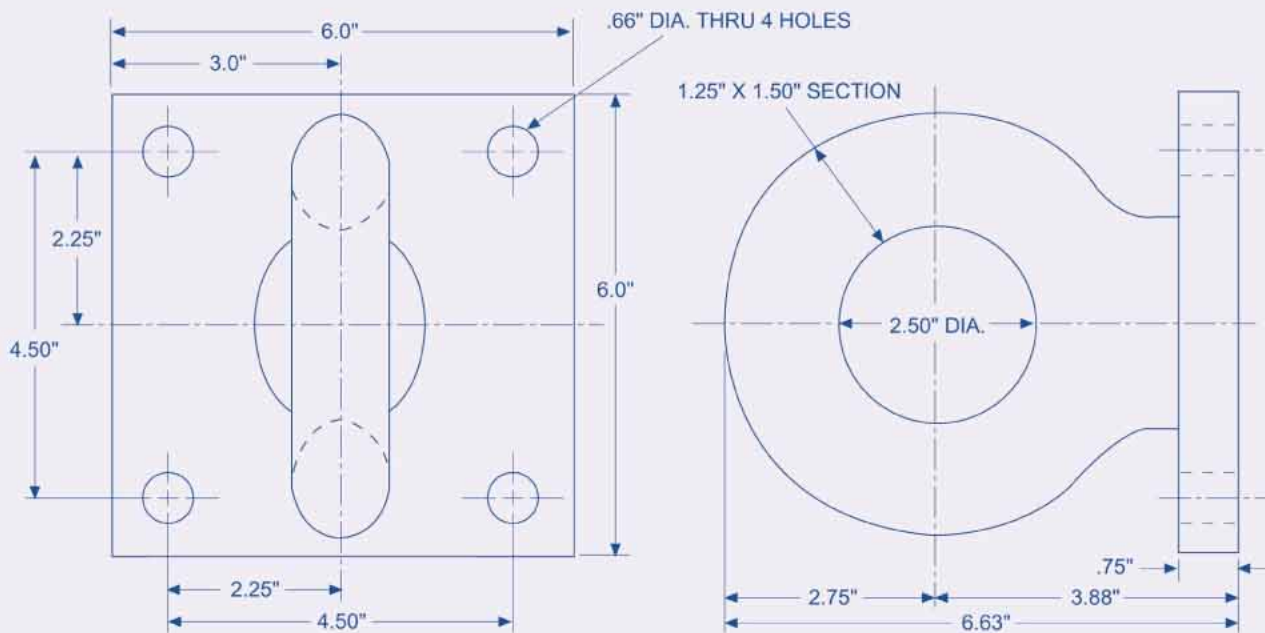
#### **GENERAL INFORMATION:**

1. Do not modify or add to the product.
2. Wear safety goggles during installation and removal.
3. Never strike any part of the item with a steel hammer.

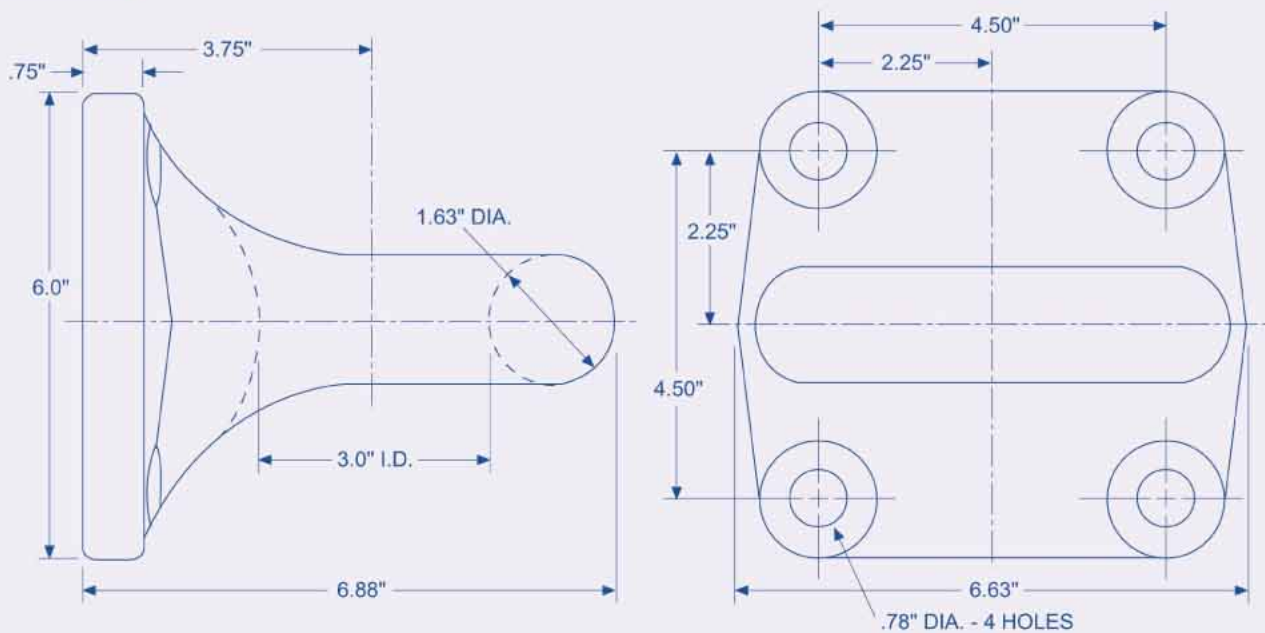
**WARNING: THIS EQUIPMENT MUST NOT BE USED OR MAINTAINED IN A CARELESS MANNER.**

These products are covered by Holland's Commercial Products Warranty. Holland reserves the right, without giving prior notice, to change specifications and dimensions as designs are altered or improved.

# DB-1250-15



# DB-1385



ALL DIMENSIONS SHOWN ARE NOMINAL

Copyright © January 2000 Holland Hitch Company



TRANSPORT SPECIALTIES LIMITED - An ISO 9001 Certified Distributor - P.O. Box 98 971, S.A.M.C.  
Cnr Ash & Kerrs Rds, Wiri, Auckland - Phone (09) 980 7300, Fax (09) 980 7341  
E-mail: [mailroom@transpecs.co.nz](mailto:mailroom@transpecs.co.nz) Website: [www.transpecs.co.nz](http://www.transpecs.co.nz)





# DB-1250-3

TSL Part No. 1250/3

## CAPACITY:

3,000 lbs. Maximum Vertical Load

15,000 lbs. Maximum Gross Trailer Weight

NOTE: When used for hinged tongue trailer applications where maximum vertical load does not exceed 500 lbs., the maximum gross trailer weight is 50,000 lbs.

## DESCRIPTION:

2 1/2" I.D. eye forged steel drawbar with 1 1/2" x 1 1/4" dual section, 1 1/2" O.D. shank with nut, washer and cotter pin. Weight 9 lbs.



**WARNING: MAINTAIN SUFFICIENT VERTICAL (TONGUE) LOAD TO ADEQUATELY CONTROL THE TRAILER (GENERALLY 10% OF G.T.W.) BUT DO NOT EXCEED THE ABOVE RATED CAPACITIES.**

## TOWING APPLICATIONS:

Trailers and equipment designed for over-the-road towing within the stated capacities. For off-road applications, reduce the above capacities by 25%.

## MOUNTING:

1. Use a mounting structure of sufficient strength to support the capacity of the drawbar in accordance with SAE J849 and SAE J847 respectively.
2. Refer to the drawing on the reverse for proper mounting dimensions (dimensions A, B and C). The mounting surface must be chamfered to provide clearance for the shank fillet.
3. To mount the drawbar to the mounting structure, remove cotter pin (XB-121), nut (XB-771) and washer (XB-1252) from drawbar (XA-1250-13). Insert drawbar into mounting structure and install washer and nut on drawbar. Torque the nut to 450-650 ft-lbs. and insert cotter pin through castellation in the nut and hole in the drawbar shank. Spread the cotter pin.

## OPERATION AND MAINTENANCE:

1. Regularly inspect the drawbar for wear and damage. If wear exceeds 1/8" (.125") from the original surface profile, replace the drawbar.
2. Check the mounting nut for proper torque.

## WARNING—DURING OPERATION:

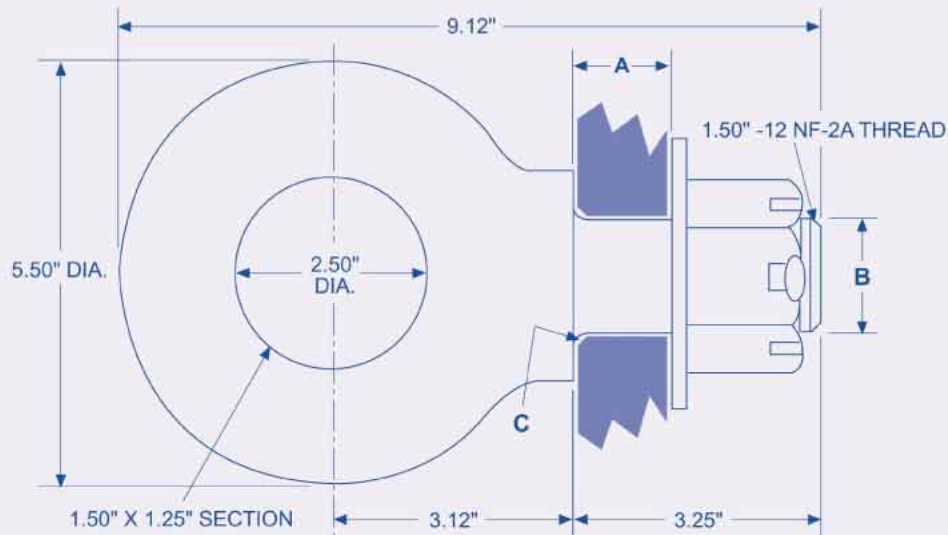
1. **BE SURE THE DRAWBAR SIZE IS COMPATIBLE WITH THE COUPLING DEVICE ON THE TOW VEHICLE.**
2. **DO NOT DAMAGE THE COUPLING COMPONENTS. BE PARTICULARLY CAREFUL DURING COUPLING AND UNCOUPLING.**
3. **INSPECT THE COUPLING DEVICE ON THE TOW VEHICLE FOR PROPER OPERATION. DO NOT USE ANY COUPLING DEVICE THAT DOES NOT OPERATE PROPERLY.**
4. **OTHER STEPS AND INSPECTIONS ARE ALSO REQUIRED. CONSULT OSHA AND D.O.T. REGULATIONS AND AMERICAN TRUCKING ASSOCIATION FOR COMPLETE COUPLING AND UNCOUPLING PROCEDURES. THESE COVER ITEMS SUCH AS CARGO SECUREMENT, BRAKES, LIGHTS, SAFETY CHAINS, AND OTHER IMPORTANT REQUIREMENTS.**

## GENERAL INFORMATION:

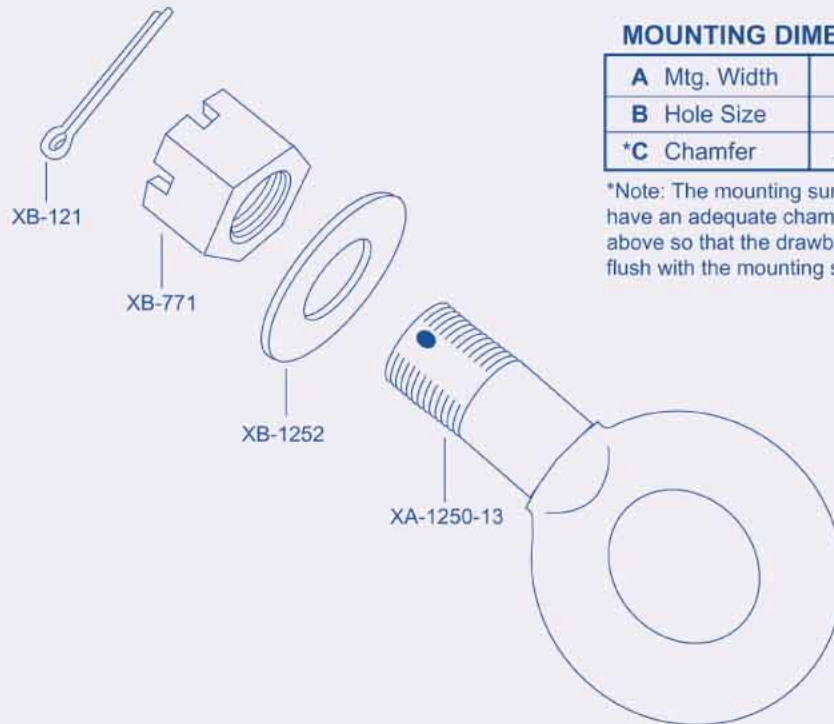
1. Do not modify or add to the product.
2. Wear safety goggles during installation and removal.
3. Never strike any part of the item with a steel hammer.
4. Do not weld on this product without written consent from the factory.

**WARNING: THIS EQUIPMENT MUST NOT BE USED OR MAINTAINED IN A CARELESS MANNER.**

This product is covered by Holland's Commercial Products Warranty. Holland reserves the right, without giving prior notice, to change specifications and dimensions as designs are altered or improved.



ALL DIMENSIONS SHOWN ARE NOMINAL



#### MOUNTING DIMENSIONS

A Mtg. Width	1.50"
B Hole Size	1.53"
*C Chamfer	.19" x 45°

\*Note: The mounting surface must have an adequate chamfer as shown above so that the drawbar mounts flush with the mounting surface.

Copyright © January 2000 Holland Hitch Company



TRANSPORT SPECIALTIES LIMITED - An ISO 9001 Certified Distributor - P.O. Box 98 971, S.A.M.C.  
Cnr Ash & Kerrs Rds, Wiri, Auckland - Phone (09) 980 7300, Fax (09) 980 7341  
E-mail: [mailroom@transpecs.co.nz](mailto:mailroom@transpecs.co.nz) Website: [www.transpecs.co.nz](http://www.transpecs.co.nz)





# DB-1249-2H

TSL Part no. 1249/2H

#### CAPACITY:

9,000 lbs. Maximum Vertical Load

45,000 lbs. Maximum Gross Trailer Weight

NOTE: When used for hinged tongue trailer applications where maximum vertical load cannot exceed 500 lbs., the maximum gross trailer weight is 85,000 lbs.

#### DESCRIPTION:

3" I.D. eye forged steel drawbar with induction hardened wear area. 1<sup>5</sup>/<sub>8</sub>" diameter section with 2" O.D. shank and washer, nut and cotter pin. Weight 14 lbs.



**WARNING: MAINTAIN SUFFICIENT VERTICAL (TONGUE) LOAD TO ADEQUATELY CONTROL THE TRAILER (GENERALLY 10% OF G.T.W.) BUT DO NOT EXCEED THE ABOVE RATED CAPACITIES.**

#### TOWING APPLICATIONS:

Trailers, full trailers (including doubles) and equipment designed for over-the-road towing within the stated capacities. For off-road applications, reduce the above capacities by 25%.

#### MOUNTING:

1. Use a mounting structure of sufficient strength to support the rated capacity of the drawbar in accordance with SAE J849 and SAE J847 respectively.
2. Refer to the drawing on the reverse for proper mounting dimensions (dimensions A, B, and C).  
Note: Mounting surface must have an adequate chamfer to clear the drawbar shank fillet so that the drawbar is flush with its mounting surface (see detail on reverse).
3. To mount drawbar to mounting structure, remove cotter pin (XB-121), nut (XB-T-316-A) and washer (XB-T-318) from drawbar (XA-1249-2H-10). Insert drawbar into mounting structure and install washer and nut on drawbar. Torque the nut to 450-650 ft-lbs. and insert cotter pin through castellation in the nut and hole in the drawbar shank. Spread cotter pin.

#### OPERATION AND MAINTENANCE:

1. Regularly inspect the drawbar for wear and damage. If wear exceeds 1/8" (.125") from the original surface profile, replace the drawbar.
3. Check the mounting nut for proper torque.

#### WARNING—DURING OPERATION:

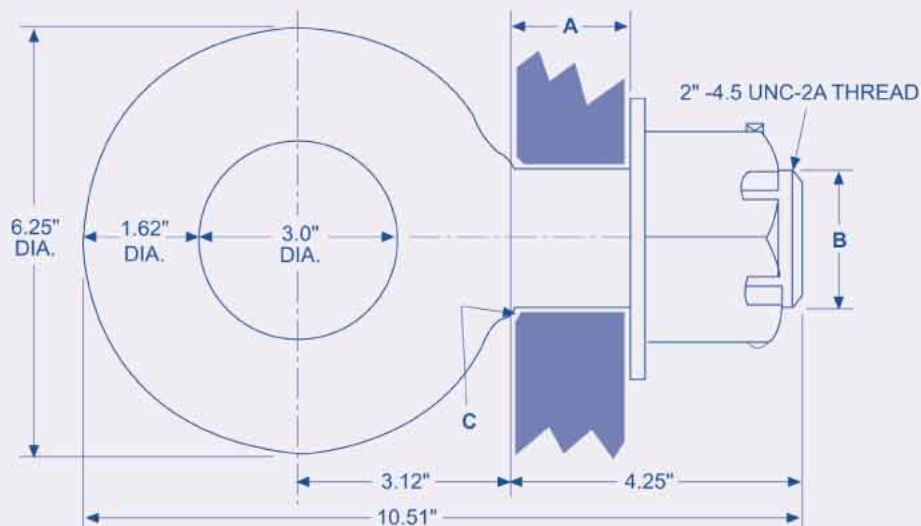
1. **BE SURE THE DRAWBAR SIZE IS COMPATIBLE WITH THE COUPLING DEVICE ON THE TOW VEHICLE.**
2. **DO NOT DAMAGE THE COUPLING COMPONENTS. BE PARTICULARLY CAREFUL DURING COUPLING AND UNCOUPLING.**
3. **INSPECT THE COUPLING DEVICE ON THE TOW VEHICLE FOR PROPER OPERATION. DO NOT USE ANY COUPLING DEVICE THAT DOES NOT OPERATE PROPERLY.**
4. **OTHER STEPS AND INSPECTIONS ARE ALSO REQUIRED. CONSULT OSHA AND D.O.T. REGULATIONS AND AMERICAN TRUCKING ASSOCIATION FOR COMPLETE COUPLING AND UNCOUPLING PROCEDURES. THESE COVER ITEMS SUCH AS CARGO SECUREMENT, BRAKES, LIGHTS, SAFETY CHAINS, AND OTHER IMPORTANT REQUIREMENTS.**

#### GENERAL INFORMATION:

1. Do not modify or add to the product.
2. Wear safety goggles during installation and removal.
3. Never strike any part of the item with a steel hammer.
4. Do not weld on this product, other than as directed for installation, without written consent from the factory.

**WARNING: THIS EQUIPMENT MUST NOT BE USED OR MAINTAINED IN A CARELESS MANNER.**

This product is covered by Holland's Commercial Products Warranty. Holland reserves the right, without giving prior notice, to change specifications and dimensions as designs are altered or improved.

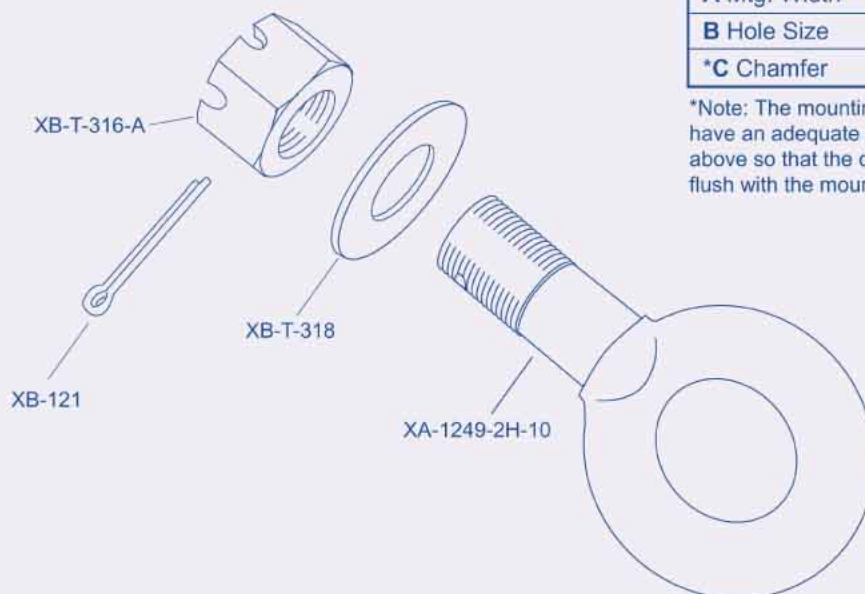


ALL DIMENSIONS SHOWN ARE NOMINAL

#### MOUNTING DIMENSIONS

<b>A</b> Mtg. Width	1.75"
<b>B</b> Hole Size	2.03"
<b>*C</b> Chamfer	.15" x 45°

\*Note: The mounting surface must have an adequate chamfer as shown above so that the drawbar mounts flush with the mounting surface.



Copyright © January 2000 Holland Hitch Company



**TRANSPORT SPECIALTIES LIMITED - An ISO 9001 Certified Distributor - P.O. Box 98 971, S.A.M.C.**  
**Cnr Ash & Kerrs Rds, Wiri, Auckland - Phone (09) 980 7300, Fax (09) 980 7341**  
**E-mail: [mailroom@transpecs.co.nz](mailto:mailroom@transpecs.co.nz) Website: [www.transpecs.co.nz](http://www.transpecs.co.nz)**





# DB-1249-49

TSL Part No. 1249/49

## CAPACITY:

9,000 lbs. Maximum Vertical (Tongue) Load  
45,000 lbs. Maximum Gross Trailer Weight  
When used for hinged tongue trailer applications where maximum vertical load cannot exceed 500 lbs., the maximum gross trailer weight is 85,000 lbs.

## DESCRIPTION:

3" I.D. eye forged steel drawbar with induction hardened wear area. 1.62" diameter section, 2" O.D. shank with nut, washer, and cotter pin. Weight 24 lbs.



**WARNING: MAINTAIN ADEQUATE VERTICAL (TONGUE) LOAD TO ADEQUATELY CONTROL THE TRAILER (GENERALLY 10% OF G.T.W.) BUT DO NOT EXCEED THE ABOVE RATED CAPACITIES.**

## TOWING APPLICATIONS:

Trailers, full trailers (including doubles) and equipment designed for over-the-road towing within the stated capacities. For off-road applications, reduce the above capacities by 25%.

## MOUNTING:

1. Use a mounting structure of sufficient strength to support the rated capacity of the drawbar in accordance with SAE J849 and SAE J847 respectively.
2. Refer to the drawing on the reverse for proper mounting dimensions (dimensions A, B and C).
3. To mount drawbar to mounting structure, remove cotter pin (XB-121), nut (XB-T-316-A) and washer (XB-T-318) from drawbar (XA-1249-49-10). Insert drawbar into mounting structure and install washer and nut on the drawbar. Torque the nut to 450-650 ft-lbs. and insert cotter pin through castellation in the nut and hole in the drawbar shank. Spread cotter pin.

## OPERATION AND MAINTENANCE:

1. Regularly inspect the drawbar for wear and damage. If wear exceeds .125" from the original surface profile, replace the drawbar.
2. Check the drawbar nut for proper torque.

## WARNING—DURING OPERATION:

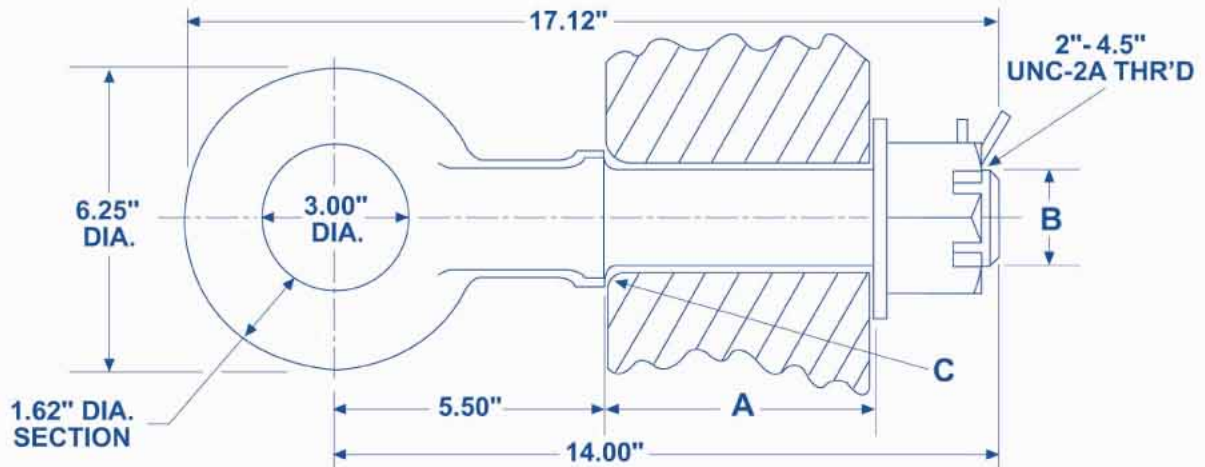
1. **BE SURE THE DRAWBAR SIZE IS COMPATIBLE WITH THE COUPLING DEVICE ON THE TOW VEHICLE.**
2. **DO NOT DAMAGE THE COUPLING COMPONENTS. BE PARTICULARLY CAREFUL DURING COUPLING AND UNCOUPLING.**
3. **INSPECT THE COUPLING DEVICE ON THE TOW VEHICLE FOR PROPER OPERATION. DO NOT USE ANY COUPLING DEVICE THAT DOES NOT OPERATE PROPERLY.**
4. **OTHER STEPS AND INSPECTIONS ARE ALSO REQUIRED. CONSULT OSHA AND D.O.T. REGULATIONS AND AMERICAN TRUCKING ASSOCIATION FOR COMPLETE COUPLING AND UNCOUPLING PROCEDURES. THESE COVER ITEMS SUCH AS CARGO SECUREMENT, BRAKES, LIGHTS, SAFETY CHAINS, AND OTHER IMPORTANT REQUIREMENTS.**

## GENERAL INFORMATION:

1. Do not modify or add to the product.
2. Wear safety goggles during installation and removal.
3. Never strike any part of the item with a steel hammer.
4. Do not weld on this product without written consent from the factory.

**WARNING: THIS EQUIPMENT MUST NOT BE USED OR MAINTAINED IN A CARELESS MANNER.**

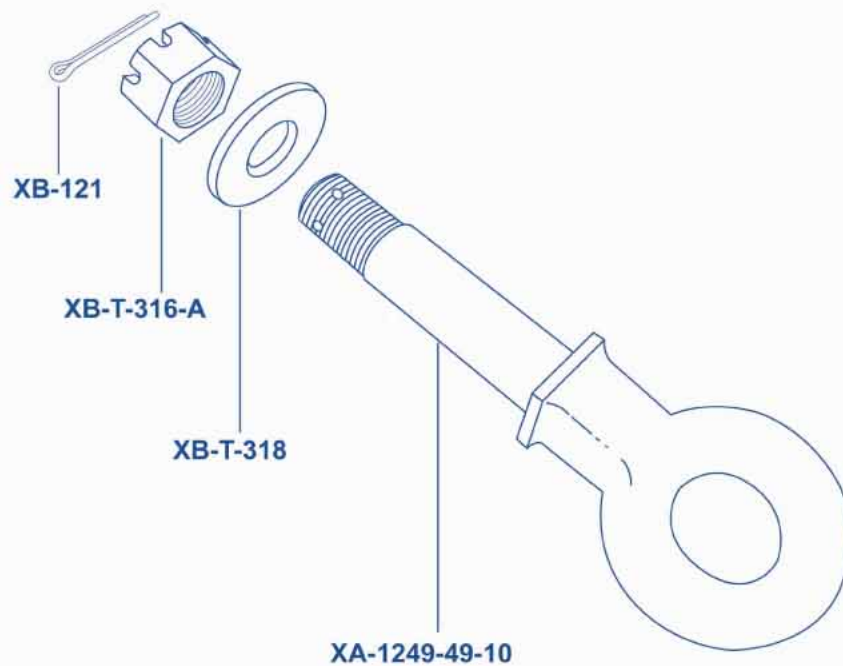
This product is covered by Holland's Commercial Products Warranty. Holland reserves the right, without giving prior notice, to change specifications and dimensions as designs are altered or improved.



MOUNTING DIMENSIONS

A Mtg. Width	6"
B Hole Size	2.03"
C Chamfer	.38" x 45°

ALL DIMENSIONS SHOWN ARE NOMINAL



Copyright © January 2000 Holland Hitch Company



TRANSPORT SPECIALTIES LIMITED - An ISO 9001 Certified Distributor - P.O. Box 98 971, S.A.M.C.  
Cnr Ash & Kerrs Rds, Wiri, Auckland - Phone (09) 980 7300, Fax (09) 980 7341  
E-mail: [mailroom@transpecs.co.nz](mailto:mailroom@transpecs.co.nz) Website: [www.transpecs.co.nz](http://www.transpecs.co.nz)