

NEW CS SERIES

Lighter Increased Payloads

Faster Faster Tipping Speeds

Stronger Increased Lift & Side Load Capacity

Edbro
SETTING THE INDUSTRY STANDARD

Transpecs
QUALITY ON THE MOVE

PRE 2010 CS Series - Lifting Brackets & Mounting Feet

Content:	Page:
EDBRO NEW CS SERIES HOISTS FEATURES & BENEFITS	2-01
INSTALL 01 - CS SERIES INSTALLATION CHECKLIST	2-03
- CS SERIES EYE TYPE INSTALLATION GUIDE	2-04
INSTALL 02 - CS SERIES INSTALLATION CHECKLIST	2-05
OIL 01 - OIL SPECIFICATION GUIDE	2-06
BRKT01_A - LIFTING BRACKET OPTIONS	2-08
BRKT01_B - TOW EYE BRACKET OPTIONS	2-09
BRKT02 - FOOT MOUNTING BRACKETS	2-10
BRKT02 - FOOT MOUNTING BRACKETS	2-12

Edbro New CS Series Hoists

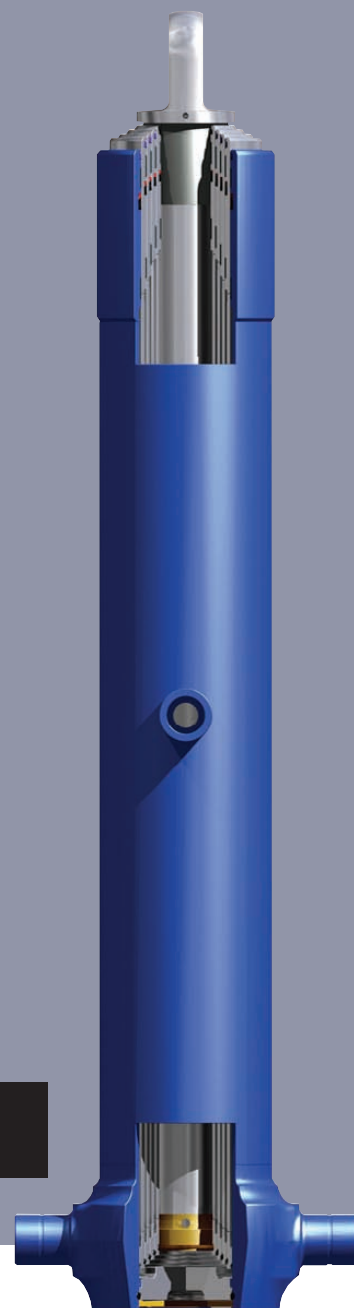
Part Number:	Description:	Page:
NCS 130E346	RAM 3 STAGE New CS	2-13
NCS 130E384	RAM 4 STAGE New CS	2-14
NCS 130E424	RAM 4 STAGE New CS	2-15
NCS 130E464	RAM 4 STAGE New CS	2-16
NCS 130E504	RAM 4 STAGE New CS	2-17
NCS 130E544	RAM 4 STAGE New CS	2-18
NCS 150E477	RAM 5 STAGE New CS	2-19
NCS 150E540	RAM 4 STAGE New CS	2-20
NCS 150E577	RAM 5 STAGE New CS	2-21
NCS 170E573	RAM 5 STAGE New CS	2-22
NCS 170E673	RAM 5 STAGE New CS	2-23
NCS 180E823	RAM 5 STAGE New CS	2-24

Part Number:	Description:	Page:
NCS 130O407	RAM 5 STAGE New CS	2-25
NCS 130O457	RAM 5 STAGE New CS	2-26
NCS 130O464	RAM 4 STAGE New CS	2-27
NCS 130O504	RAM 4 STAGE New CS	2-28
NCS 130O544	RAM 4 STAGE New CS	2-29
NCS 150O540	RAM 4 STAGE New CS	2-30
NCS 150O652	RAM 5 STAGE New CS	2-31
NCS 170O673	RAM 5 STAGE New CS	2-32



PROFIT POWER.

NEW EDBRO CS SERIES HOISTS



Lighter Increased Payloads

Faster Faster Tipping Speeds

Stronger Increased Lift & Side Load Capacity

Edbro
SETTING THE INDUSTRY STANDARD

World Leading Since 1916.



48 Parts Support Locations



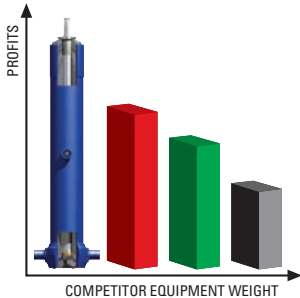
National Transpecs Sales &
Product Support Team



World Leading Brands
Proven in New Zealand

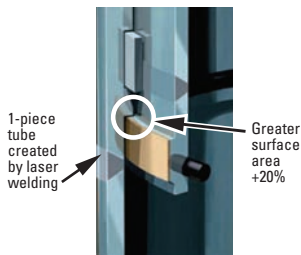
Transpecs
QUALITY ON THE MOVE

Benefits



Lighter Increased Payloads

The world's lightest tipping cylinders providing increased payload and so increased operating profits.



Faster Faster Tipping Speeds

One-piece tube construction and increased tube contact faces allow faster tipping speeds.

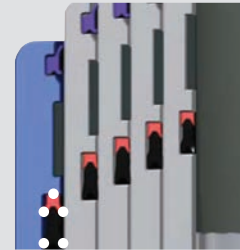


Stronger Increased Lift & Side Load Capacity

Advanced design and production engineering techniques, including laser welding, provide increased lift capacity and side load resistance. Base tube head section increased by as much as 53%.



Features



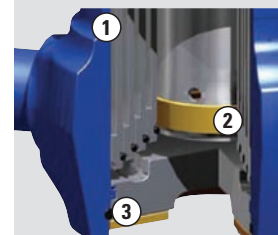
Double lip wiper seal ensures efficient lubrication of each tube and prevents contamination of the cylinder.

Unique 5 point sealing system reduced friction for years of smooth, trouble-free operation.



Wear rings from non-metallic acetal material provide low friction and long service life.

One-piece tubes with large stop contact faces provide optimum durability for long life and reduced maintenance.



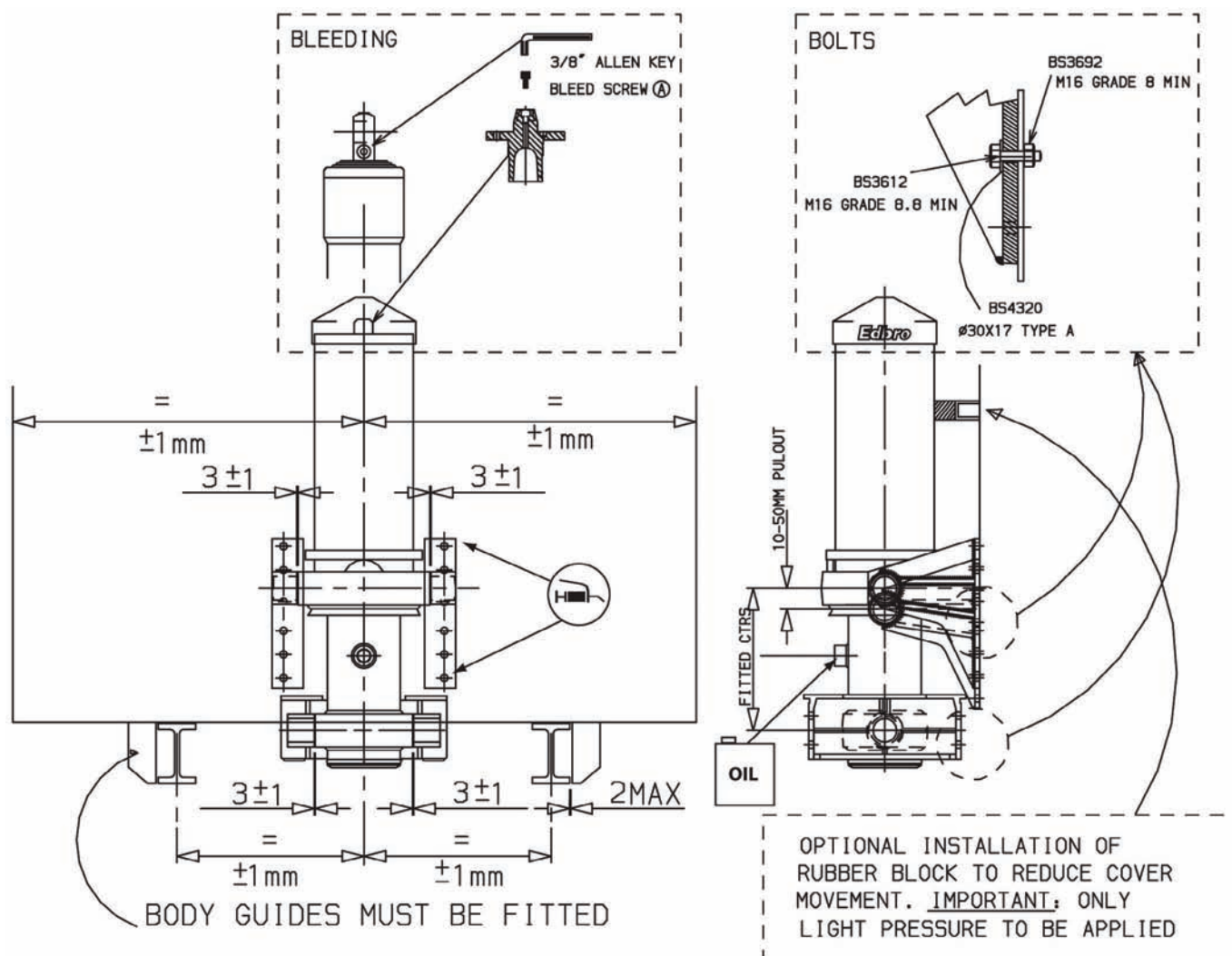
1. Friction welded tube assembly increases strength and fatigue life.
2. Brass slider reduces risk of soaring and damage due to side load.
3. Unique clip and seal arrangement provide long life and ensures easy servicing.

Edbro
SETTING THE INDUSTRY STANDARD



World Leading Brands
Proven in New Zealand





Pressure (Refer to cylinder serial number plate)

MODEL:

SERIAL No:

MAXIMUM-PRESSURE-WORKING
- (BAR) -

Edbro
www.edbro.co.uk

Set pressure relief valve to working pressure (1).

Cylinder Bleeding Procedure

- * Lift body approx 300 mm
- * Loosen bleed screw (A)
- * **Take care!** Body will lower
- * Allow air to escape
- * Tighten when oil flows
- * Lift body to full tip
- * Lower & repeat

Recommended Torques

	Grade 8.8	Grade 10.9
M10	56Nm	77Nm
M12	98Nm	134Nm
M16	240Nm	332Nm

Retorque all bolts monthly

Oil/Grease

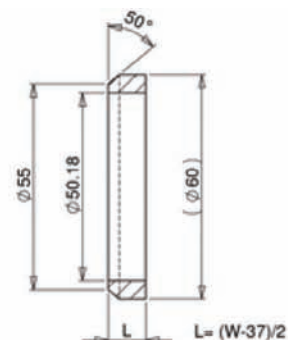
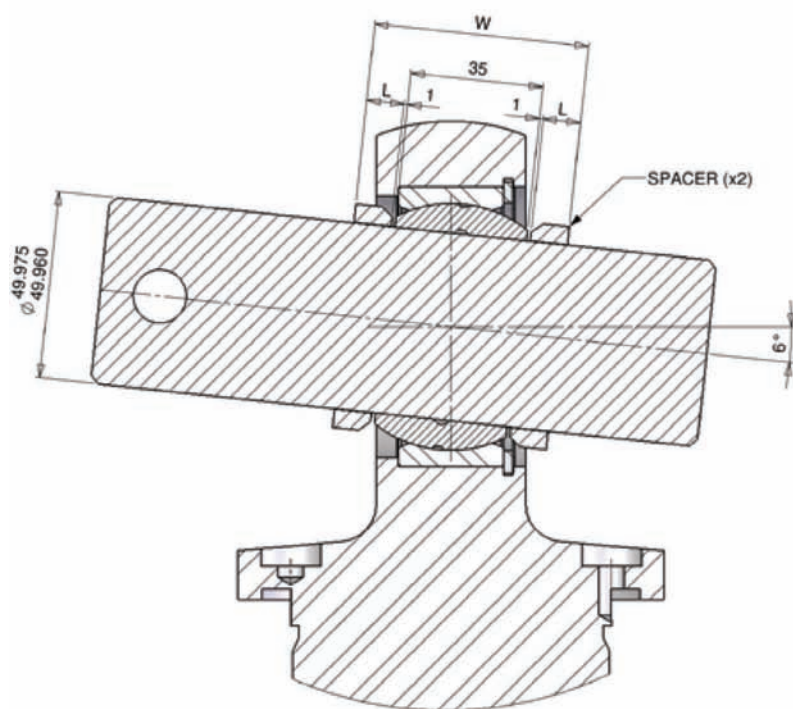


Oil Port

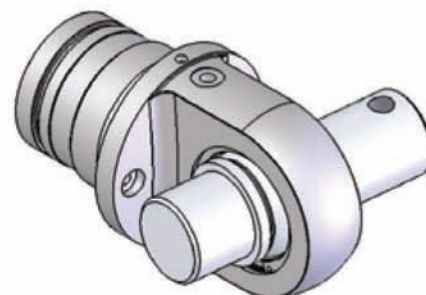


Grease (1/8" BSP)

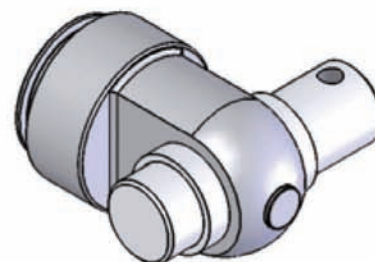
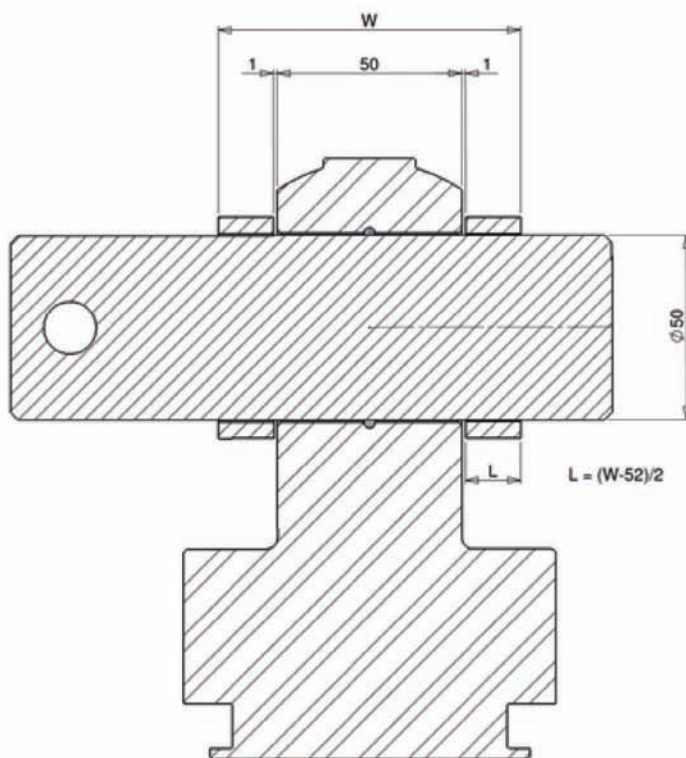
See oil specification OIL01

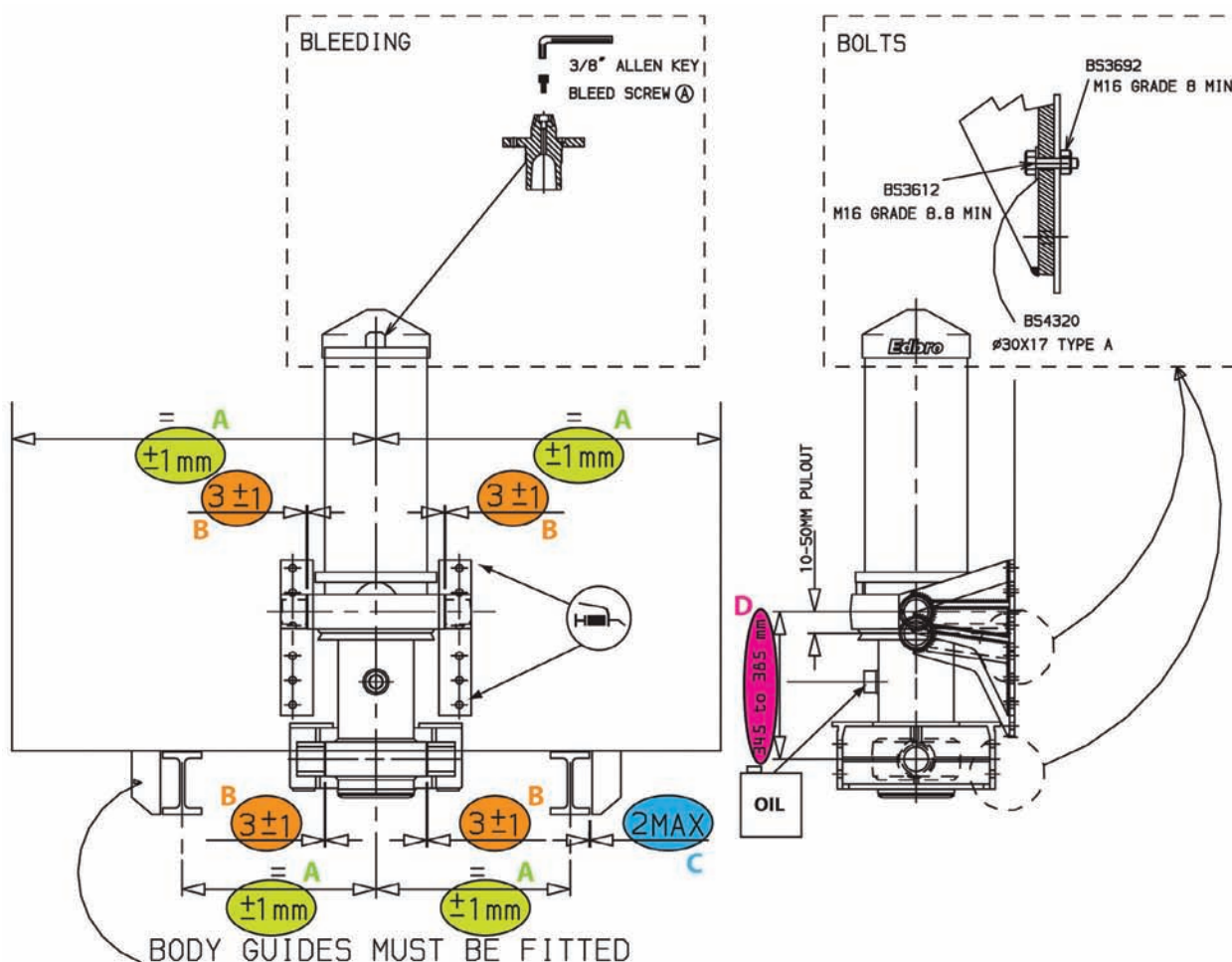


SPACER DETAIL
SCALE 1:1



WHERE W = BRACKET WIDTH





INSTALLATION CHECK LIST

- A.** Check cylinder alignment
- B.** Check bracket clearances
- C.** Check body guide clearances
- D.** Check cylinder mounting pin centres



- E.** Check bolt torques
- F.** Confirm no oil leaks
- G.** Air bleeding done



Cylinder Bleeding Procedure

- * Lift body approx 300 mm
- * Loosen bleed screw (A)
- ⚠ Take care!** Body will lower
- * Allow air to escape
- * Tighten when oil flows
- * Lift body to full tip
- * Lower & repeat

Recommended Torques

	Grade 8.8	Grade 10.9
M10	56Nm	77Nm
M12	98Nm	134Nm
M16	240Nm	332Nm

Retorque all bolts monthly

Oil/Grease



Oil Port



Grease (1/8" BSP)

See oil specification OIL01

Oils specified to suit environmental temperature conditions. Use the colour coding below to identify the recommend manufacturer oil.

Environmental conditions	Extreme Cold	Cold	Winter to Summer	Hot	Very Hot
	To -40°C	-5 to -25°C	-5 to 30°C	30 to 50°C	Over 50°C
ISO grade	N/A	15	32	46	68

MINERAL OIL

To be specified according to ISO 6743/4 HLP-HM or DIN 51524 (part 2) with ISO viscosity grade according to the chart above.

Mineral Oil							
		Oil Specification					Grease Specification
Manufacturer	Mobil	Aero HFA	DTE11M	DTE24	DTE25	DTE26	XHP222
	Shell	AeroShell 4	Tellus T15	Tellus 32	Tellus 46	Tellus 68	Retinax EP
	BP	Not available	Bartran HV15	Bartran HV32	Bartran HV46	Bartran HV68	Energrease LS EP2
	Gulf	Not available	Hydrasil 10	Hydrasil 32	Hydrasil 46	Hydrasil 68	Gulfcrown EP no2

ENVIRONMENTALLY FRIENDLY OIL

To be specified according to ISO 15380 type HEES with equivalent specification to the mineral oils above.

Environmentally Friendly Oil							
		Oil Specification					Grease Specification
Manufacturer	Mobil	Not available	Not available	EAL 32	EAL 46	Not available	EAL 102
	Shell	Not available	HF – E 15	HF – E 32	HF – E 46	HF – E 68	Naturelle EP2
	BP	Not available	Not available	Biohyd SE-S 32	Biohyd SE-S 46	Biohyd SE-S 68	Biotac EP 2
	Gulf	Not available	Not available	Biosynth VG 32	Biosynth VG 46	Not available	Biocal 2

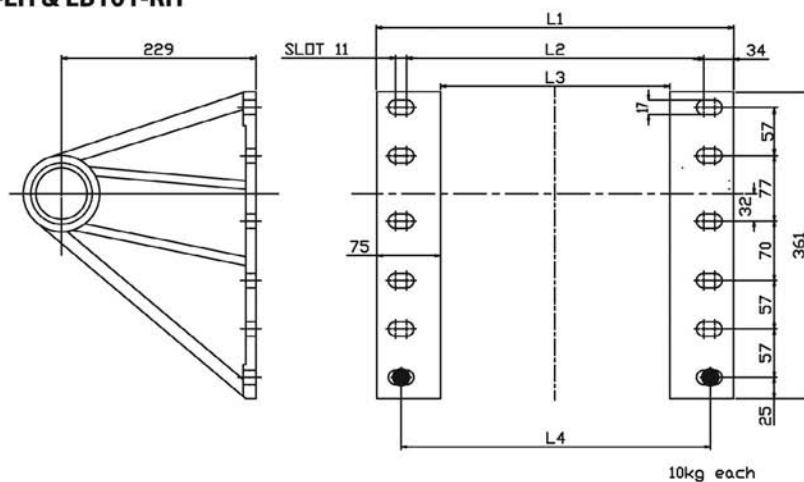
Notes:

1. Maximum running (under load) viscosity is 700 Cst
2. Minimum running (under load) viscosity is 10 Cst (efficiency may be reduced)
3. Oil cleanliness must to maintained to ISO 4406 class 19/16
4. It is recommended that oil should be replaced annually

Technical specifications are subject to change without notice.

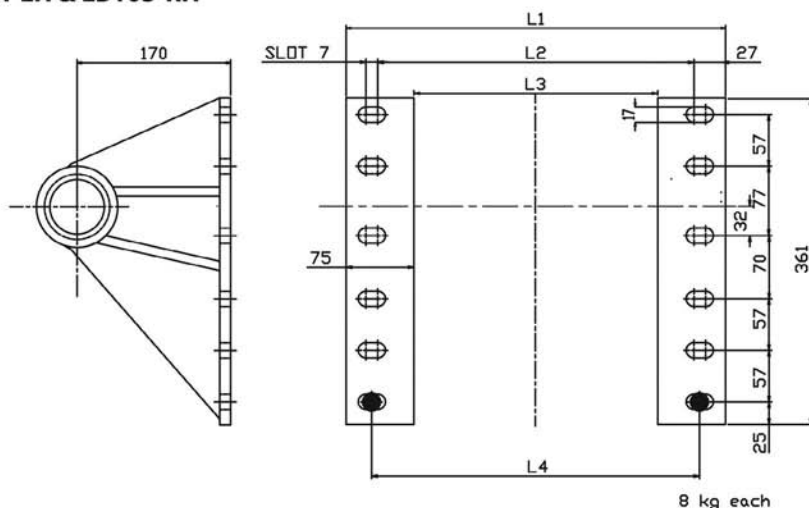
LB100-LH & LB101-RH

For use with outer cover cylinders (00 type)



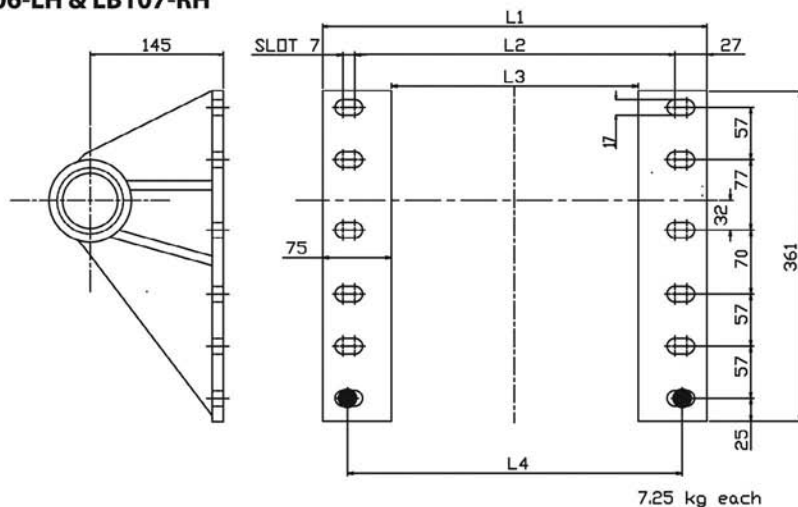
	CS15	CS17/18
L1	456	468
L2	388	400
L3	306	318
L4	388	400

LB104-LH & LB105-RH



	CS15	CS17/18
L1	442	454
L2	388	400
L3	292	304
L4	388	400

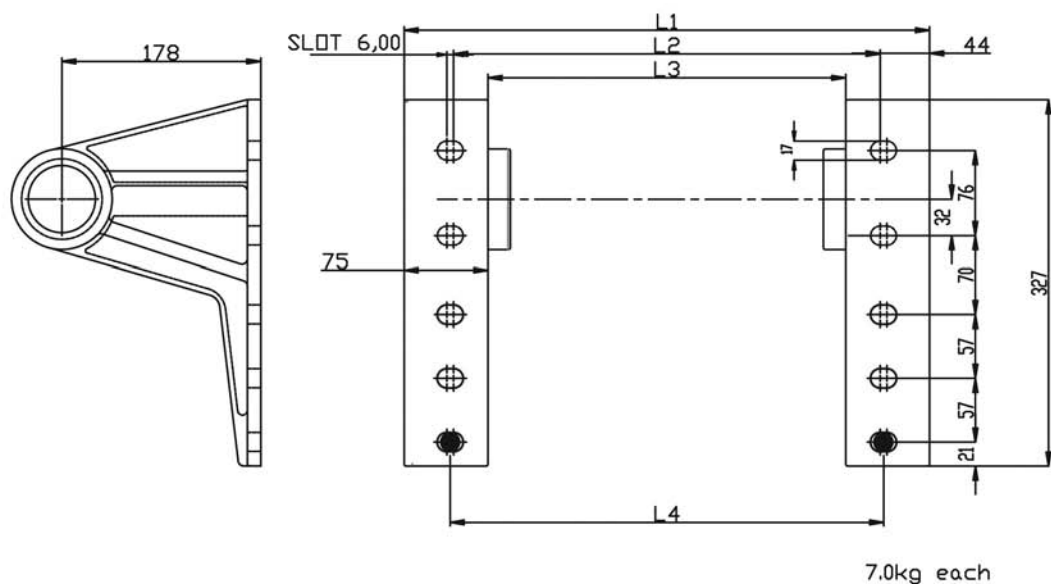
LB106-LH & LB107-RH



	CS15	CS17/18
L1	442	454
L2	388	400
L3	292	304
L4	388	400

All dimensions are given in mm unless otherwise stated. Technical specifications are subject to change without notice.

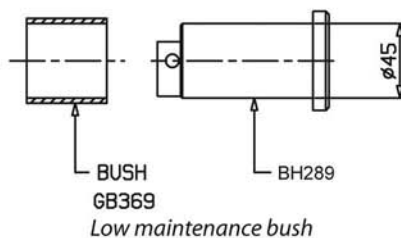
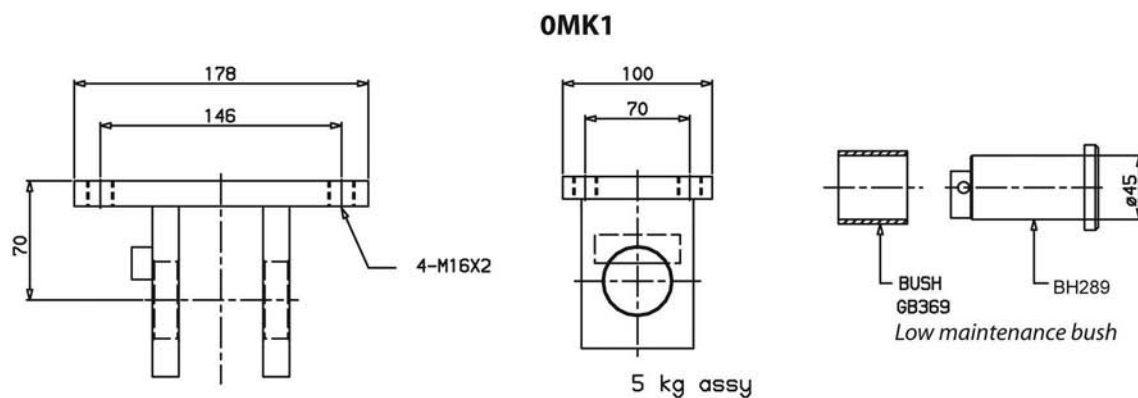
LB108-LH & LB109-RH



All dimensions are given in mm unless otherwise stated. Technical specifications are subject to change without notice.

PLAIN EYE INC BUSH

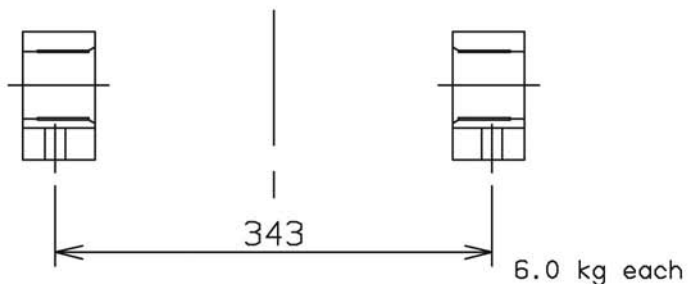
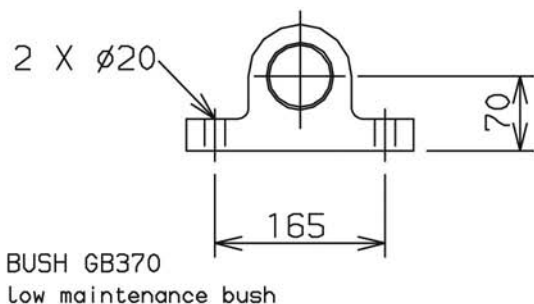
For use with all OE types



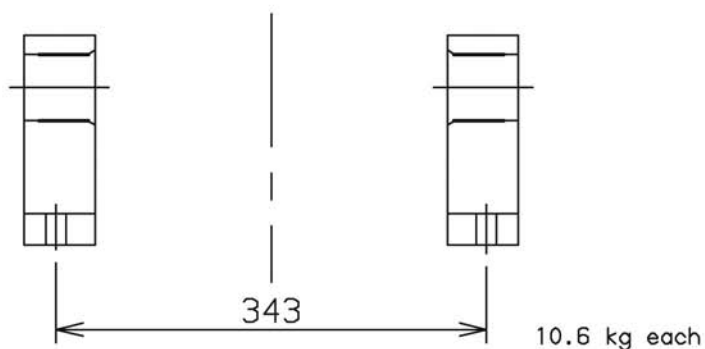
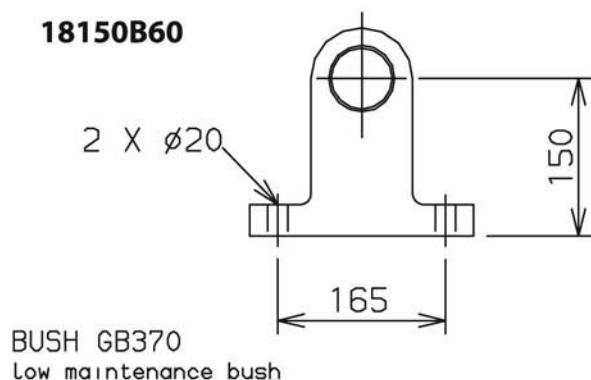
All dimensions are given in mm unless otherwise stated. Technical specifications are subject to change without notice.

CS17 & CS18 cylinders

18070B60



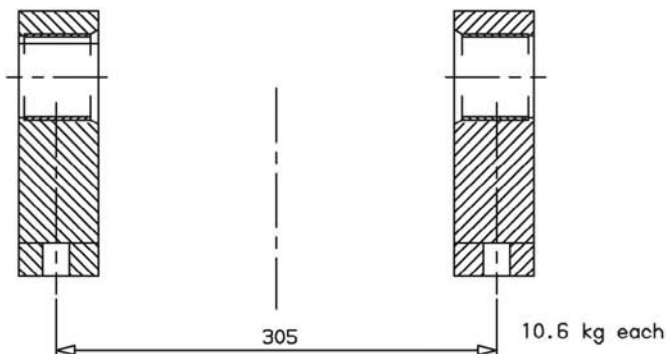
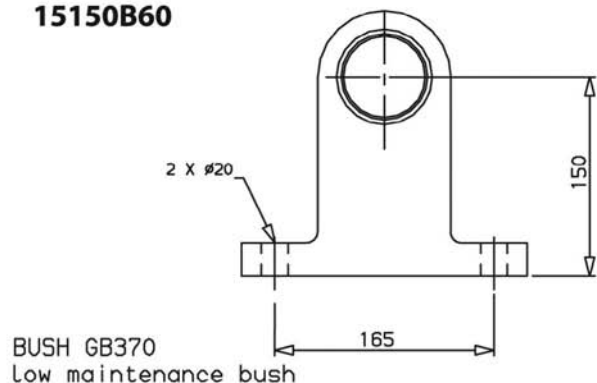
18150B60



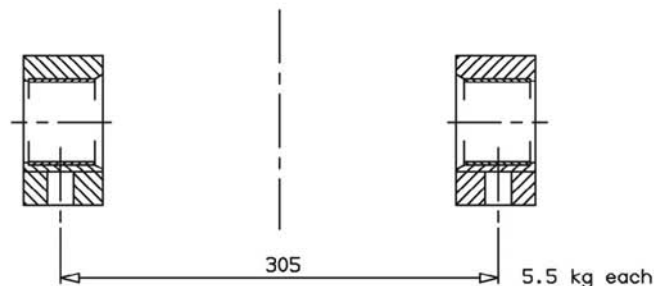
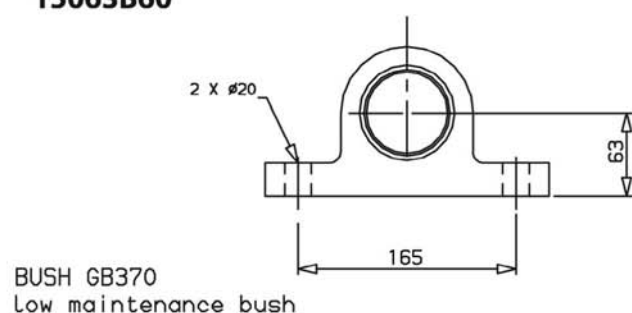
All dimensions are given in mm unless otherwise stated. Technical specifications are subject to change without notice.

CS15 cylinders

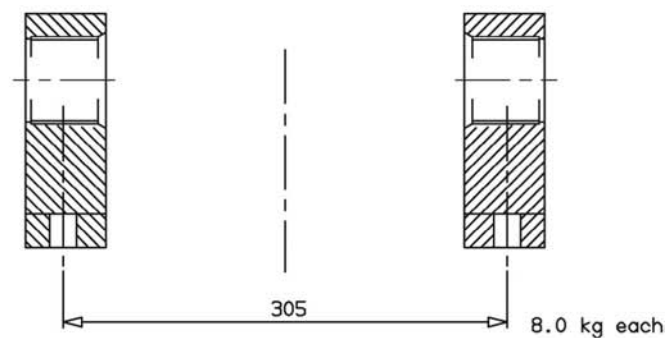
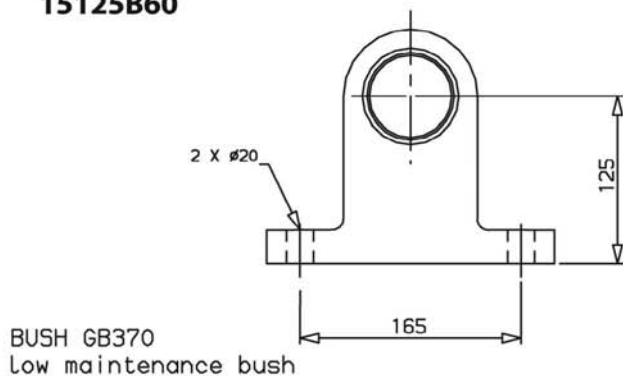
15150B60



15063B60



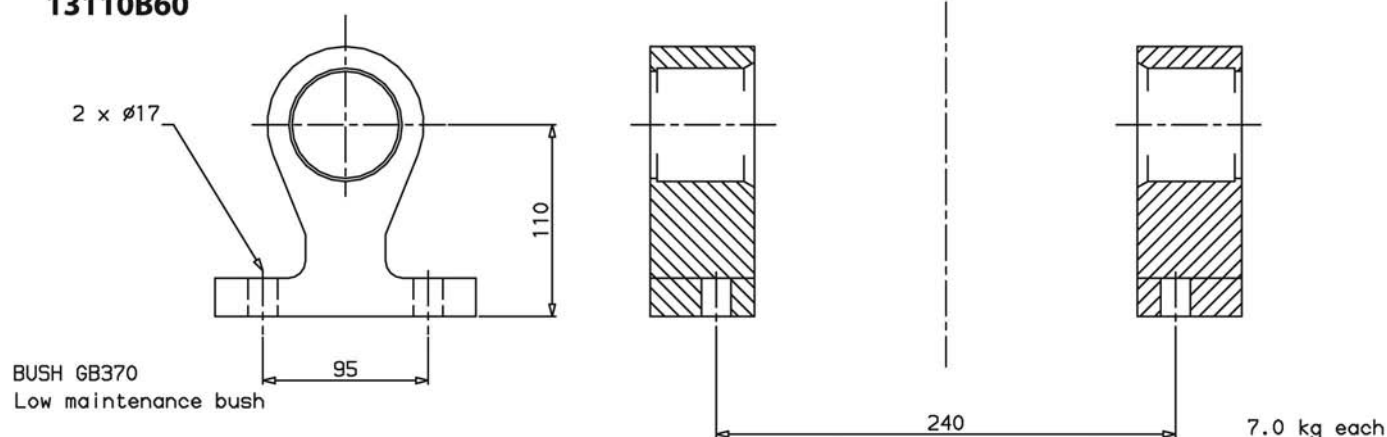
15125B60



All dimensions are given in mm unless otherwise stated. Technical specifications are subject to change without notice.

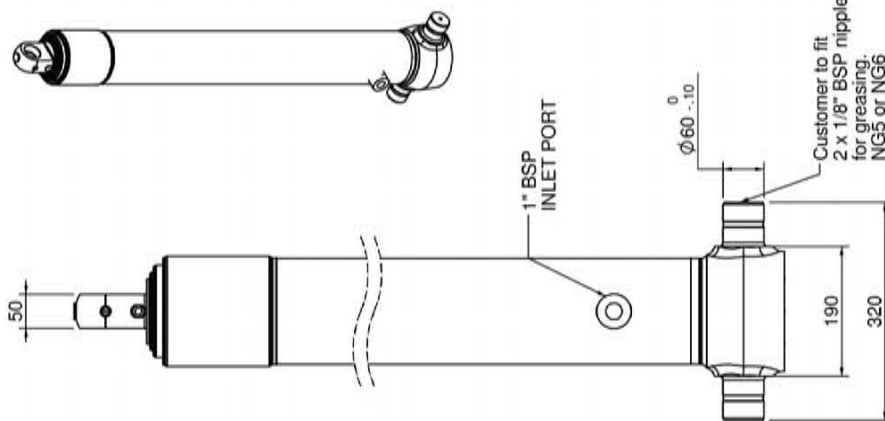
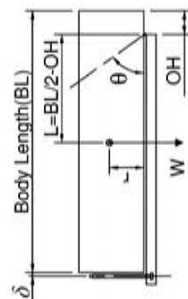
CS13 cylinders

13110B60



All dimensions are given in mm unless otherwise stated. Technical specifications are subject to change without notice.

NCS130E346


$$\underline{d = 0 : r = 750}$$


For guidance only;

For guidance only,
Higher Rated Pressures may be possible. To check your application,
email Edbro plc at <applications@edbro.co.uk>

- If hydraulic pressure is used to limit overloading, the system relief valve must be set to the Rated Pressure unless agreed otherwise by Edbro
- The system relief valve can be set to Maximum Pressure if the load is limited by other means. See RATINGS page for advice
- This cylinder is for lifting purposes only and sideload conditions must be avoided
- Cylinder is painted in primer paint to RAL5013
- See bracket options page BRKT01, BRKT02
- See installation instructions INSTALL01
- Use oil according to specification OIL01

***Include 9mm Pull Out
All Stages Chrome Plated**

Technical Specifications are subject to change without notice
Date Created/Updated: 22 December 2009 14:36:33
Refer www.edbro.com to confirm latest specification
All dimensions are in 'mm', unless otherwise stated

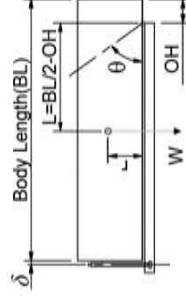
Cylinder 4 stage front end with plain eye

NCS130E384

SPECIFICATION		RATED CAPACITY : 25-42 TONNES***		
Stage	Diameter	Length	Stroke	Swept Volume
-	-	-	-	-
-	-	-	-	-
0	155	1175	-	-
1	136	1140	938	14
2	117	1140	962	10
3	98	1140	967	7
4	79	1140	972	5
Final stroke reduced by		Total (+5/-10)	3839	36
Cylinder Mass (Kg)		Priming Volume	10.7	
Rated Pressure (Bar)		Total Volume (Litres)	46.7	
Maximum Pressure (Bar)		Max. first stage thrust	200 KN	

***TIPPING CAPACITY AT RATED PRESSURE

d = 0 ; r = 750



BODY LENGTH (BL)		OH	
5000	5250	5500	
27	48°	26	45°
33	51°	30	48°
42	55°	37	51°
		34	49°
		49	750

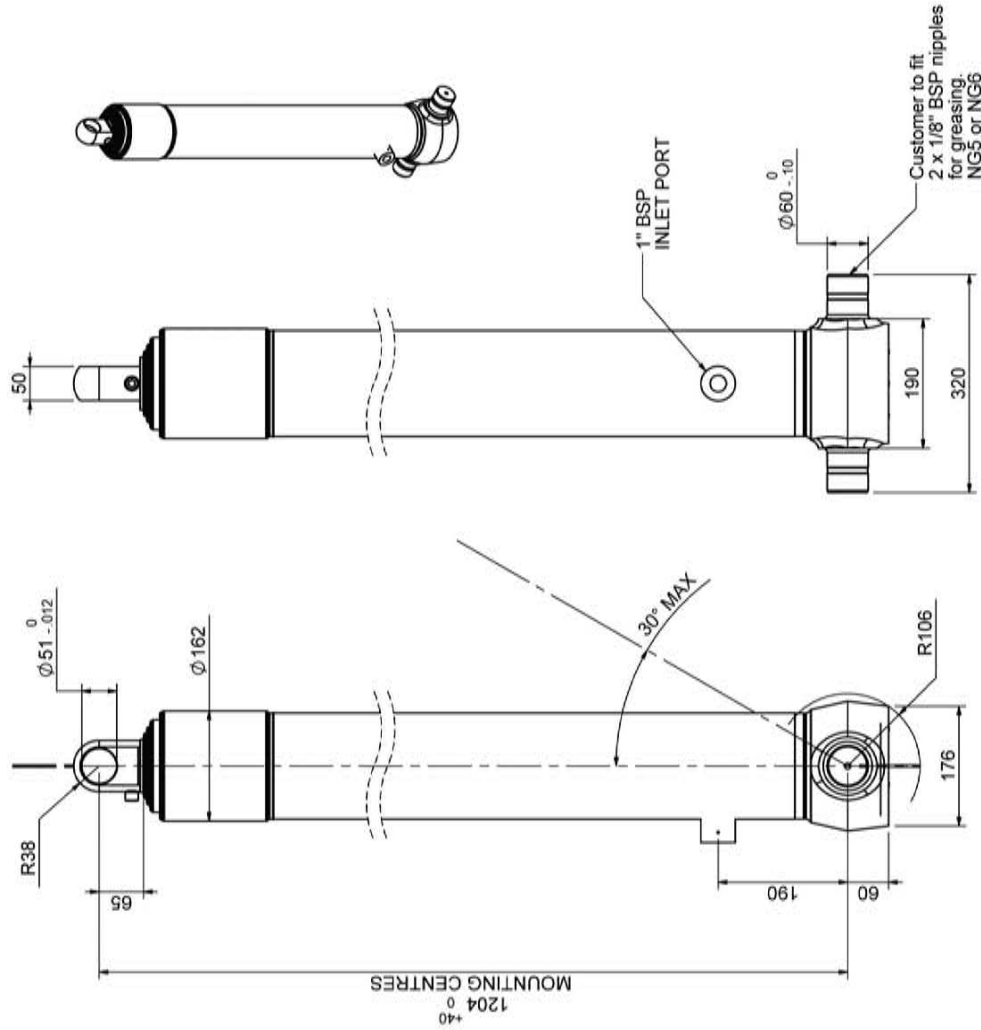
Tipping angle (θ)
Body + payload mass, W (tonne)

For guidance only;

Higher Rated Pressures may be possible. To check your application, email Edbro plc at <applications@edbro.co.uk>

NOTES

- If hydraulic pressure is used to limit overloading, the system relief valve must be set to the Rated Pressure unless agreed otherwise by Edbro
- The system relief valve can be set to Maximum Pressure if the load is limited by other means. See RATINGS page for advice
- This cylinder is for lifting purposes only and sideload conditions must be avoided
- Cylinder is painted in primer paint to RAL5013
- See bracket options page BRKT01, BRKT02
- See installation instructions INSTALL01
- Use oil according to specification OIL01



*Include 9mm Pull Out
All Stages Fully Chromed

Technical Specifications are subject to change without notice
Date Created/Updated: 16 July 2010 09:53:55
Refer www.edbro.com to confirm latest specification
All dimensions are in 'mm', unless otherwise stated

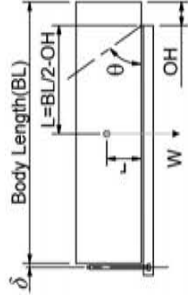
Cylinder 4 stage front end with plain eye

NCS130E424

SPECIFICATION		RATED CAPACITY : 24-38 TONNES***			
Stage	Diameter	Length	Stroke	Swept Volume	
-	-	-	-	-	-
-	-	-	-	-	-
0	155	1275	-	-	-
1	136	1240	1038	15	15
2	117	1240	1062	11	11
3	98	1240	1067	8	8
4	79	1240	1072	5	5
Final stroke reduced by		0	Total (+5/-10)	4239	39
Cylinder Mass (Kg)		111.08	Priming Volume	10.7	10.7
Rated Pressure (Bar)		175	Total Volume (Litres)	49.7	49.7
Maximum Pressure (Bar)		175	Max. first stage thrust	200 KN	200 KN

***TIPPING CAPACITY AT RATED PRESSURE

d = 0 ; r = 750



BODY LENGTH (BL)		OH	
5500	5750	6000	
26	48°	25	45°
31	51°	29	48°
38	55°	34	51°
		32	49°
		49°	750

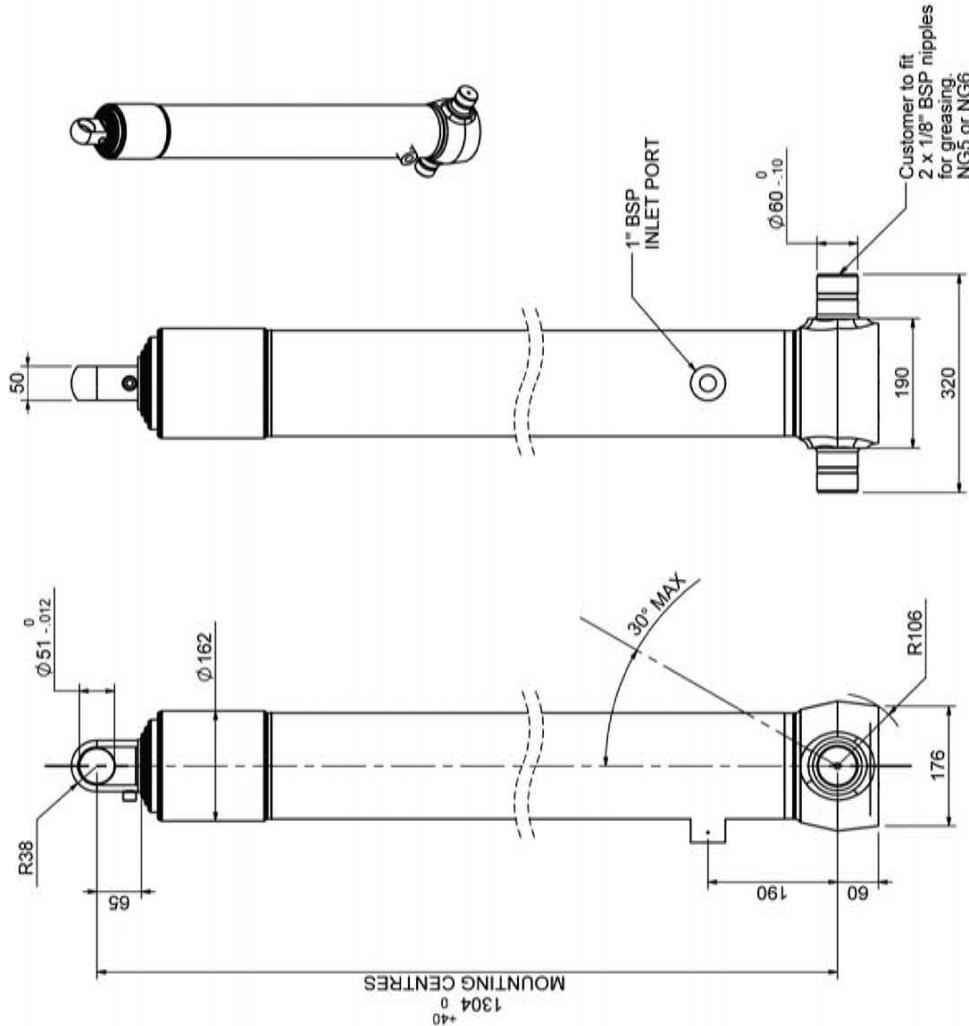
Body + payload mass, W (tonne)

For guidance only;

Higher Rated Pressures may be possible. To check your application, email Edbro plc at <applications@edbro.co.uk>

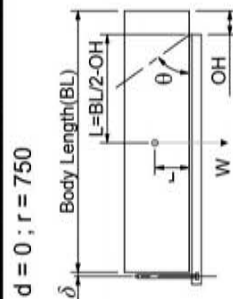
NOTES

- If hydraulic pressure is used to limit overloading, the system relief valve must be set to the Rated Pressure unless agreed otherwise by Edbro
- The system relief valve can be set to Maximum Pressure if the load is limited by other means. See RATINGS page for advice
- This cylinder is for lifting purposes only and sideload conditions must be avoided
- Cylinder is painted in primer paint to RAL5013
- See bracket options page BRKT01, BRKT02
- See installation instructions INSTALL01
- Use oil according to specification OIL01



*Include 9mm Pull Out
All Stages Fully Chromed

NCS130E464



Higher Rated Pressures may be possible. To check your application, email Edbro plc at <applications@edbro.co.uk>

- If hydraulic pressure is used to limit overloading, the system relief valve must be set to the Rated Pressure unless agreed otherwise by Edbro
- The system relief valve can be set to Maximum Pressure if the load is limited by other means. See RATINGS page for advice
- This cylinder is for lifting purposes only and sideload conditions must be avoided
- Cylinder is painted in primer paint to RAL5013
- See bracket options page BRKT01, BRKT02
- See installation instructions INSTALL01
- Use oil according to specification OIL01

***Include 9mm Pull Out
All Stages Fully Chromed**

Technical Specifications are subject to change without notice
Date Created/Updated: 22 December 2009 11:35:46
Refer www.edbro.com to confirm latest specification
All dimensions are in 'mm', unless otherwise stated

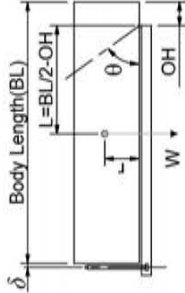
Cylinder 4 stage front end with plain eye

NCS130E544

SPECIFICATION		RATED CAPACITY : 14-20 TONNES***		
Stage	Diameter	Length	Stroke	Swept Volume
-	-	-	-	-
-	-	-	-	-
0	155	1575	-	-
1	136	1540	1338	19
2	117	1540	1362	15
3	98	1540	1367	10
4	79	1540	1372	7
Final stroke reduced by		0	Total (+5/-10)	5439
Cylinder Mass (Kg)		133.95	Priming Volume	13.5
Rated Pressure (Bar)		110	Total Volume (Litres)	64.5
Maximum Pressure (Bar)		175	Max. first stage thrust	200 KN

***TIPPING CAPACITY AT RATED PRESSURE

d = 0 ; r = 750



BODY LENGTH (BL)		OH	
6750	7250	7750	
16	50°	15	46°
18	52°	16	48°
20	55°	18	51°
		17	47°
		750	

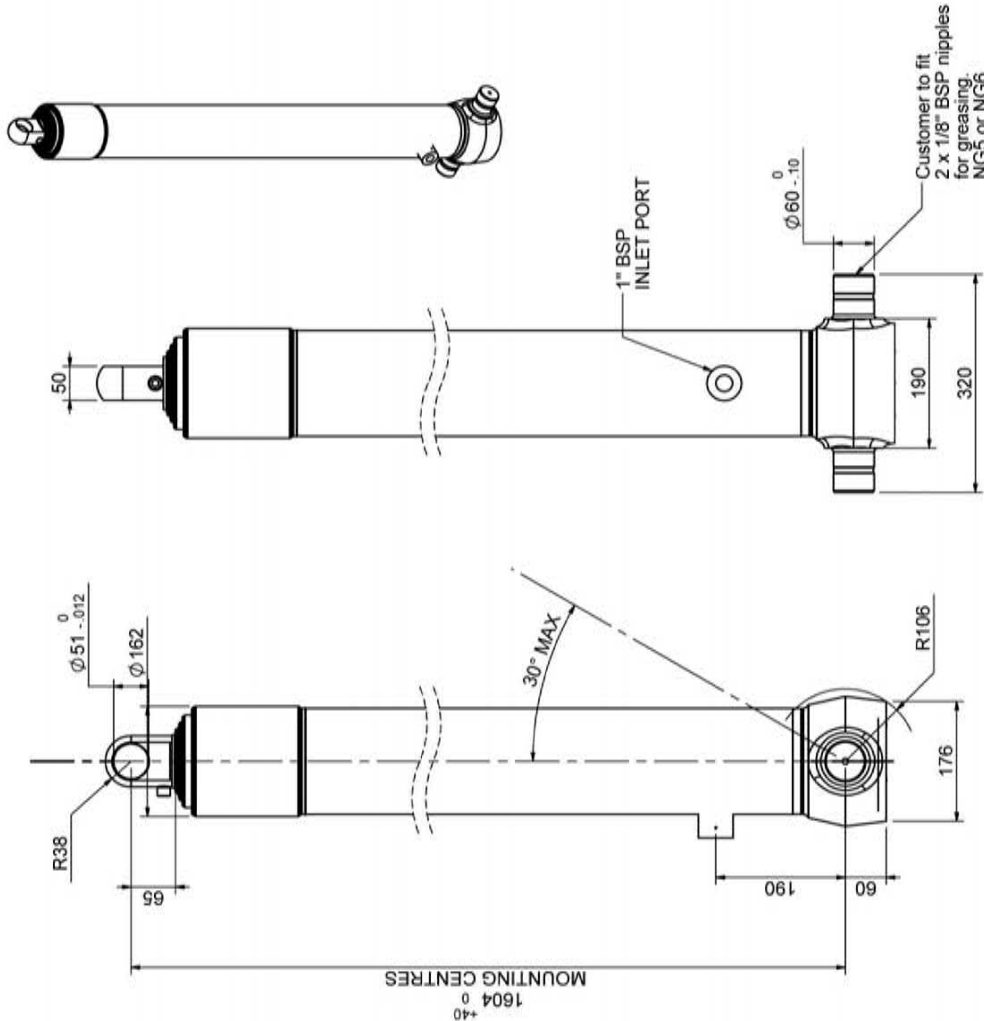
Tipping angle (θ)
Body + payload mass, W (tonne)

For guidance only;

Higher Rated Pressures may be possible. To check your application, email Edbro plc at <applications@edbro.co.uk>

NOTES

- If hydraulic pressure is used to limit overloading, the system relief valve must be set to the Rated Pressure unless agreed otherwise by Edbro
- The system relief valve can be set to Maximum Pressure if the load is limited by other means. See RATINGS page for advice
- This cylinder is for lifting purposes only and sideload conditions must be avoided
- Cylinder is painted in primer paint to RAL5013
- See bracket options page BRKT01, BRKT02
- See installation instructions INSTALL01
- Use oil according to specification OIL01



*Include 9mm Pull Out
All Stages Fully Chromed

Cylinder 5 stage front end with plain eye

NCS150E477

SPECIFICATION

RATED CAPACITY : 25-35 TONNES***

Stage	Diameter	Length	Stroke	Swept Volume
-	-	-	-	-
0	177	-	-	-
1	155	1175	927	-
2	136	1140	947	14
3	117	1140	962	10
4	102	1140	967	8
5	80	1140	972	5
Final stroke reduced by	0	Total (+5/-10)	4775	37
Cylinder Mass (Kg)	146.95	Priming Volume	11.6	
Rated Pressure (Bar)	135	Total Volume (Litres)	48.6	
Maximum Pressure (Bar)	175	Max. first stage thrust	230 KN	

***TIPPING CAPACITY AT RATED PRESSURE

d = 0 ; r = 750

BODY LENGTH (BL)		OH	
6250	6500	6750	
26	47°	25	45°
30	50°	28	47°
35	53°	33	50°
		31	48°
		48°	750

Tipping angle (θ)

Body + payload mass, W (tonne)

For guidance only;

Higher Rated Pressures may be possible. To check your application, email Edbro plc at <applications@edbro.co.uk>

NOTES

- If hydraulic pressure is used to limit overloading, the system relief valve must be set to the Rated Pressure unless agreed otherwise by Edbro

- The system relief valve can be set to Maximum Pressure if the load is limited by other means. See RATINGS page for advice

- This cylinder is for lifting purposes only and sideload conditions must be avoided

- Cylinder is painted in primer paint to RAL5013

- See bracket options page BRKT01, BRKT02

- See installation instructions INSTALL01

- Use oil according to specification OIL01

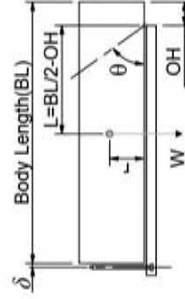
Cylinder 4 stage front end with plain eye

NCS15OE540

SPECIFICATION		RATED CAPACITY : 27-38 TONNES***		
Stage	Diameter	Length	Stroke	Swept Volume
-	-	-	-	-
-	-	-	-	-
0	177	1575	-	-
1	155	1540	1327	25
2	136	1540	1347	20
3	117	1540	1362	15
4	98	1540	1367	10
Final stroke reduced by		Total (+5/-10)	5403	70
Cylinder Mass (Kg)		Priming Volume	17.6	
Rated Pressure (Bar)		Total Volume (Litres)	87.6	
Maximum Pressure (Bar)		Max. first stage thrust	230 KN	

***TIPPING CAPACITY AT RATED PRESSURE

$$d = 0 ; r = 750$$



BODY LENGTH (BL)		OH	
6750	7250	7750	
30	49°	28	46°
33	52°	31	48°
38	55°	34	50°
		32	46°
		46°	750

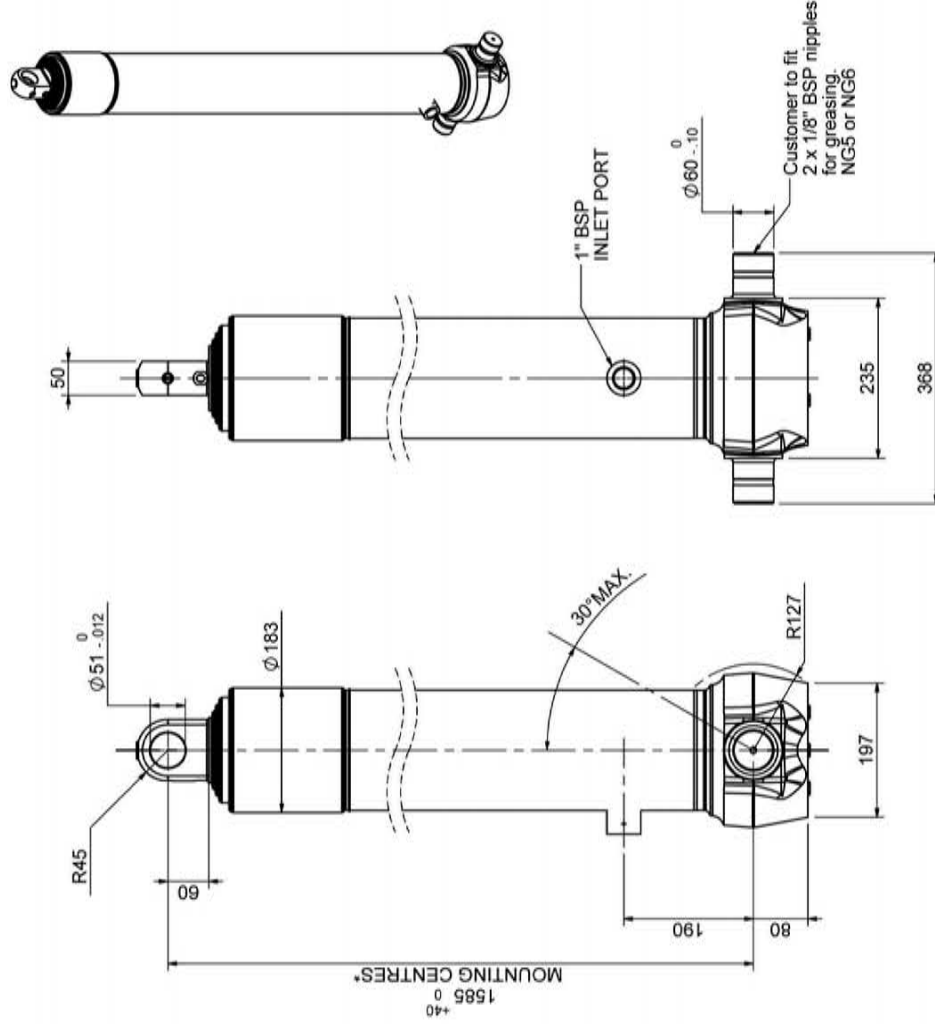
Tipping angle (θ)
Body + payload mass, W (tonne)

For guidance only;

Higher Rated Pressures may be possible. To check your application, email Edbro plc at <applications@edbro.co.uk>

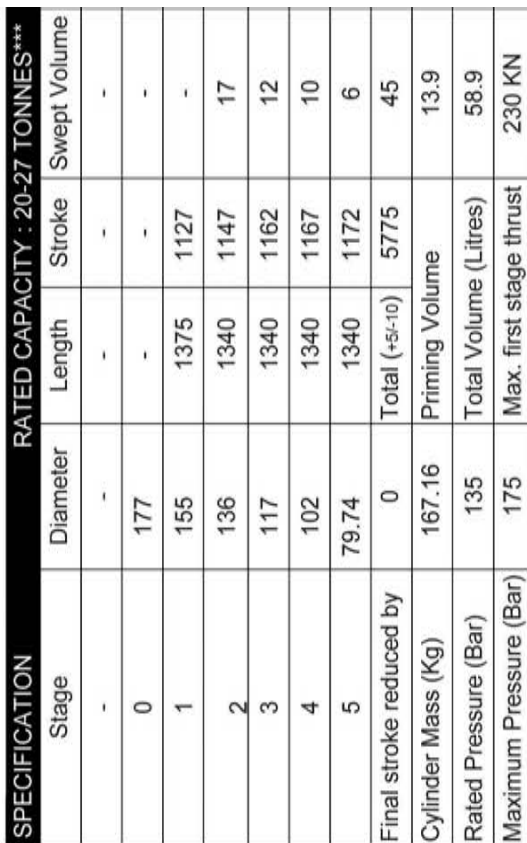
NOTES

- If hydraulic pressure is used to limit overloading, the system relief valve must be set to the Rated Pressure unless agreed otherwise by Edbro
- The system relief valve can be set to Maximum Pressure if the load is limited by other means. See RATINGS page for advice
- This cylinder is for lifting purposes only and sideload conditions must be avoided
- Cylinder is painted in primer paint to RAL5013
- See bracket options page BRKT01, BRKT02
- See installation instructions INSTALL01
- Use oil according to specification OIL01



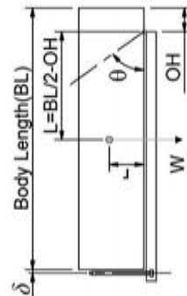
*Include 9mm Pull Out
All stages Chrome Plated

NCS150E577



***TIPPING CAPACITY AT RATED PRESSURE

d = 0 ; r = 750



For guidance only;

For guidance only,
Higher Rated Pressures may be possible. To check your application,
email Edbro plc at <applications@edbro.co.uk>

NOTES

- If hydraulic pressure is used to limit overloading, the system relief valve must be set to the Rated Pressure unless agreed otherwise by Edbro
- The system relief valve can be set to Maximum Pressure if the load is limited by other means. See RATINGS page for advice
- This cylinder is for lifting purposes only and sideload conditions must be avoided
- Cylinder is painted in primer paint to RAL5013
- See bracket options page BRKT01, BRKT02
- See installation instructions INSTALL01
- Use oil according to specification OIL01

***Include 9mm Pull Out
All Stages Chrome Plated**



Transpecs
QUALITY ON THE MOVE

Technical Specifications are subject to change without notice
Date Created/Updated: 05 March 2010 11:48:46
Refer www.edbro.com to confirm latest specification
All dimensions are in 'mm', unless otherwise stated

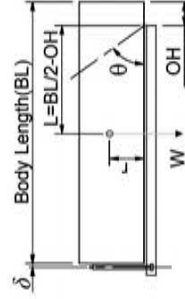
Cylinder 5 stage front end with plain eye

NCS170E573

SPECIFICATION		RATED CAPACITY : 31-46 TONNES***		
Stage	Diameter	Length	Stroke	Swept Volume
-	-	-	-	-
0	199	1375	-	-
1	176	1340	1117	27
2	155	1340	1137	21
3	136	1340	1147	17
4	117	1340	1162	12
5	98	1340	1167	9
Final stroke reduced by	0	Total (+5/-10)	5730	86
Cylinder Mass (Kg)	209.58	Priming Volume		18
Rated Pressure (Bar)	150	Total Volume (Litres)		104
Maximum Pressure (Bar)	175	Max. first stage thrust		260 KN

***TIPPING CAPACITY AT RATED PRESSURE

d = 0 ; r = 900



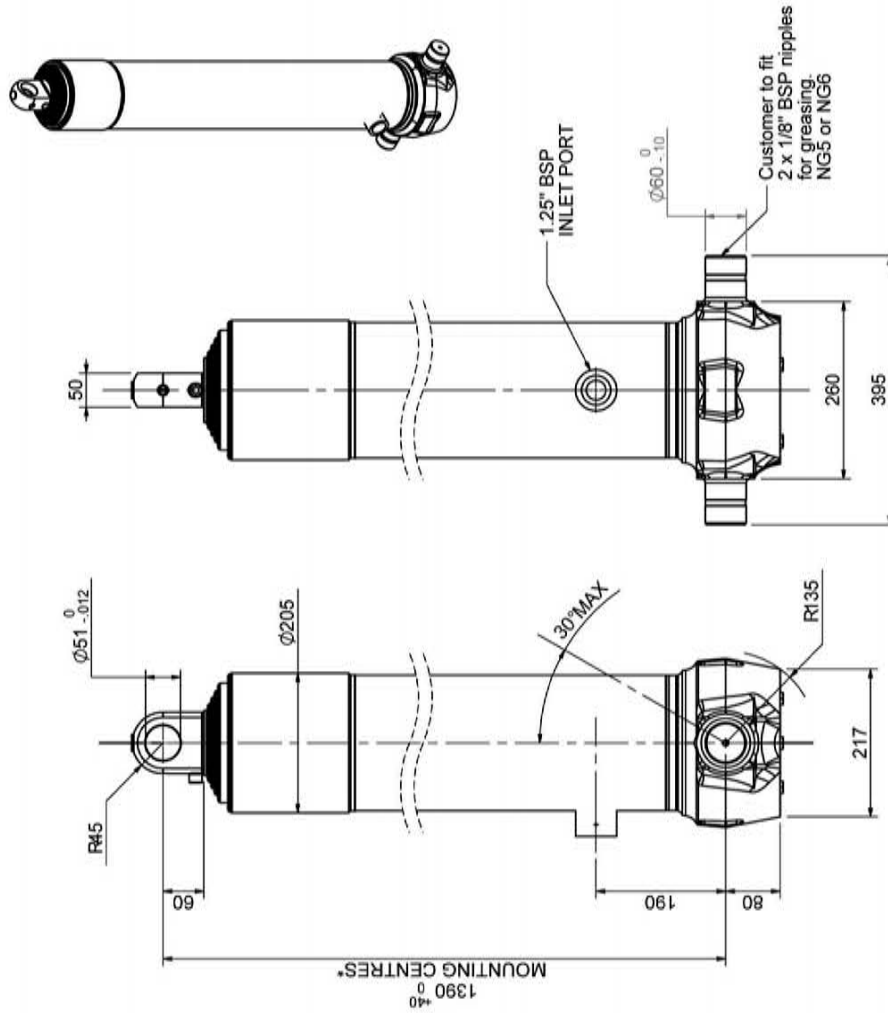
BODY LENGTH (BL)		OH	
7250	7750	8250	
35	49°	33	45°
40	51°	36	47°
46	54°	40	49°
		37	46°
		750	

For guidance only;

Higher Rated Pressures may be possible. To check your application, email Edbro plc at <applications@edbro.co.uk>

NOTES

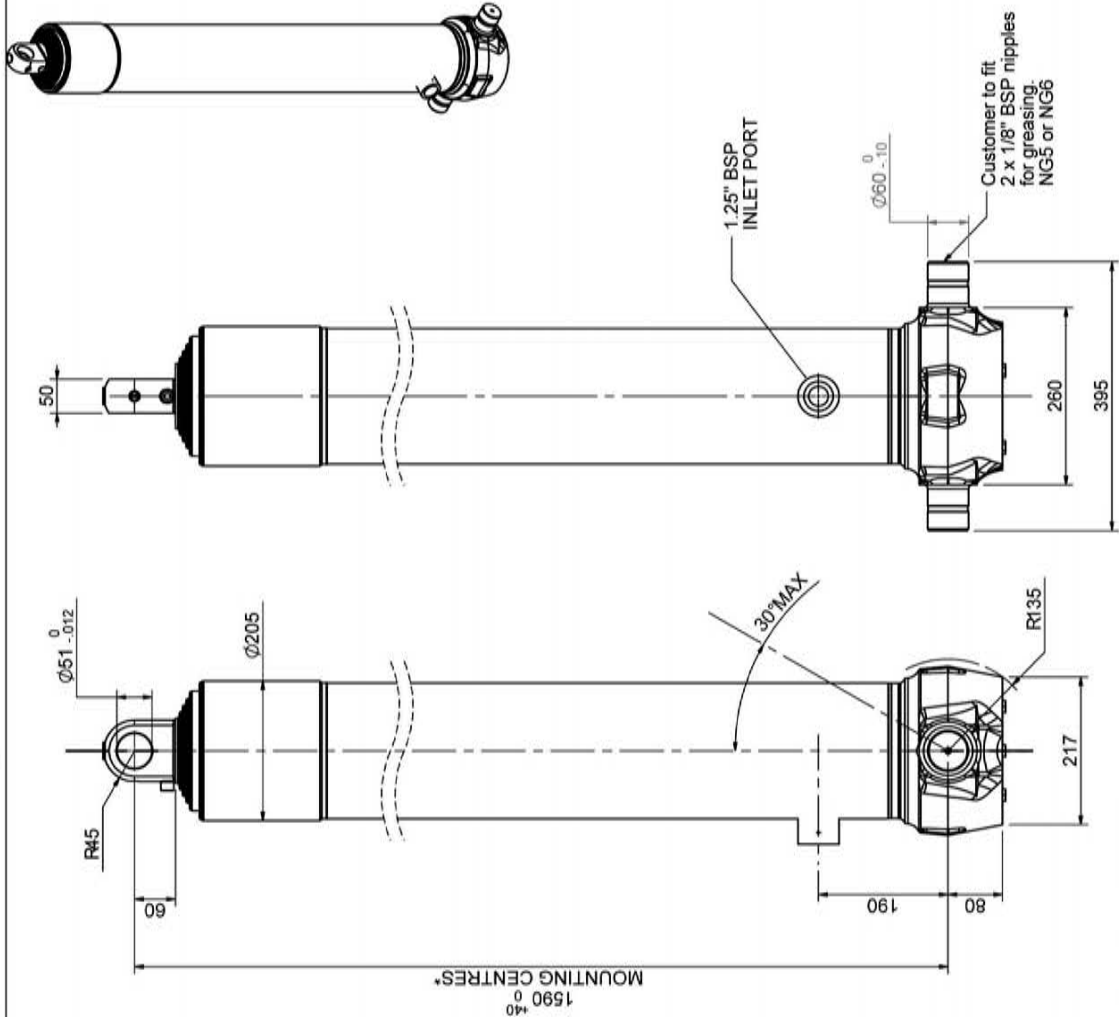
- If hydraulic pressure is used to limit overloading, the system relief valve must be set to the Rated Pressure unless agreed otherwise by Edbro
- The system relief valve can be set to Maximum Pressure if the load is limited by other means. See RATINGS page for advice
- This cylinder is for lifting purposes only and sideload conditions must be avoided
- Cylinder is painted in primer paint to RAL5013
- See bracket options page BRKT01, BRKT02
- See installation instructions INSTALL01
- Use oil according to specification OIL01



*Includes 9mm Pull Out
All Stages Chrome Plated

Technical Specifications are subject to change without notice
Date Created/Updated: 26 August 2009 07:37:08
Refer www.edbro.com to confirm latest specification
All dimensions are in 'mm', unless otherwise stated

Cylinder 5 stage front end with plain eye

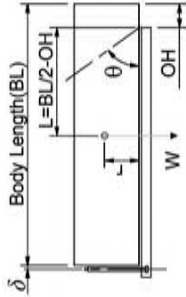


NCS170E673

SPECIFICATION			RATED CAPACITY : 31-39 TONNES***		
Stage	Diameter	Length	Stroke	Swept Volume	
-	-	-	-	-	-
0	199	1575	-	-	-
1	176	1540	1317	32	
2	155	1540	1337	25	
3	136	1540	1347	20	
4	117	1540	1362	15	
5	98	1540	1367	10	
Final stroke reduced by	0	Total (+/-10)	6730	102	
Cylinder Mass (Kg)	234.56	Priming Volume		21	
Rated Pressure (Bar)	135	Total Volume (Litres)		123	
Maximum Pressure (Bar)	175	Max. first stage thrust		260 KN	

***TIPPING CAPACITY AT RATED PRESSURE

d = 0 ; r = 900



BODY LENGTH (BL)		OH	
8500	9000	9500	
31	50°		150
34	52°	32	49°
39	55°	35	51°
		33	47°
			750

Tipping angle (θ)
Body + payload mass, W (tonne)

For guidance only;

Higher Rated Pressures may be possible. To check your application, email Edbro plc at <applications@edbro.co.uk>

NOTES

- If hydraulic pressure is used to limit overloading, the system relief valve must be set to the Rated Pressure unless agreed otherwise by Edbro
- The system relief valve can be set to Maximum Pressure if the load is limited by other means. See RATINGS page for advice
- This cylinder is for lifting purposes only and sideload conditions must be avoided
- Cylinder is painted in primer paint to RAL5013
- See bracket options page BRKT01, BRKT02
- See installation instructions INSTALL01
- Use oil according to specification OIL01

*Includes 9mm Pull Out
All Stages Chrome Plated

NCS18OE823



For guidance only;
Higher Rated Pressures may be possible. To check your application,
email Edbro plc at <applications@edbro.co.uk>

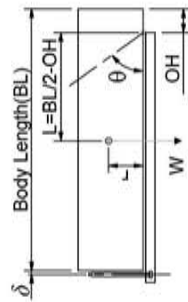
NOTES

- If hydraulic pressure is used to limit overloading, the system relief valve must be set to the Rated Pressure unless agreed otherwise by Edbro
- The system relief valve can be set to Maximum Pressure if the load is limited by other means. See RATINGS page for advice
- This cylinder is for lifting purposes only and sideload conditions must be avoided
- Cylinder is painted in primer paint to RAL5013
- See bracket options page BRKT01, BRKT02
- See installation instructions INSTALL01
- Use oil according to specification OIL01

Technical Specifications are subject to change without notice
Date Created/Updated: 31 March 2010 11:17:10
Refer www.edbro.com to confirm latest specification
All dimensions are in "mm", unless otherwise stated

NCS1300457

SPECIFICATION
RATED CAPACITY : 17-26 TONNES***



Higher Rated Pressures may be possible. To check your application, email Edbro plc at <applications@edbro.co.uk>

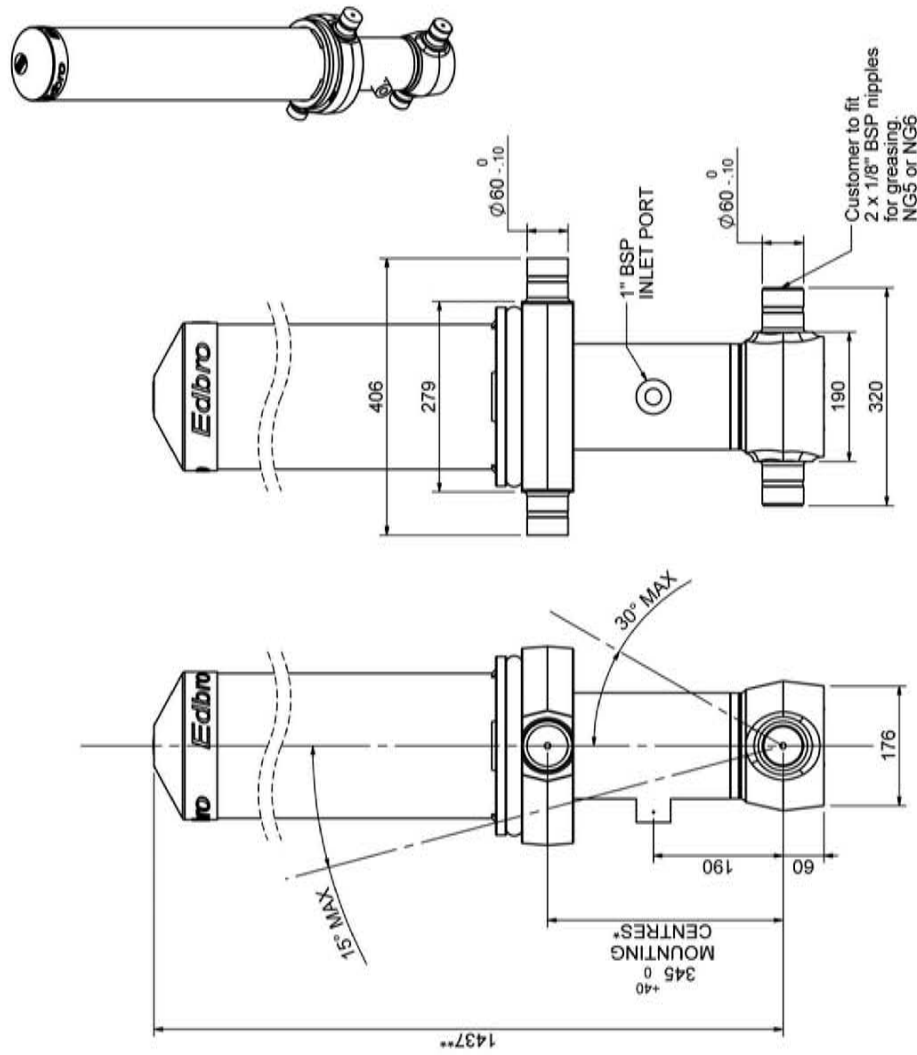
- If hydraulic pressure is used to limit overloading, the system relief valve must be set to the Rated Pressure unless agreed otherwise by Edbro
- The system relief valve can be set to Maximum Pressure if the load is limited by other means. See RATINGS page for advice
- This cylinder is for lifting purposes only and sideload conditions must be avoided
- Cylinder is painted in primer paint to RAL5013
- See bracket options page BRKT01, BRKT02
- See installation instructions INSTALL01
- Use oil according to specification OIL01

***Include 10mm Pull Out
All Stages Chrome Plated**

Technical Specifications are subject to change without notice
Date Created/Updated: 23 December 2009 08:18:23
Refer www.edbro.com to confirm latest specification
All dimensions are in 'mm', unless otherwise stated

Cylinder 4 stage front end with Outer Cover

**ALLOW 50mm TO REMOVE
CAP FOR SERVICING



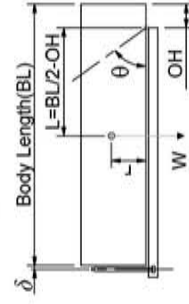
*Include 9mm Pull Out
All Stages Fully Chromed

NCS130O464

SPECIFICATION		RATED CAPACITY : 25-38 TONNES***		
Stage	Diameter	Length	Stroke	Swept Volume
OUTER COVER	-	-	-	-
0	213	1040	-	-
1	155	1375	-	-
2	136	1340	1138	17
3	117	1340	1162	12
4	98	1340	1167	9
	79	1340	1172	6
Final stroke reduced by	0	Total (+5/-10)	4639	44
Cylinder Mass (Kg)	167.87	Priming Volume		11.6
Rated Pressure (Bar)	175	Total Volume (Litres)		55.6
Maximum Pressure (Bar)	175	Max. first stage thrust		170 KN

***TIPPING CAPACITY AT RATED PRESSURE

d = 178 ; r = 750



BODY LENGTH (BL)		OH	
5750	6000	6250	
27	48°	26	46°
32	50°	30	48°
38	54°	35	51°
		33	49°
		49°	750

Tipping angle (θ)
Body + payload mass, W (tonne)

For guidance only;

Higher Rated Pressures may be possible. To check your application, email Edbro plc at <applications@edbro.co.uk>

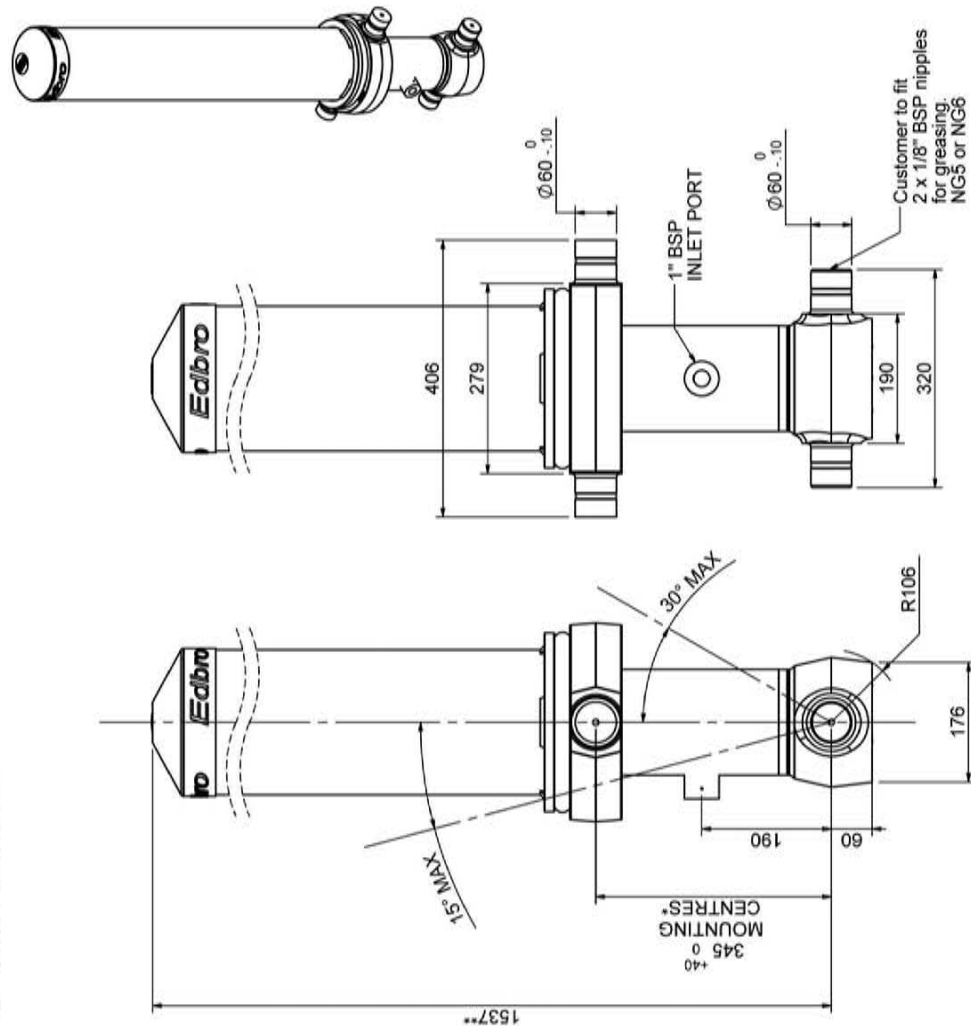
NOTES

- If hydraulic pressure is used to limit overloading, the system relief valve must be set to the Rated Pressure unless agreed otherwise by Edbro
- The system relief valve can be set to Maximum Pressure if the load is limited by other means. See RATINGS page for advice
- This cylinder is for lifting purposes only and sideload conditions must be avoided
- Cylinder is painted in primer paint to RAL5013
- See bracket options page BRKT01, BRKT02
- See installation instructions INSTALL01
- Use oil according to specification OIL01

Technical Specifications are subject to change without notice
Date Created/Updated: 23 December 2009 12:43:10
Refer www.edbro.com to confirm latest specification
All dimensions are in 'mm', unless otherwise stated

Cylinder 4 stage front end with Outer Cover

**ALLOW 50mm TO REMOVE
CAP FOR SERVICING

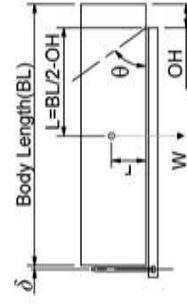


NCS130O504

SPECIFICATION		RATED CAPACITY : 24-38 TONNES***		
Stage	Diameter	Length	Stroke	Swept Volume
OUTER COVER	-	-	-	-
0	155	1475	-	-
1	136	1440	1238	18
2	117	1440	1262	14
3	98	1440	1267	10
4	79	1440	1272	6
Final stroke reduced by	0	Total (+5/-10)	5039	48
Cylinder Mass (Kg)	176.2	Priming Volume		12.6
Rated Pressure (Bar)	175	Total Volume (Litres)		60.6
Maximum Pressure (Bar)	175	Max. first stage thrust		170 kN

***TIPPING CAPACITY AT RATED PRESSURE

d = 178 ; r = 750



BODY LENGTH (BL)		OH	
6000	6500	7000	
28	50°	26	46°
32	53°	29	48°
38	56°	33	51°
		30	46°
		46°	750

For guidance only;

Higher Rated Pressures may be possible. To check your application, email Edbro plc at <applications@edbro.co.uk>

NOTES

- If hydraulic pressure is used to limit overloading, the system relief valve must be set to the Rated Pressure unless agreed otherwise by Edbro
- The system relief valve can be set to Maximum Pressure if the load is limited by other means. See RATINGS page for advice
- This cylinder is for lifting purposes only and sideload conditions must be avoided
- Cylinder is painted in primer paint to RAL5013
- See bracket options page BRKT01, BRKT02
- See installation instructions INSTALL01
- Use oil according to specification OIL01

Technical Specifications are subject to change without notice
Date Created/Updated: 23 December 2009 12:53:54
Refer www.edbro.com to confirm latest specification
All dimensions are in 'mm', unless otherwise stated

NCS1300544

1637**

Cap for Servicing

Technical drawing of the Edbro 1637** cap for servicing, showing side and front views with dimensions and labels.

Side View Dimensions:

- Overall length: 406
- Distance from base to inlet port: 279
- Base diameter: $\varnothing 60 \begin{smallmatrix} 0 \\ -10 \end{smallmatrix}$
- Distance from base to mounting center: 190
- Overall height: 320

Front View Dimensions:

- Overall width: 176
- Distance from base to mounting center: 190
- Base diameter: $\varnothing 60 \begin{smallmatrix} 0 \\ -10 \end{smallmatrix}$
- Mounting center diameter: $\varnothing 345 \begin{smallmatrix} 0 \\ +40 \end{smallmatrix}$
- Mounting center radius: R106
- Mounting center angle: 30° MAX
- Mounting center distance: 60

Labels:

- 1" BSP INLET PORT
- Customer to fit 2 x 1/8" BSP nipples for greasing. NPS or NGS

***TIPPING CAPACITY AT RATED PRESSURE

Higher Rated Pressures may be possible. To check your application, email Edbro plc at <applications@edbro.co.uk>

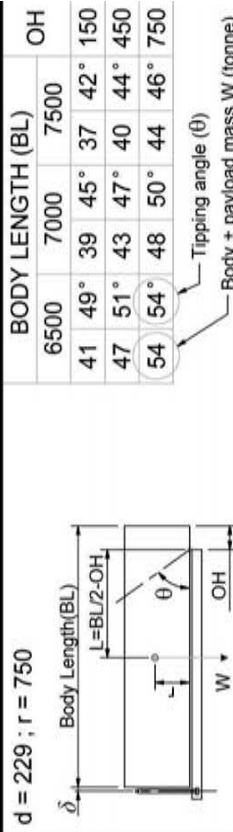
- If hydraulic pressure is used to limit overloading, the system relief valve must be set to the Rated Pressure unless agreed otherwise by Edbro
- The system relief valve can be set to Maximum Pressure if the load is limited by other means. See RATINGS page for advice
- This cylinder is for lifting purposes only and sideload conditions must be avoided
- Cylinder is painted in primer paint to RAL5013
- See bracket options page BRKT01, BRKT02
- See installation instructions INSTALL01
- Use oil according to specification OIL01

***Include 9mm Pull Out
All Stages Chrome Plated**

Technical Specifications are subject to change without notice
Date Created/Updated: 23 December 2009 12:12:20
Refer www.edbro.com to confirm latest specification
All dimensions are in 'mm', unless otherwise stated

NCS1500540

SPECIFICATION
RATED CAPACITY : 37-54 TONNES***



Higher Rated Pressures may be possible. To check your application, email Edbro plc at <applications@edbro.co.uk>

- If hydraulic pressure is used to limit overloading, the system relief valve must be set to the Rated Pressure unless agreed otherwise by Edbro
- The system relief valve can be set to Maximum Pressure if the load is limited by other means. See RATINGS page for advice
- This cylinder is for lifting purposes only and sideload conditions must be avoided
- Cylinder is painted in primer paint to RAL5013
- See bracket options page BRKT01, BRKT02
- See installation instructions INSTALL01
- Use oil according to specification OIL01

Edbro  **Transpecs** =
SETTING THE INDUSTRY STANDARD *QUALITY ON THE MOVE*

Technical Specifications are subject to change without notice
Date Created/Updated: 19 November 2009 13:41:08
Refer www.edbro.com to confirm latest specification
All dimensions are in "mm", unless otherwise stated

NCS1500652

Technical drawing of the Edbro 1625** pump assembly, showing front, side, and detail views with dimensions and labels.

Front View Dimensions:

- Total height: 1625**
- Mounting centres (MOUNTING CENTRES*): 345⁰/₊₄₀
- Distance from mounting centres to base: 190
- Base width: 80
- Base radius: R127
- Base diameter: 197
- Top flange diameter: 60⁰/₋₁₀
- Top flange width: 235
- Top flange to base distance: 368

Side View Dimensions:

- Edbro logo on top flange
- Top flange diameter: 60⁰/₋₁₀
- Top flange width: 235
- Top flange to base distance: 368
- Base width: 80
- Base radius: R127
- Base diameter: 197
- Base to mounting centres distance: 190
- Mounting centres (MOUNTING CENTRES*): 345⁰/₊₄₀
- Distance from mounting centres to base: 190
- Base width: 80
- Base radius: R127
- Base diameter: 197

Detail View Dimensions:

- 1" BSP INLET PORT
- Customer to fit 2 x 1/8" BSP nipple for greasing. NG5 or NG6
- Top flange diameter: 60⁰/₋₁₀
- Top flange width: 235
- Top flange to base distance: 368
- Base width: 80
- Base radius: R127
- Base diameter: 197

Labels:

- Edbro
- 1" BSP INLET PORT
- Customer to fit 2 x 1/8" BSP nipple for greasing. NG5 or NG6
- MOUNTING CENTRES*
- 15° MAX.
- 30° MAX.

*****TIPPING CAPACITY AT RATED PRESSURE**

$d = 229$; $r = 750$

The diagram shows a crane boom of length $L = BL/2 - OH$ pivoted at a point. A weight W acts downwards at the end of the boom. The tipping angle θ is shown between the boom and the vertical. The boom is divided into segments of 8000, 8500, and 9000 units. The table below provides the tipping angles for different body lengths and heights.

BODY LENGTH (BL)		OH	
8000	8500	9000	
27	48°	26	45°
25	42°	150	
30	50°	28	47°
26	44°	450	
34	52°	31	48°
29	45°	750	

Labels in diagram: δ , Body Length(BL), $L = BL/2 - OH$, θ , W , OH .

Labels in table: BODY LENGTH (BL), OH, Tipping angle (θ), Body + payload mass W (tonne).

NOTES

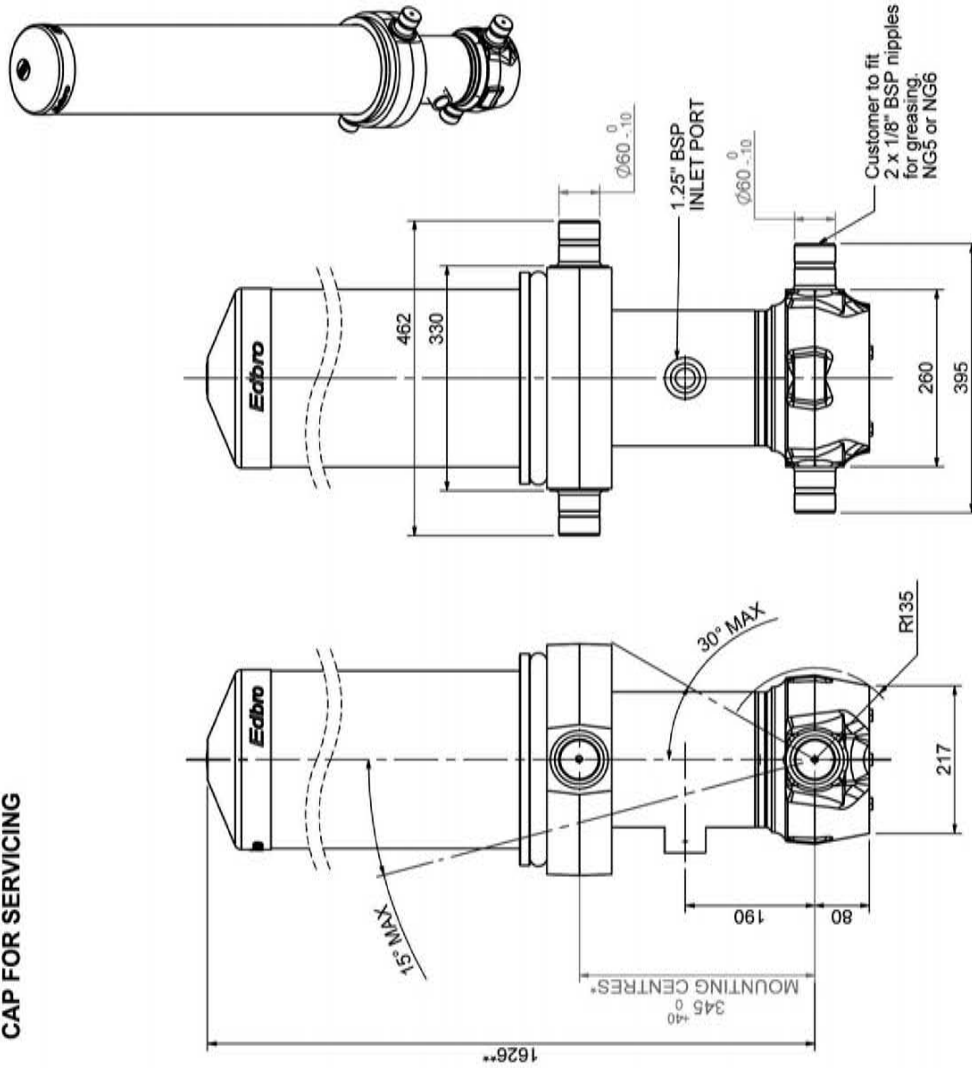
- If hydraulic pressure is used to limit overloading, the system relief valve must be set to the Rated Pressure unless agreed otherwise by Edbro
- The system relief valve can be set to Maximum Pressure if the load is limited by other means. See RATINGS page for advice
- This cylinder is for lifting purposes only and sideload conditions must be avoided
- Cylinder is painted in primer paint to RAL5013
- See bracket options page BRKT01, BRKT02
- See installation instructions INSTALL01
- Use oil according to specification OIL01

***Include 11mm Pull Out
All Stages Chrome Plated**

Technical Specifications are subject to change without notice
Date Created/Updated: 19 November 2009 15:55:44
Refer www.edbro.com to confirm latest specification
All dimensions are in 'mm', unless otherwise stated

Cylinder 5 stage front end with Outer Cover

****ALLOW 50mm TO REMOVE
CAP FOR SERVICING**

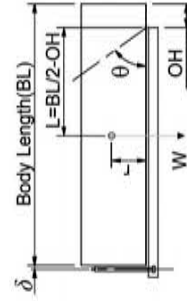


NCS1700673

SPECIFICATION		RATED CAPACITY : 37-51 TONNES***		
Stage	Diameter	Length	Stroke	Swept Volume
OUTER COVER	261	1245	-	-
0	199	1575	-	-
1	176	1540	1314	32
2	155	1540	1337	25
3	136	1540	1347	20
4	117	1540	1362	15
5	98	1540	1367	10
Final stroke reduced by	0	Total (+5/-10)	6727	102
Cylinder Mass (Kg)	312.23	Priming Volume		21
Rated Pressure (Bar)	175	Total Volume (Litres)		123
Maximum Pressure (Bar)	175	Max. first stage thrust		260 KN

***TIPPING CAPACITY AT RATED PRESSURE

$d = 229$; $r = 900$



BODY LENGTH (BL)		OH	
8250	8750	9250	
41	48°	39	45°
45	50°	42	47°
51	52°	46	49°
		43	46°
		750	750

For guidance only;

Higher Rated Pressures may be possible. To check your application, email Edbro plc at <applications@edbro.co.uk>

NOTES

- If hydraulic pressure is used to limit overloading, the system relief valve must be set to the Rated Pressure unless agreed otherwise by Edbro
- The system relief valve can be set to Maximum Pressure if the load is limited by other means. See RATINGS page for advice
- This cylinder is for lifting purposes only and sideload conditions must be avoided
- Cylinder is painted in primer paint to RAL5013
- See bracket options page BRKT01, BRKT02
- See installation instructions INSTALL01
- Use oil according to specification OIL01

***Includes 12mm Pull Out
All Stages Chrome Plated**

Technical Specifications are subject to change without notice
Date Created/Updated: 21 August 2009 16:02:09
Refer www.edbro.com to confirm latest specification
All dimensions are in 'mm', unless otherwise stated