

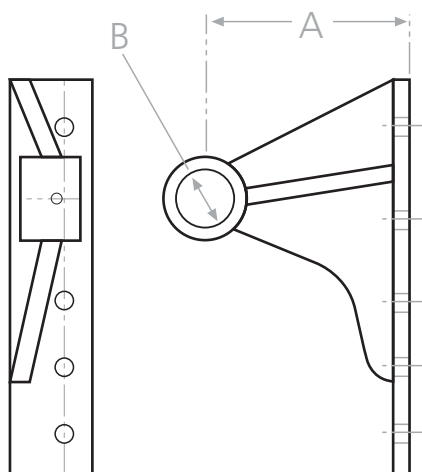


## PRE 2010 CS Series - Lifting Brackets & Mounting Feet

Content:	Page:
Lifting Brackets	3-01
Mounting Feet	3-02

## PRE 2010 CS Series Hoists

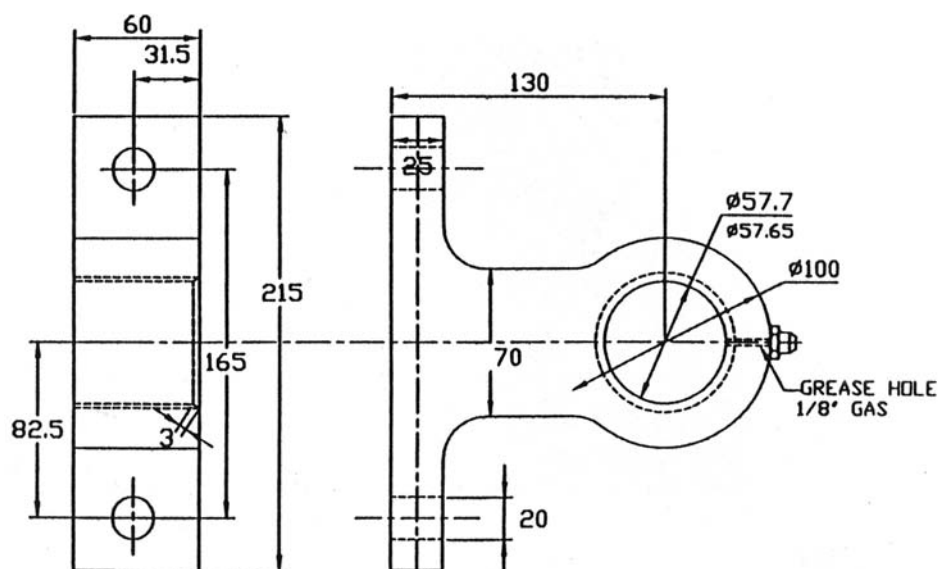
Hoist Part Number:	Page:	Hoist Part Number:	Page:	Hoist Part Number:	Page:
CS 10EE215	3-04	CS 13OE504	3-22	CS 130O407	3-40
CS 11EE214	3-05	CS 13OE504H	3-23	CS 130O457	3-41
CS 114443	3-06	CS 13OE544	3-24	CS 130O464	3-42
CS 114443T	3-07	CS 15OE477	3-25	CS 130O504	3-43
CS 11EE297	3-08	CS 15OE477H	3-26	CS 130O544	3-44
CS 13EE241	3-09	CS 15OS480	3-27	CS 150O540	3-45
CS 13EE324	3-10	CS 15OE540	3-28	CS 150O652	3-46
CS 10EE215	3-11	CS 15OE540H	3-29	CS 170O673	3-47
CS 10OE320	3-12	CS 15OE577	3-30	CX 100O320	3-48
CS 114443	3-13	CS 17OE573	3-31	CX 100O365	3-49
CS 11OE319	3-14	CS 17OE673	3-32	CX 110O349	3-50
CS 11OE349	3-15	CS 100O320	3-33	CX 110O364	3-51
CS 11OE409	3-16	CS 100O365	3-34	CX 110O427	3-52
CS 13EE324	3-17	CS 100O425	3-35	CX 130O424	3-53
CS 13OE346	3-18	CS 110O349	3-36	CX 130O464	3-54
CS 13OE424	3-19	CS 110O364	3-37	CX 130O544	3-55
CS 13OE424	3-20	CS 110O409	3-38		
CS 13OE464H	3-21	CS 110O427	3-39		



### Lifting Brackets

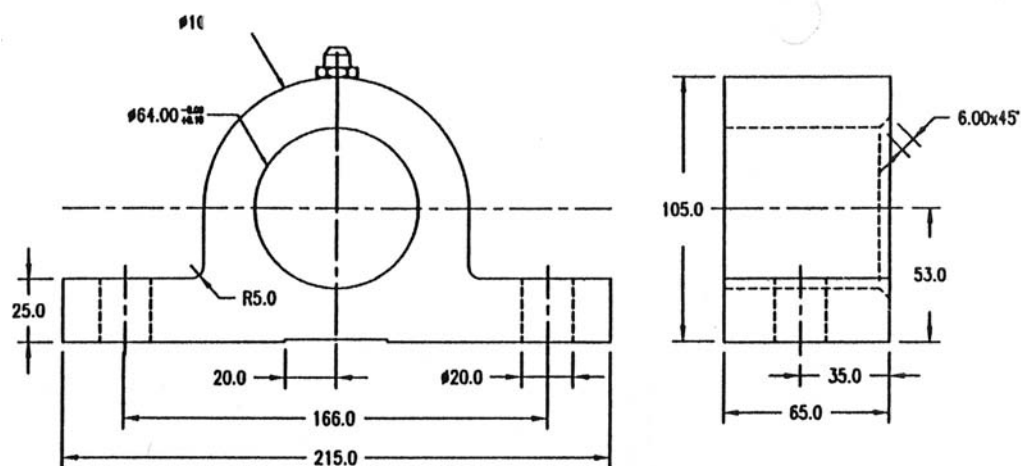
Left	Right	A	B	
EB166	EB165	115	35	
EB3W	EB3X	140	35	
EB234	EB233	175	45	
EB241/9	EB240/9	228	45	
EB2415D	EB2405D	175	45	Heavy Duty
EBF624	EBF625	225	57	

Note: All lifting brackets are pre-drilled.



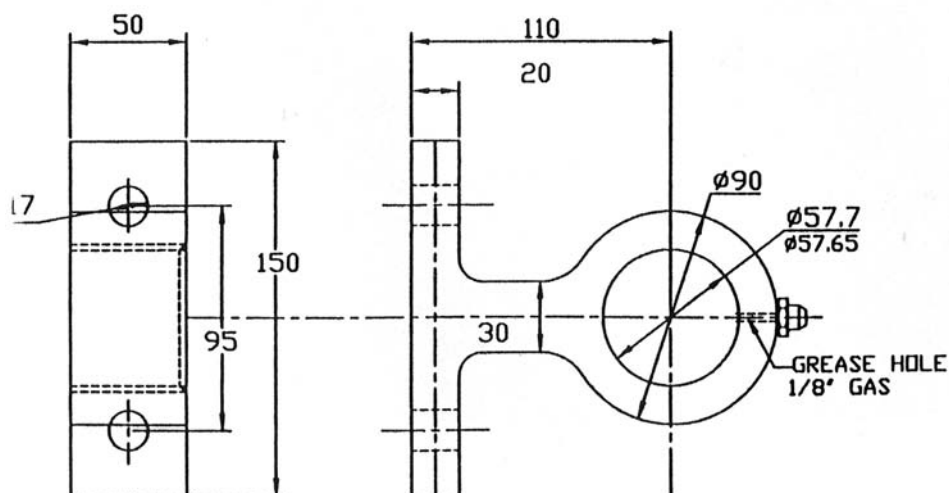
NOTES:  
CHAMFER FACE TO RAM  
GREASE NIPPLE TO REAR

GA2

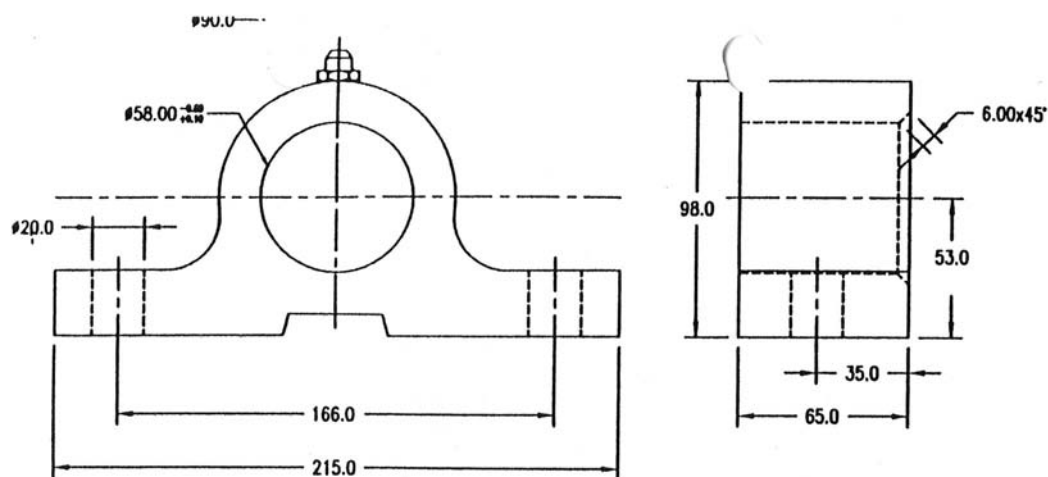


NOTES:  
WEIGHT: 4.7 Kg  
CHAMFER FACE TO RAM

6605



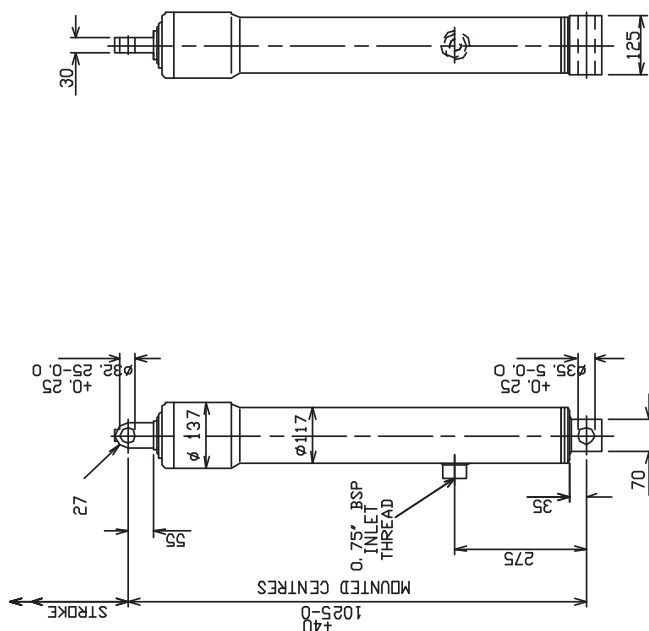
GA1/58



6604

BODY AND PAYLOAD IS FOR TWIN RAMS @ 150BAR  
PIVOT LENGTHS SHOWN GIVE 48° TIP

		BODY LENGTH							
		6000	5800	5600	5400	5100	4800	4500	□/HANG
13	14		14	15	16	17	18	20	200
14	15		15	15	16	16.5	18.5	21	400
15	15		15	16	17	19	20	23	600



\* All stages are hard chromed.

STAGES	3
SWEPT VOLUME	11.5 l
STROKE	2159
OPERATING PRESSURE	135 bar
MAXIMUM PRESSURE	150 bar
CYLINDER WEIGHT DRY	48 kg

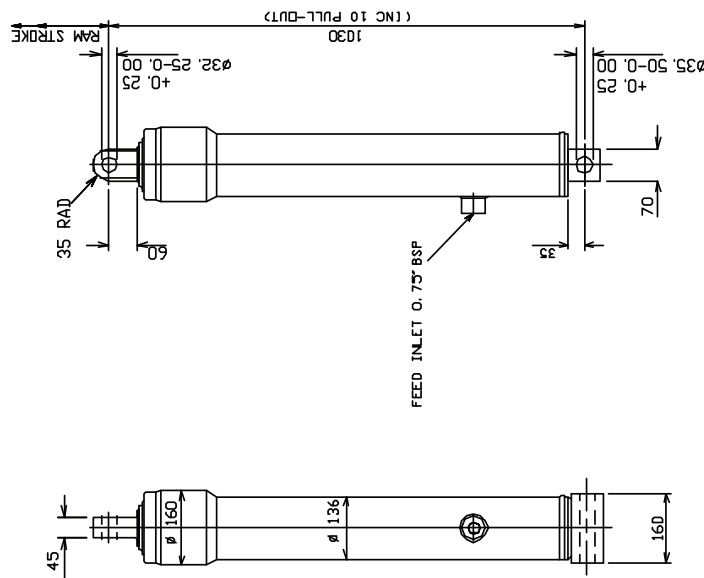
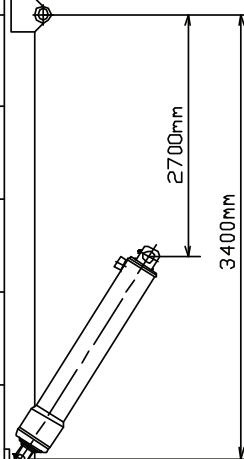
DIMENSIONS IN MILLIMETRES UNLESS STATED OTHERWISE

SEAL KIT KCS10/3

MAX LOAD 23 TONNE

CYLINDER ASSEMBLY CS10EE215

BODY LENGTH									
6750	6500	6250	6000	5750	5500	5250	□/HANG		
18	19	20	21	22	23	25			
19	20	21	23	24	26	28			
21	22	22	25	27	29	31			



NOTE : INTERMEDIATE TUBES HARDCHROMED

STAGES	3
SWEPT VOLUME	17, 22 l
TOTAL STROKE	2144 MM
OPERATING PRESSURE	135 bar
MAXIMUM PRESSURE	150 bar
CYLINDER WEIGHT DRY	63 kg

**DIMENSIONS IN MILLIMETRES UNLESS STATED OTHERWISE**

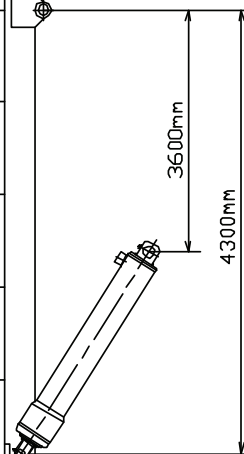
CYLINDER ASSEMBLY	CS11FE214
-------------------	-----------

MAX LOAD	REFER CHART
----------	-------------

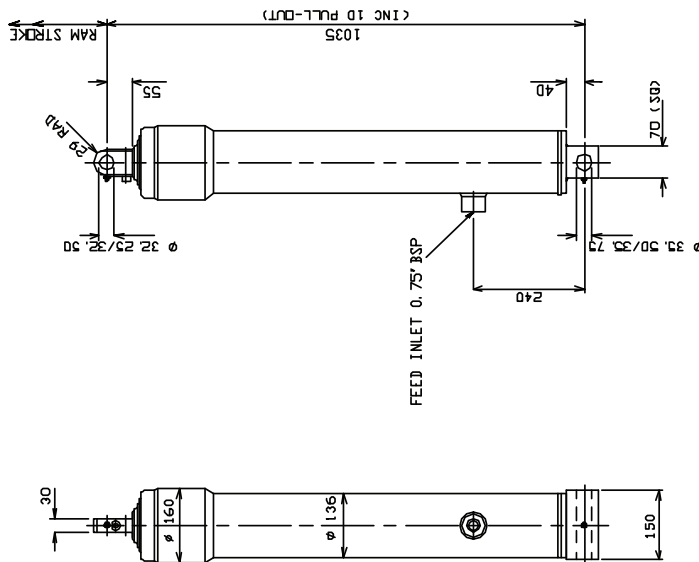
SEAL KIT KCS11/3

BODY AND PAYLOAD IS FOR TWIN RAMS @ 150 BAR  
PIVOT LENGTHS SHOWN GIVE 48° TIP

BODY LENGTH		7500	7250	7000	6750	6500	6250	6000	□/HANG
16			16	17	17.5	19	20	21	200
17			18	19	19	20	21	23	400
18			19	20	21	22	24	25	600



NOTE: MANUFACTURERS PART No. STAMPED ON BASE EYE IS CS11EE402970



NOTE: INTERMEDIATE TUBES HARDCHROMED

STAGES	4
SWEEP VOLUME	19.25 l
TOTAL STROKE	2970 MM
OPERATING PRESSURE	135 bar
MAXIMUM PRESSURE	150 bar
CYLINDER WEIGHT DRY	68 kg

DIMENSIONS IN MILLIMETRES UNLESS STATED OTHERWISE

CYLINDER ASSEMBLY CS114443

SEAL KIT KCS11/4 MAX LOAD 25 TONNE



BODY AND PAYLOAD IS FOR TWIN RAMS @ 150 BAR  
PIVOT LENGTHS SHOWN GIVE 48" TIP

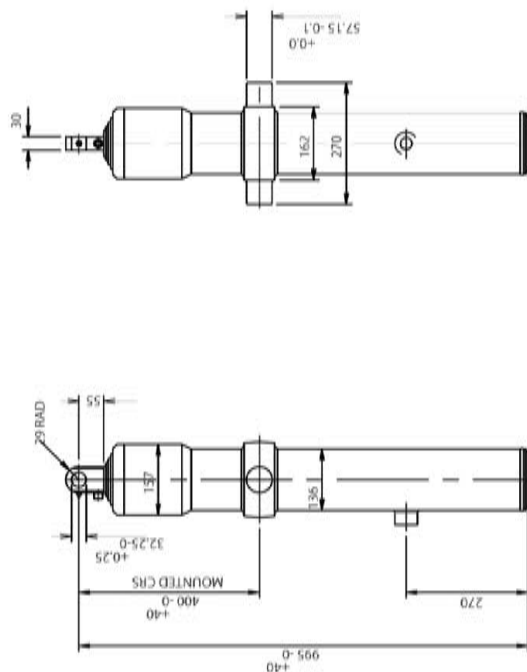
BODY LENGTH									
7500	7250	7000	6750	6500	6250	6000	O/HANG		
16	16	17	17.5	19	20	21	200		
17	18	19	19	20	21	23	400		
18	19	20	21	22	24	25	600		

NOTE: MANUFACTURERS PART No. STAMPED ON BASE IS CS110E402871

SEAL KIT KCS1 1/4

MAX LOAD

25 TONNE



NOTE: INTERMEDIATE TUBES HARD-CHROMED

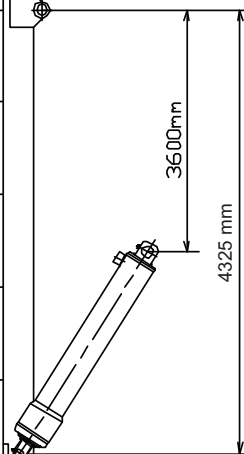
STAGES	4
SWEEP VOLUME	19.25 l
TOTAL STROKE	2871 MM
OPERATING PRESSURE	150 bar
MAXIMUM PRESSURE	175 bar
CYLINDER WEIGHT DRY	68 kg

DIMENSIONS IN MILLIMETRES UNLESS STATED OTHERWISE

CYLINDER ASSEMBLY CS114443T

**BODY LENGTH**

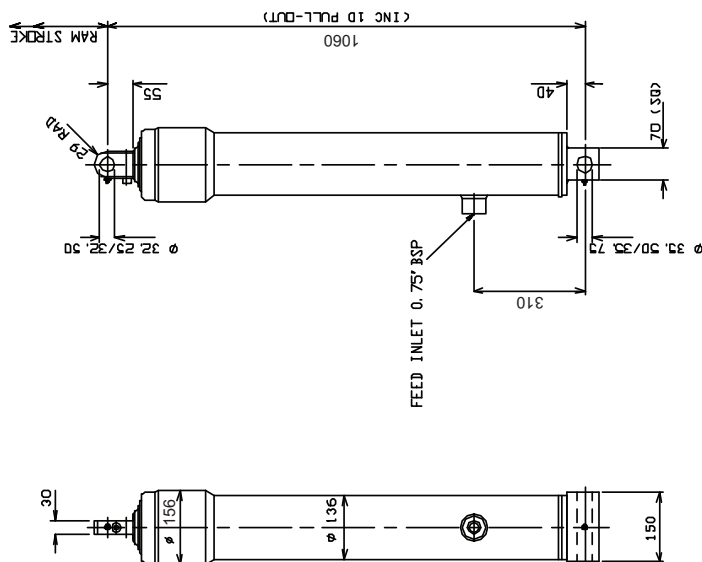
BUDDY LENGTH									
7500	7250	7000	6750	6500	6250	6000	□/ HANG		
16	16	17	17.5	19	20	21	200		
17	18	19	19	20	21	23	400		
18	19	20	21	22	24	25	600		



DIMENSIONS IN MILLIMETRES UNLESS STATED OTHERWISE

SEAL KIT KCS11/4	MAX LOAD	25 TONNE
------------------	----------	----------

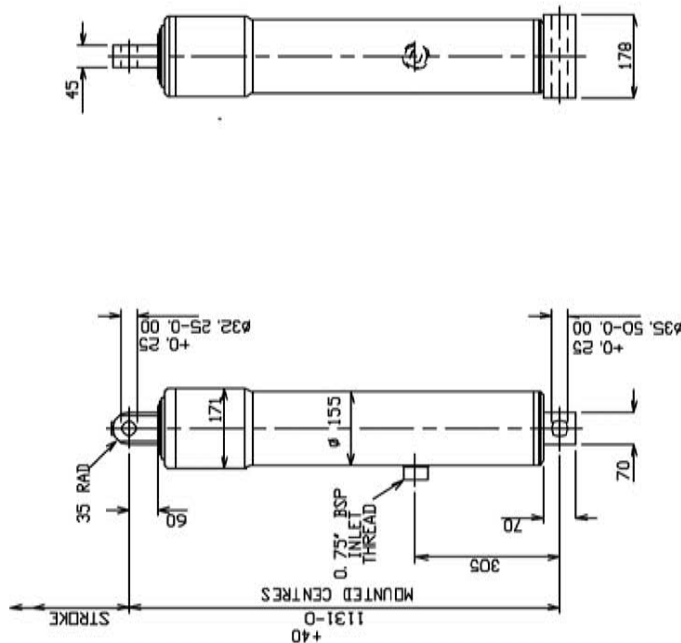
CYLINDER ASSEMBLY	CS11EE297
-------------------	-----------



NOTE : INTERMEDIATE TUBES HARDCHROMED

STAGES	4
SWEPT VOLUME	19.6 l
TOTAL STROKE	2971 mm
OPERATING PRESSURE	135 bar
MAXIMUM PRESSURE	150 bar
CYLINDER WEIGHT DRY	70 kg





\* Intermediate tubes hard chromed.

STAGES	3
SWEPT VOLUME	26 l
TOTAL STROKE	2419 MM
OPERATING PRESSURE	135 bar
MAXIMUM PRESSURE	150 bar
CYLINDER WEIGHT DRY	83 kg

DIMENSIONS IN MILLIMETRES UNLESS STATED OTHERWISE

CYLINDER ASSEMBLY CS13EE241

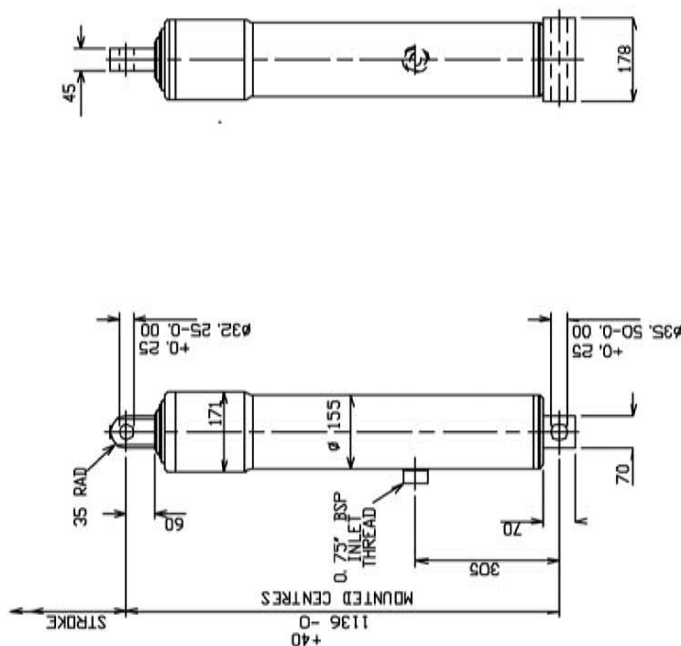
BODY AND PAYLOAD FOR TWIN RAMS @ 150 BAR

PIVOT LENGTHS SHOWN GIVE 48° TIP

		BODY LENGTH							
		6000	6250	6500	6750	7000	7250	7500	Ø/HANG
32	30	29	28	26	27	25	24	200	
34	32	30	29	27	26	25	23	300	
35	33	31	30	28	27	26	24	400	
35	35	33	31	29	28	27	25	500	

SEAL KIT KCS13/3

MAX LOAD 35 TONNE



\* Intermediate tubes hard chromed.

STAGES	4
SWEPT VOLUME	27 l
TOTAL STROKE	3241 mm
OPERATING PRESSURE	135 bar
MAXIMUM PRESSURE	150 bar
CYLINDER WEIGHT DRY	89 kg

DIMENSIONS IN MILLIMETRES UNLESS STATED OTHERWISE

CYLINDER ASSEMBLY	CS13EE324
-------------------	-----------

BODY AND PAYLOAD FOR TWIN RAMS @ 150 BAR

PIVOT LENGTHS SHOWN GIVE 48° TIP

BODY LENGTH		6500mm	6750mm	7000mm	7250mm	7500mm	7750mm	8000mm	Ø/HANG
29	28	26	25	24	23	22	21	20	200
30	29	27	26	25	24	23	22	21	300
31	30	28	27	26	25	24	23	22	400
33	31	29	28	27	26	25	24	23	500

SEAL KIT KCS13/4	MAX LOAD	33 TONNE
------------------	----------	----------



STAGES	3
SWEPT VOLUME	11.5 l
TOTAL STROKE	2159 MM
OPERATING PRESSURE	135 bar
MAXIMUM PRESSURE	150 bar
CYLINDER WEIGHT	48 kg
DRY	

ALL DIMENSIONS IN MILLIMETRES UNLESS STATED OTHERWISE

CYLINDER ASSEMBLY	CS10EE215
-------------------	-----------

BODY LENGTH					
	3300	3400	3500	3600	D/HANG
angle	tonne				
	51°	49°	47°	47°	200
		51°	49°	47°	300
		53°	51°	49°	400

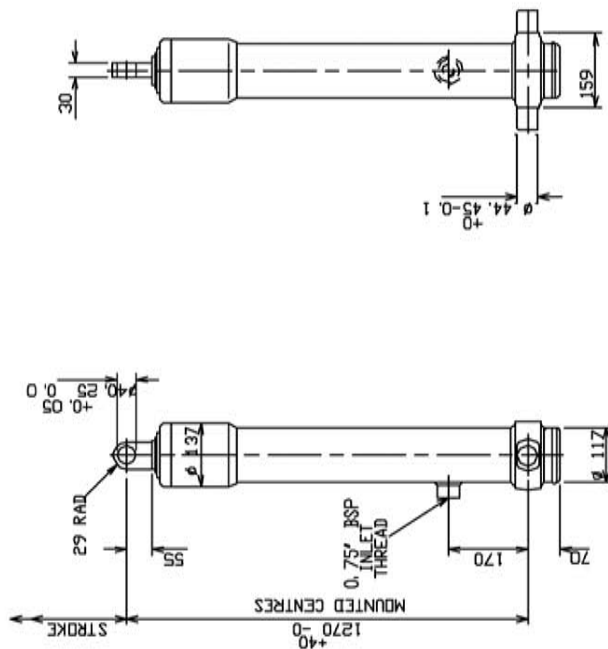
BOTTOM PIVOT 500MM FROM FOR

SEAL KIT KCS10/3

MAX LOAD	14 TONNE
----------	----------

ALL DIMENSIONS IN MILLIMETRES UNLESS STATED OTHERWISE

CYLINDER ASSEMBLY	CS10EE215
-------------------	-----------



NOTE : INTERMEDIATE TUBES ARE HARDCHROMED

BODY LENGTH					
angle	4400	4600	4800	5000	□/HANG
53°	12	12	11		200
		51°	12		300
		53°	13	12	400
			47°	12	

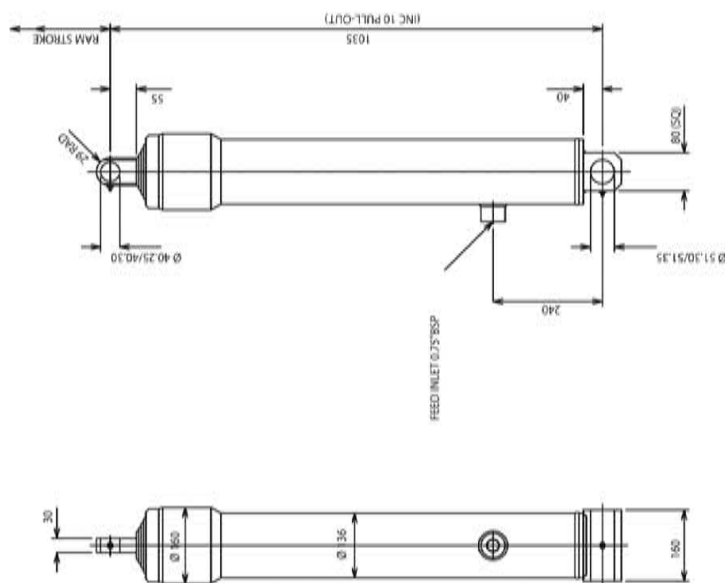
BOTTOM PIVOT 600MM FROM FOB

STAGES	3
SWEPT VOLUME	17 l
TOTAL STROKE	3209 MM
OPERATING PRESSURE	135 bar
MAXIMUM PRESSURE	150 bar
CYLINDER WEIGHT DRY	74 kg

DIMENSIONS IN MILLIMETRES UNLESS STATED OTHERWISE

CYLINDER ASSEMBLY	CS100E320
-------------------	-----------

SEAL KIT KCS10/3	MAX LOAD	12 TONNE
------------------	----------	----------



NOTE : INTERMEDIATE TUBES HARDCHROMED

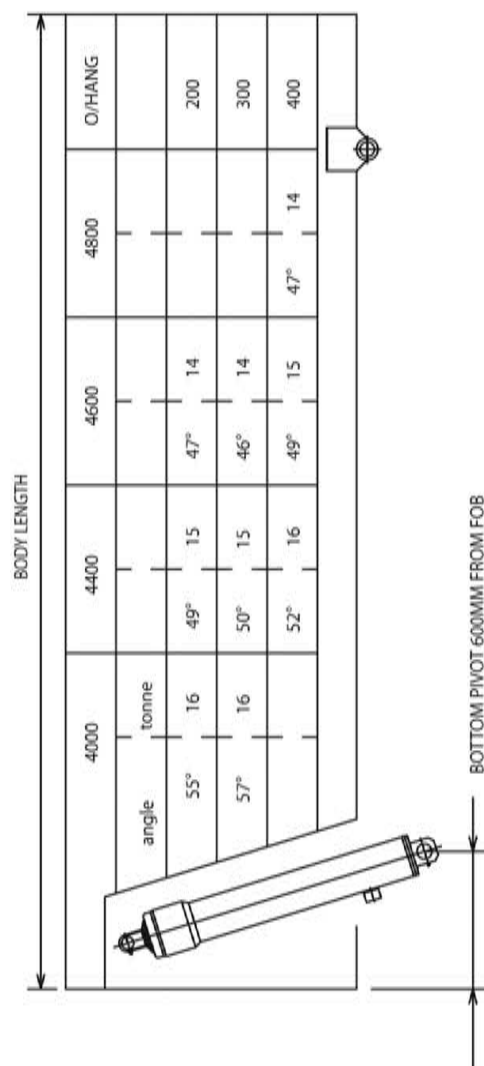
STAGES	4
SWEPT VOLUME	19.25 l
TOTAL STROKE	2970 mm
OPERATING PRESSURE	135 bar
MAXIMUM PRESSURE	150 bar
CYLINDER WEIGHT DRY	68 kg

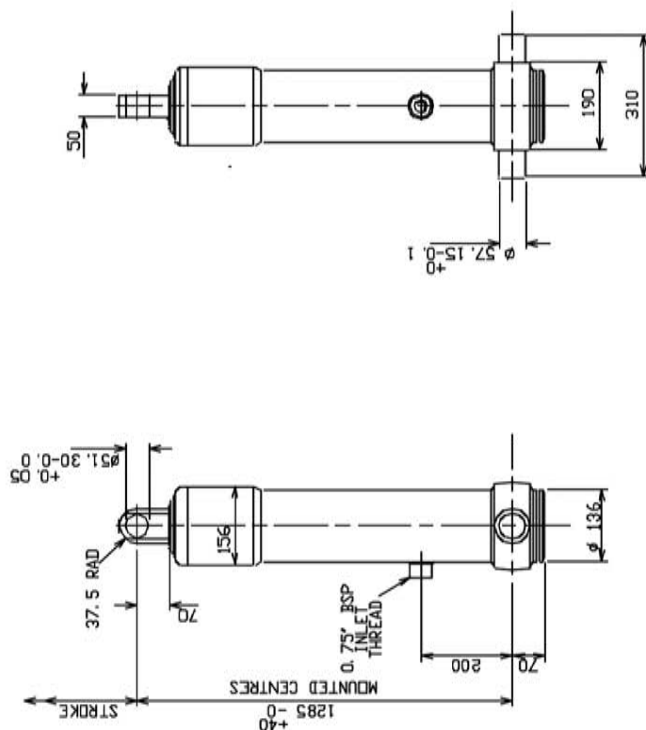
DIMENSIONS IN MILLIMETRES UNLESS STATED OTHERWISE

CYLINDER ASSEMBLY	CS114443
-------------------	----------

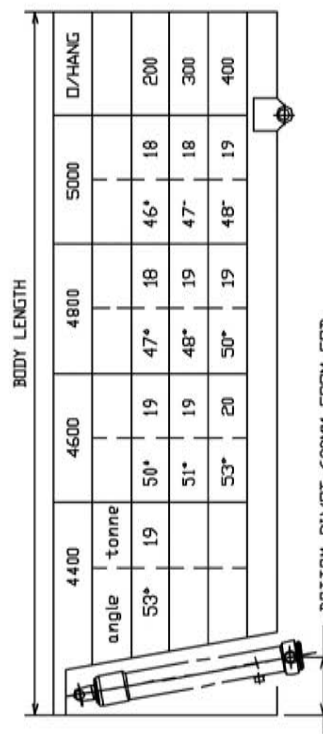
MAX LOAD	16 TONNE
----------	----------

SEAL KIT KCS11/4





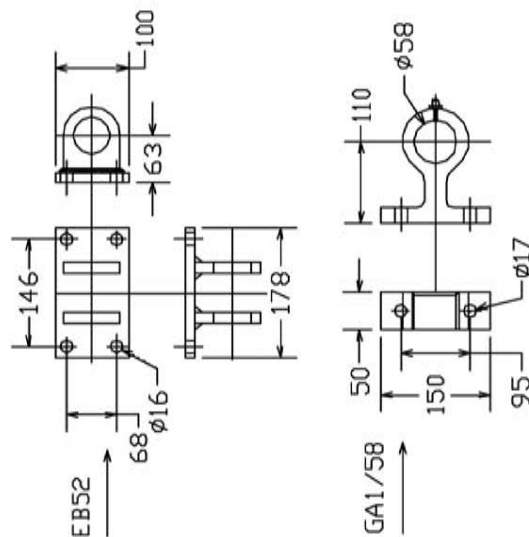
NOTE : INTERMEDIATE TUBES ARE HARD-RODDED



SEAL KIT KCS11/3

MAX LOAD 18 TONNE PLUS

## RB KIT COMPONENTS



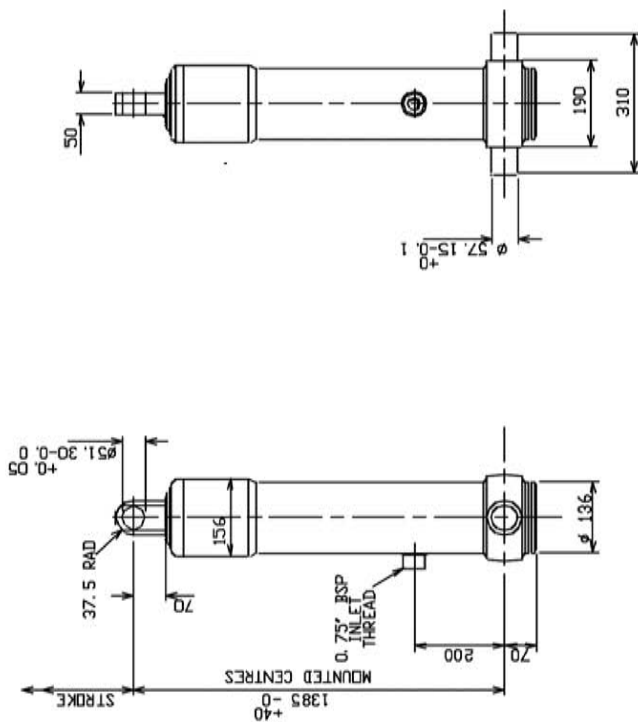
STAGES	3
SWEPT VOLUME	25 l
TOTAL STROKE	3194 MM
OPERATING PRESSURE	135 bar
MAXIMUM PRESSURE	150 bar
CYLINDER WEIGHT DRY	86 kg

DIMENSIONS IN MILLIMETRES UNLESS STATED OTHERWISE

CYLINDER ASSEMBLY

CS110E319





NOTE : INTERMEDIATE TUBES ARE HARDCHROMED

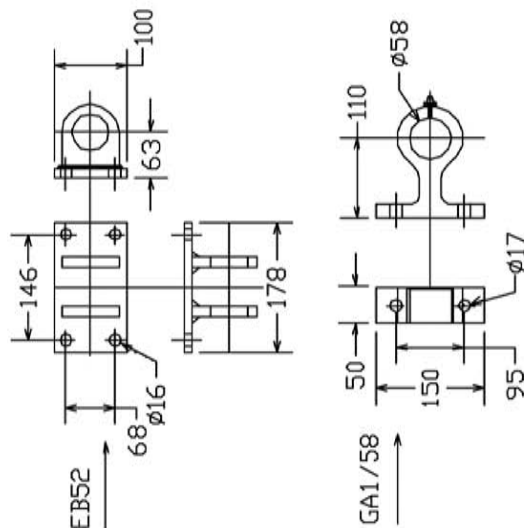
		BODY LENGTH					
		4600	4800	5000	5200	D/HANG	
angle	tonne						
54°	19	19	49°	18	46°	18	200
56°	20	53°	19	50°	48°	19	300
		55°	20	52°	49°	19	400

BOTTOM PIVOT 600MM FROM FOB

SEAL KIT KCS11/3

MAX LOAD 18 TONNE PLUS

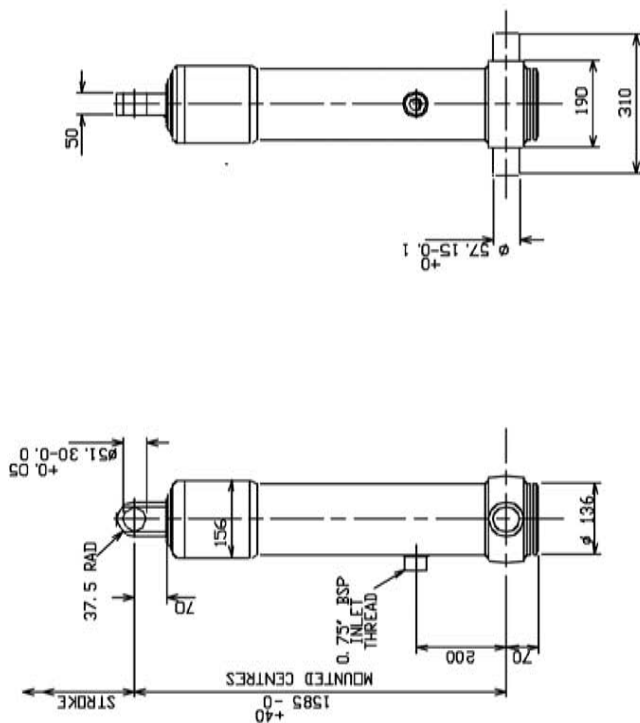
## RB KIT COMPONENTS



STAGES	3
SWEPT VOLUME	27 l
TOTAL STROKE	3494 mm
OPERATING PRESSURE	135 bar
MAXIMUM PRESSURE	150 bar
CYLINDER WEIGHT DRY	89 kg

DIMENSIONS IN MILLIMETRES UNLESS STATED OTHERWISE

CYLINDER ASSEMBLY CS110E349



NOTE : INTERMEDIATE TUBES ARE HARDCHROMED

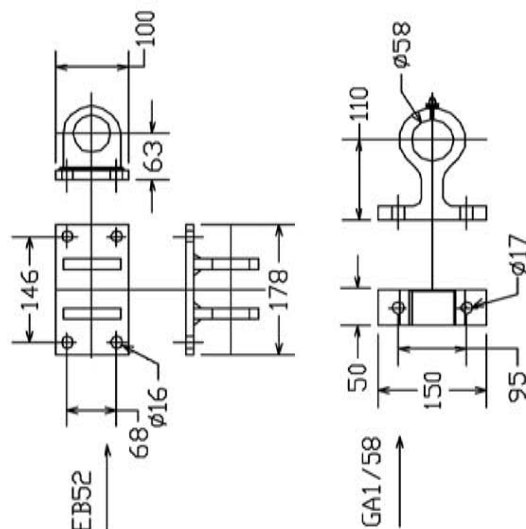
		BODY LENGTH					
		5400	5600	5800	6000	D/HANG	
angle	tonne	19	19	19	18	47°	18
53°	19	51°	49°	48°	47°	18	200
		52°	50°	49°	47°	18	300
		53°	51°	50°	48°	19	400

BOTTOM PIVOT 600MM FROM FOB

SEAL KIT KCS11/3

MAX LOAD 18 TONNE PLUS

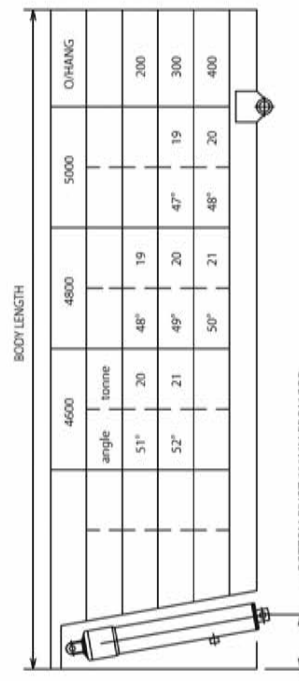
## RB KIT COMPONENTS



STAGES	3
SNEPT VOLUME	32 l
TOTAL STROKE	4094 mm
OPERATING PRESSURE	135 bar
MAXIMUM PRESSURE	150 bar
CYLINDER WEIGHT DRY	95 kg

DIMENSIONS IN MILLIMETRES UNLESS STATED OTHERWISE

CYLINDER ASSEMBLY CS110E409

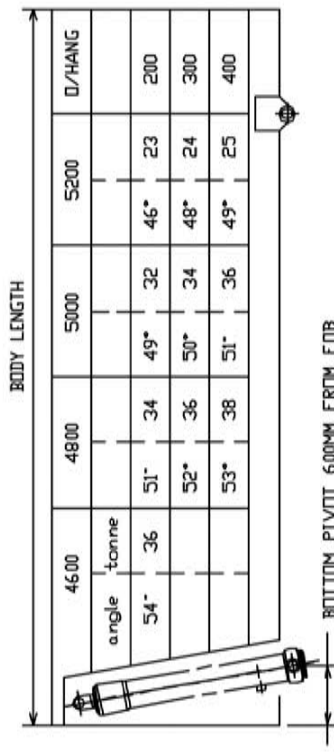


STAGES	4
SWEEP VOLUME	27 l
TOTAL STROKE	3241 MM
OPERATING PRESSURE	135 bar
MAXIMUM PRESSURE	150 bar
CVI INTER WEIGHT DAY	89 kg

CYLINDER ASSEMBLY

MAX LOAD	19 TONNE PLUS
----------	---------------

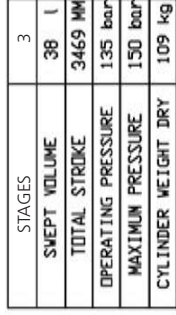
SEAL KIT KCS13/4



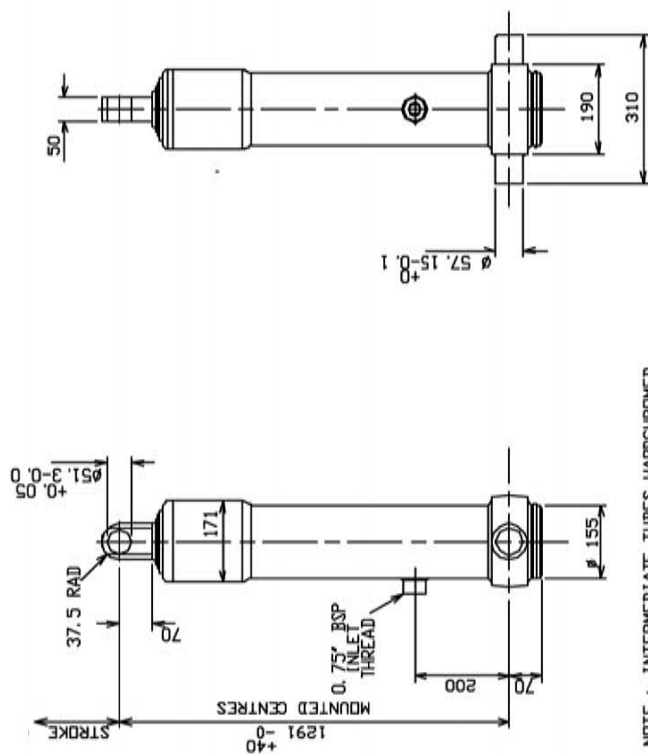
BOTTOM PIVOT 600MM FROM FOB

CYLINDER ASSEMBLY	CS13DE346
-------------------	-----------

DIMENSIONS IN MILLIMETRES UNLESS STATED OTHERWISE



DIMENSIONS IN MILLIMETRES UNLESS STATED OTHERWISE

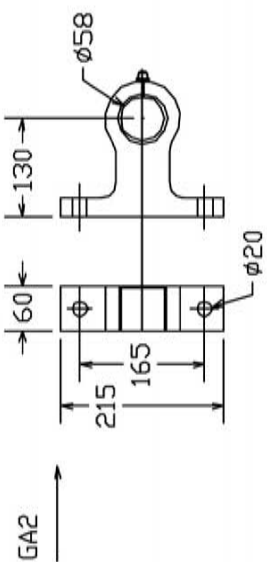
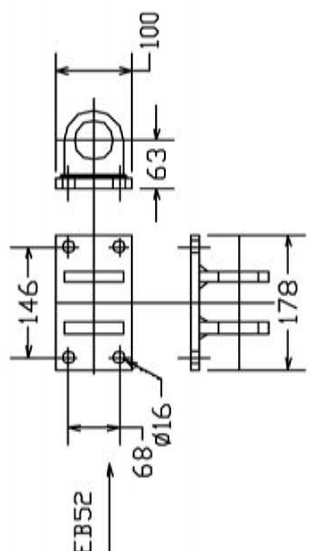


NOTE: INTERMEDIATE TUBES HARDCHROMED

BODY LENGTH		5600	5800	6000	6200	D/HANG
angle	tonne	52°	50°	48°	46°	200
		25	24	24	23	200
		26	25	24	24	300
		27	26	25	25	400
		28	27	26	26	400

BOTTOM PIVOT 600MM FROM FOB

RB KIT COMPONENTS

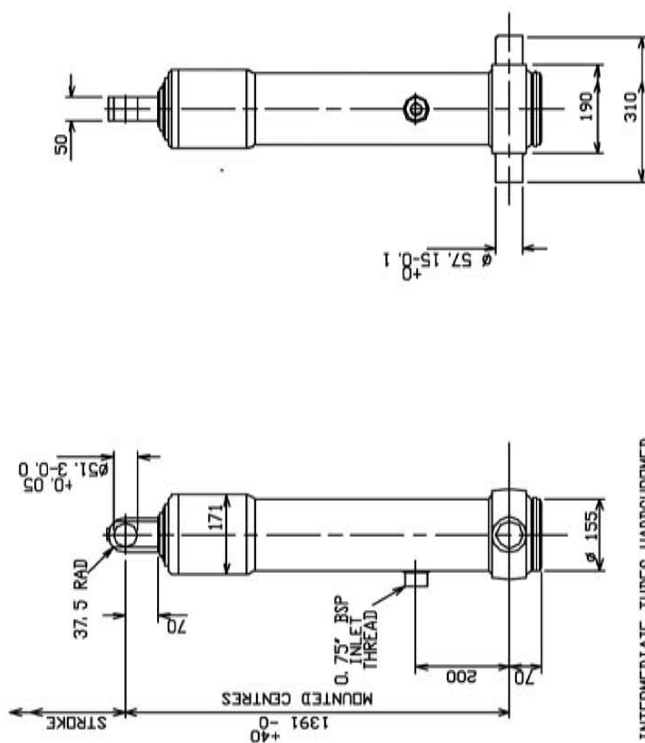


STAGES	4
SWEPT VOLUME	40 l
TOTAL STROKE	4241 MM
OPERATING PRESSURE	135 bar
MAXIMUM PRESSURE	150 bar
CYLINDER WEIGHT DRY	112 kg

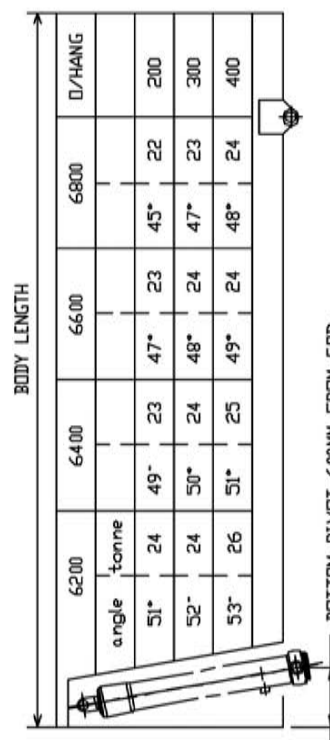
DIMENSIONS IN MILLIMETRES UNLESS STATED OTHERWISE

CYLINDER ASSEMBLY	CS130E424
-------------------	-----------

SEAL KIT KCS13/4	MAX LOAD	24 TONNE	+
------------------	----------	----------	---



NOTE: INTERMEDIATE TUBES HARDCHROMED

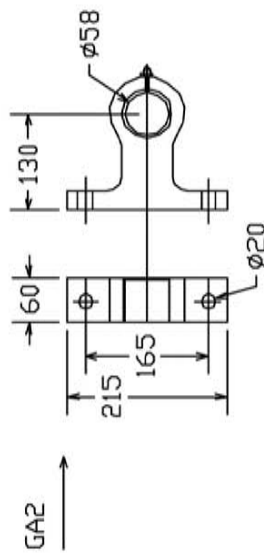
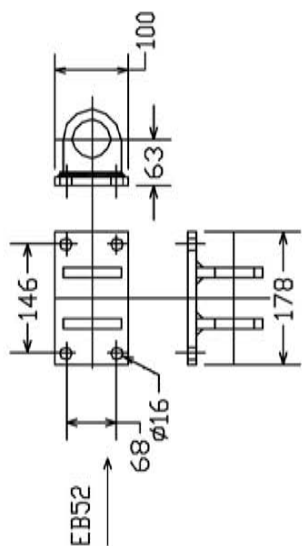


BOTTOM PIVOT 600MM FROM FOB

SEAL KIT KCS13/4

MAX LOAD 24 TONNE +

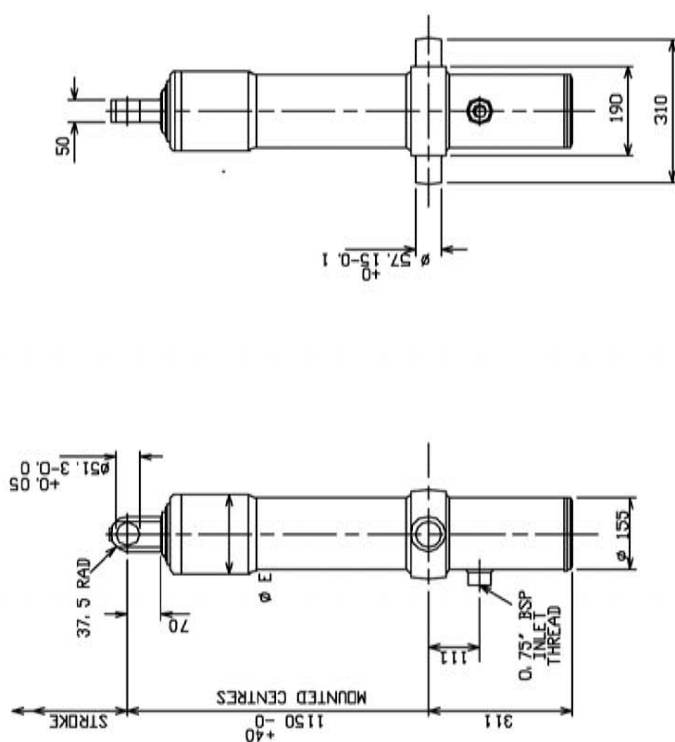
### RB KIT COMPONENTS



STAGES	4
SWEPT VOLUME	44 l
TOTAL STROKE	4641 MM
OPERATING PRESSURE	135 bar
MAXIMUM PRESSURE	150 bar
CYLINDER WEIGHT DRY	119 kg

DIMENSIONS IN MILLIMETRES UNLESS STATED OTHERWISE

CYLINDER ASSEMBLY CS130E464



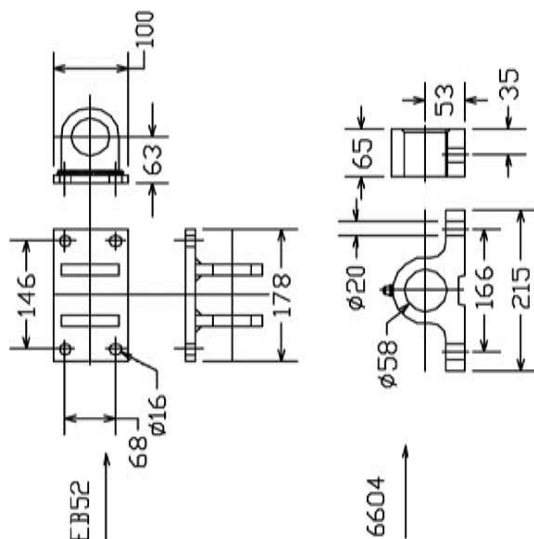
BODY LENGTH		D/HANG			
		6200	6400	6600	6800
angle	tonne	24	23	23	22
51°	24	49°	23	47°	23
52°	24	50°	24	48°	23
53°	26	51°	25	49°	24
					48°

BOTTOM PIVOT 600MM FROM FOB

SEAL KIT KCS13/4

MAX LOAD 24 TONNE +

## RB KIT COMPONENTS



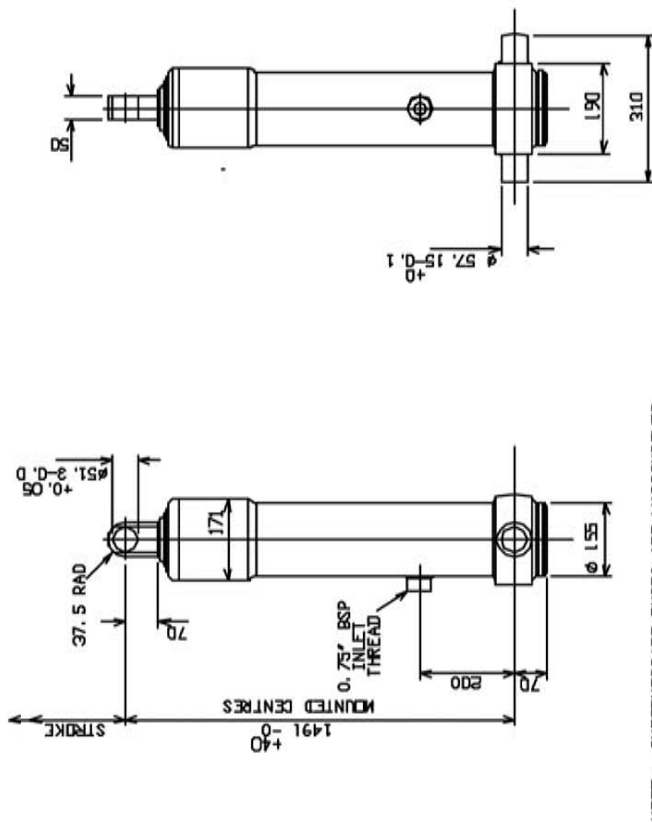
NOTE 1: INTERMEDIATE TUBES HARDCHROMED

STAGES	4
SWEPT VOLUME	44 l
TOTAL STROKE	4641 mm
OPERATING PRESSURE	135 bar
MAXIMUM PRESSURE	150 bar
CYLINDER WEIGHT DRY	119 kg

DIMENSIONS IN MILLIMETRES UNLESS STATED OTHERWISE

CYLINDER ASSEMBLY CS130E464H





NOTE: INTERMEDIATE TUBES ARE HARDCHROMED

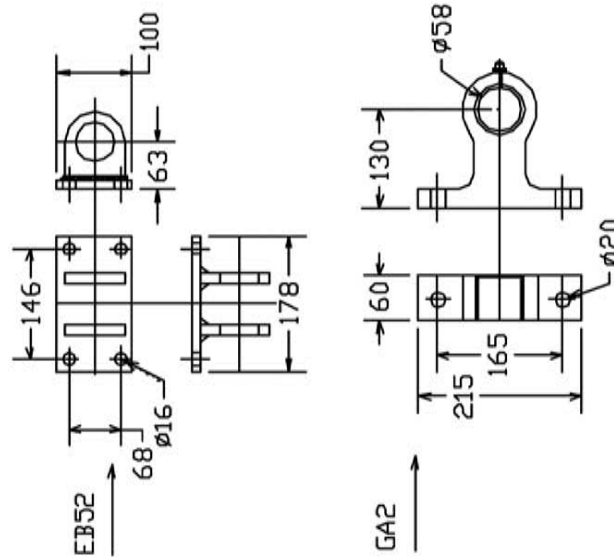
		BODY LENGTH					
		6600	6800	7000	7200	D/HANG	
angle	tonne	23	50°	22	48°	22	200
52°	24	51°	23	49°	23	47°	300
54°	25	52°	24	50°	23	48°	400

BOTTOM PIVOT 640MM FROM FOB

SEAL KIT KCS13/4

MAX LOAD 24 TONNE +

### RB KIT COMPONENTS

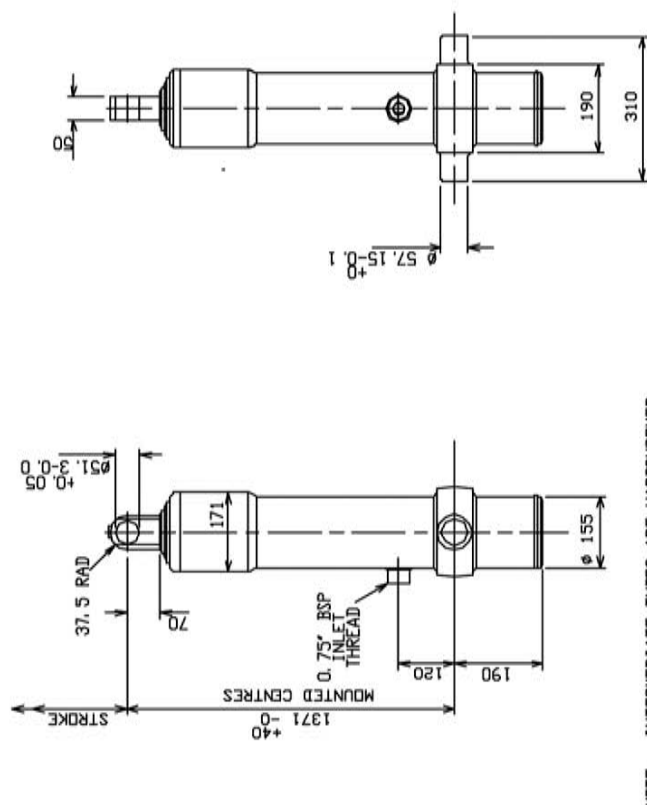


		STAGES	
		4	
		47	1
		5043	M
		135	bar
		150	bar
		126	kg

DIMENSIONS IN MILLIMETRES UNLESS STATED OTHERWISE

CYLINDER ASSEMBLY CS130E504





NOTE: INTERMEDIATE TUBES ARE HARDCHROMED

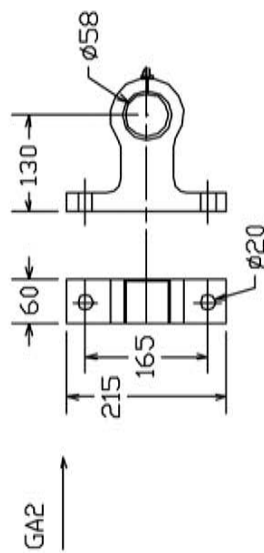
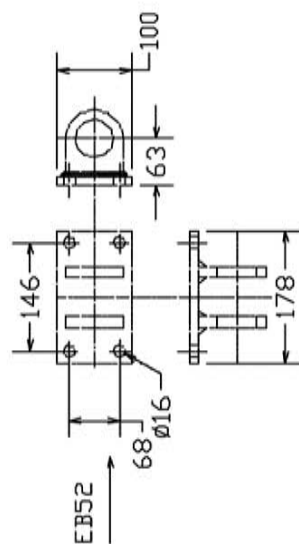
		BODY LENGTH								
		6600	6800	7000	7200	D/HANG				
angle	tonne	52°	23	50°	22	48°	22	47°	22	200
53°	24	51°	23	49°	23	48°	23	47°	22	300
54°	25	52°	24	50°	23	48°	23	47°	22	400

BOTTOM PIVOT 600MM FROM FOB

SEAL KIT KCS13/4

MAX LOAD 24 TONNE +

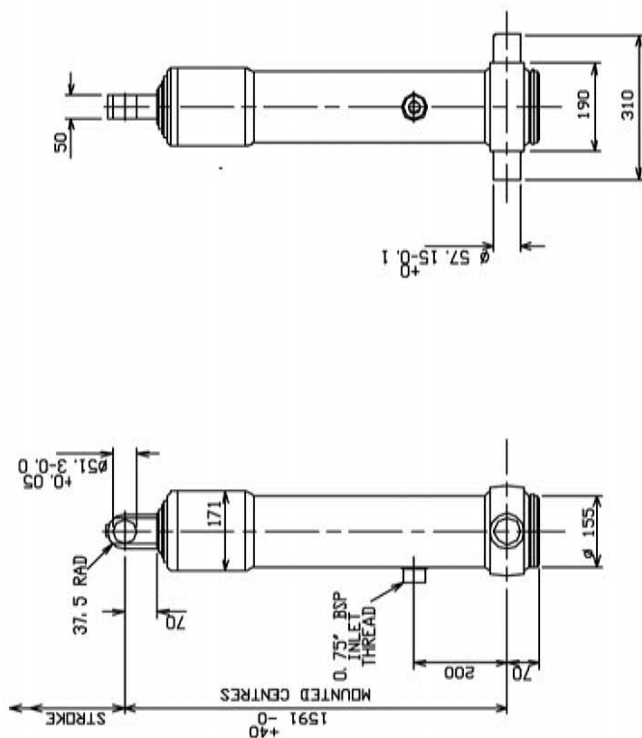
## RB KIT COMPONENTS



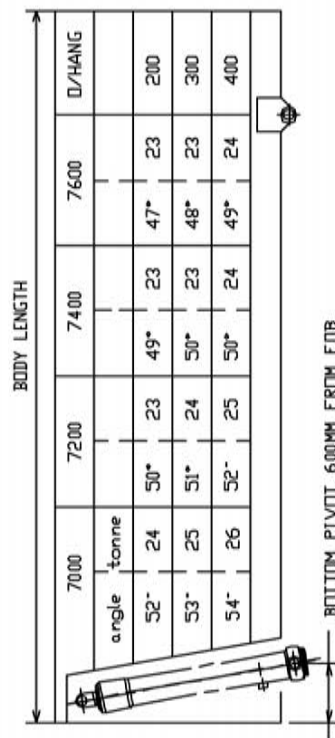
STAGES	4
SWEPT VOLUME	47 l
TOTAL STROKE	5041 MM
OPERATING PRESSURE	135 bar
MAXIMUM PRESSURE	150 bar
CYLINDER WEIGHT DRY	126 kg

DIMENSIONS IN MILLIMETRES UNLESS STATED OTHERWISE

CYLINDER ASSEMBLY CS130E504H



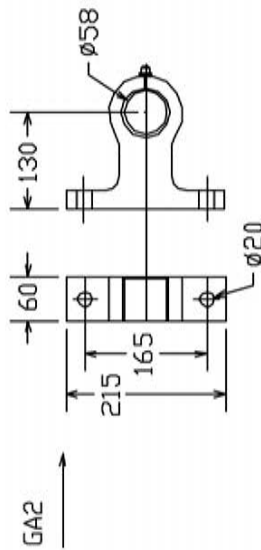
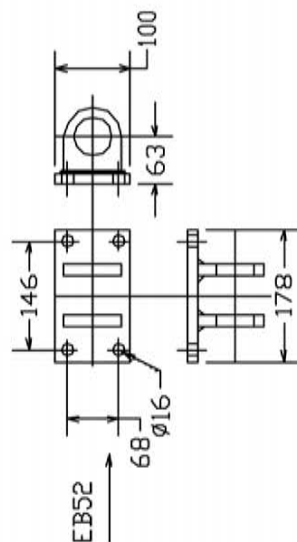
NOTE : INTERMEDIATE TUBES ARE HARDCHROMED



SEAL KIT KCS13/4

MAX LOAD 24 TONNE +

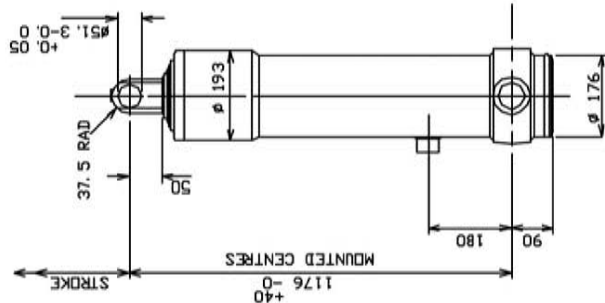
## RB KIT COMPONENTS



STAGES	4
SWEPT VOLUME	51 l
TOTAL STROKE	5441 MM
OPERATING PRESSURE	135 bar
MAXIMUM PRESSURE	150 bar
CYLINDER WEIGHT DRY	134 kg

DIMENSIONS IN MILLIMETRES UNLESS STATED OTHERWISE

CYLINDER ASSEMBLY CS13DE544



NOTE : INTERMEDIATE TUBES ARE HARDCHROMED

BODY LENGTH

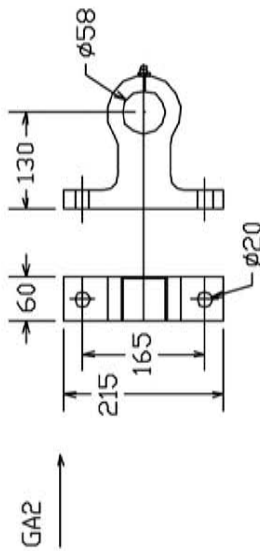
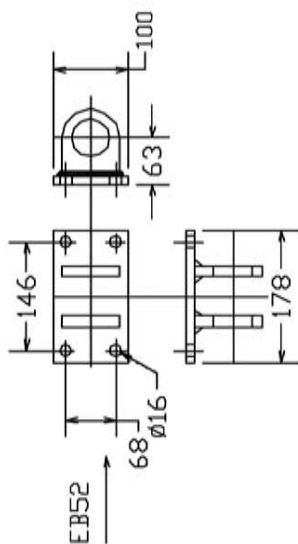
		6200	6400	6600	6800	D/HANG	
angle	tonne	53°	51°	48°	23	200	
		54°	27	51°	26	49°	25
				53°	29	51°	27
							700

BOTTOM PIVOT 600MM FROM FOB

SEAL KIT KCS15/5

MAX LOAD 30 TONNE

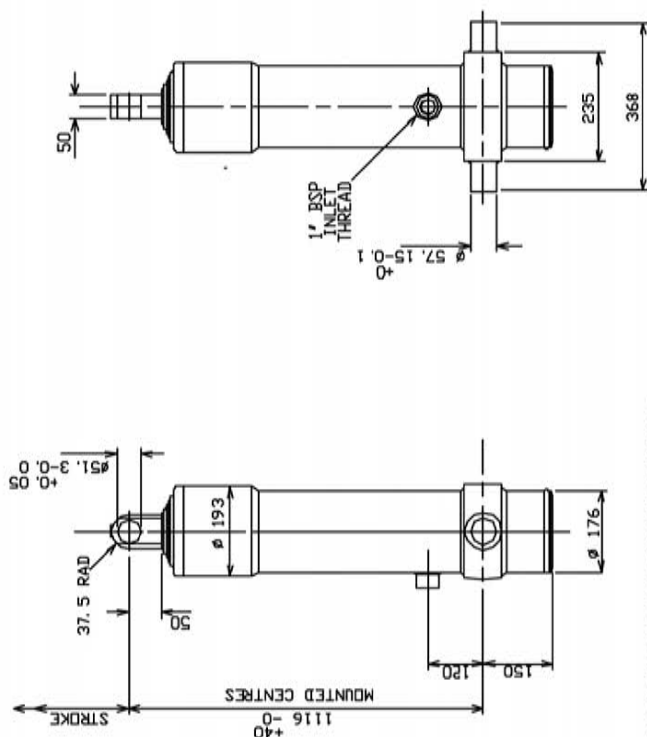
# RB KIT COMPONENTS



STAGES	5
SWEPT VOLUME	54 l
TOTAL STROKE	4778 MM
OPERATING PRESSURE	135 bar
MAXIMUM PRESSURE	150 bar
CYLINDER WEIGHT DRY	145 kg

DIMENSIONS IN MILLIMETRES UNLESS STATED OTHERWISE

CYLINDER ASSEMBLY CS150E477



NOTE : INTERMEDIATE TUBES ARE HARD-ROLLED

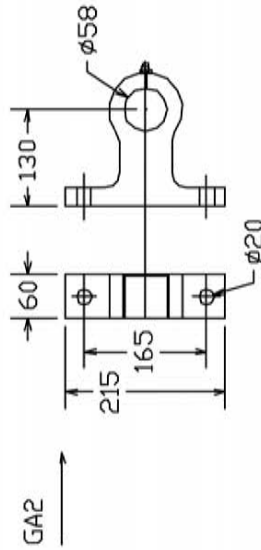
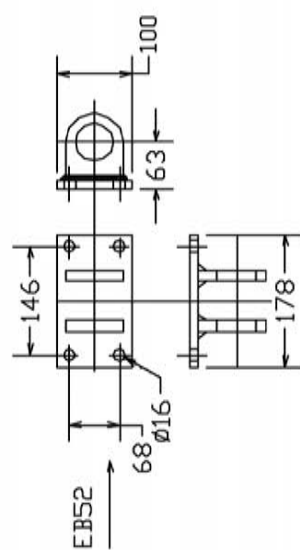
		BODY LENGTH					D/HANG	
angle	tonne	6200	6400	6600	6800			
53°	25		51°	24	48°	23		200
			54°	27	51°	26	49°	500
					53°	29	51°	700

BOTTOM PIVOT 600MM FROM FOB

SEAL KIT KCS15/5

MAX LOAD 30 TONNE

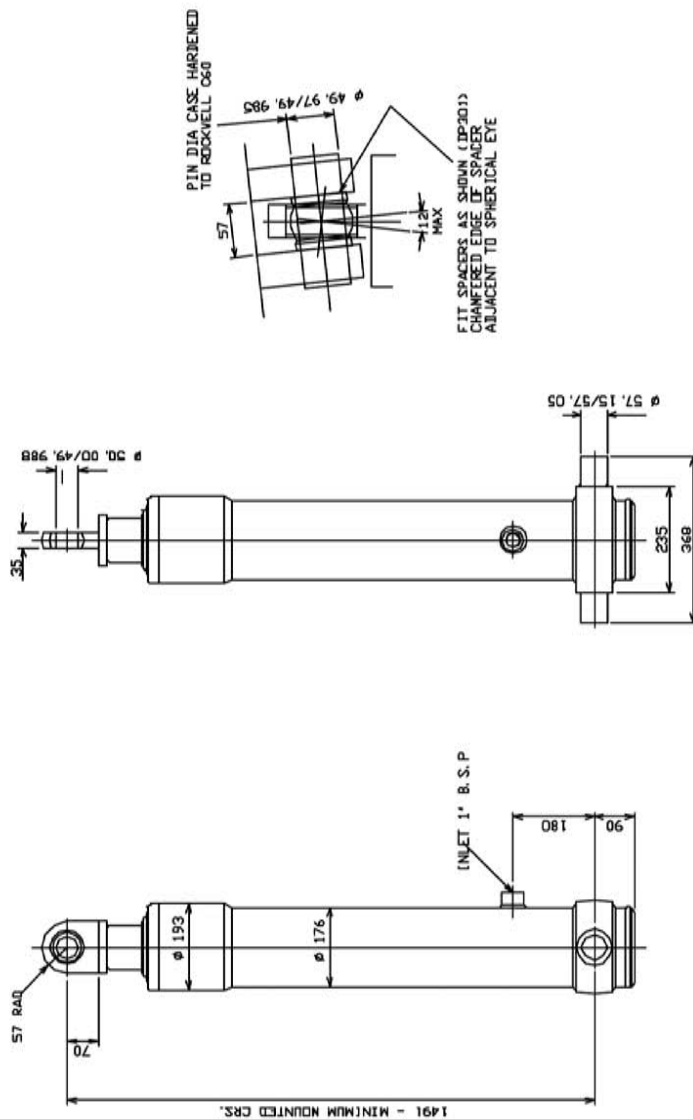
## RB KIT COMPONENTS



STAGES	5
SWEPT VOLUME	54 l
TOTAL STROKE	4778 MM
OPERATING PRESSURE	135 bar
MAXIMUM PRESSURE	150 bar
CYLINDER WEIGHT DRY	145 kg

DIMENSIONS IN MILLIMETRES UNLESS STATED OTHERWISE

CYLINDER ASSEMBLY CS150E477H



BODY LENGTH		6400	6600	6800	7000	D/HANG
angle	tonne					
51°	32	49°	32	47°	31	200
52°	33	50°	33	49°	32	300
53°	35	51°	34	49°	33	400

BOTTOM PIVOT 600MM FROM FOB

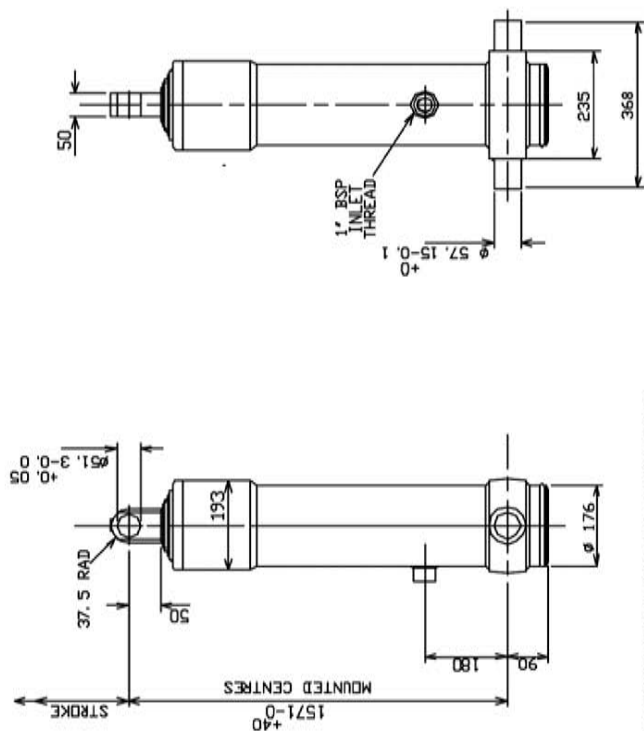
NOTE: INTERMEDIATE TUBES HARDCHROMED

STAGES	4
SWEPT VOLUME	61.5 l
TOTAL STROKE	4806 MM
OPERATING PRESSURE	135 bar
MAXIMUM PRESSURE	150 bar
CYLINDER WEIGHT DRY	164 kg

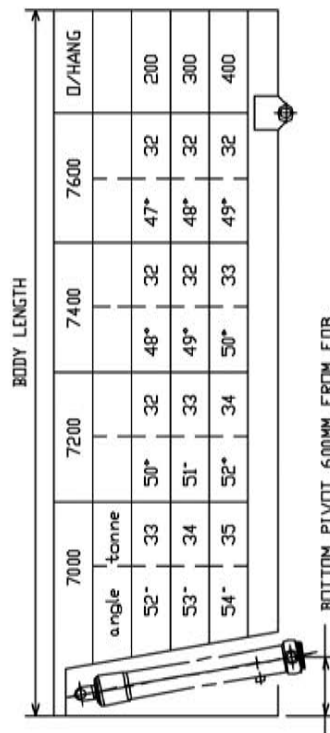
DIMENSIONS IN MILLIMETRES UNLESS STATED OTHERWISE

CYLINDER ASSEMBLY	CS150S480
-------------------	-----------

SEAL KIT KCS15/4	MAX LOAD	30 TONNE
------------------	----------	----------



NOTE: INTERMEDIATE TUBES ARE HARDCHROMED



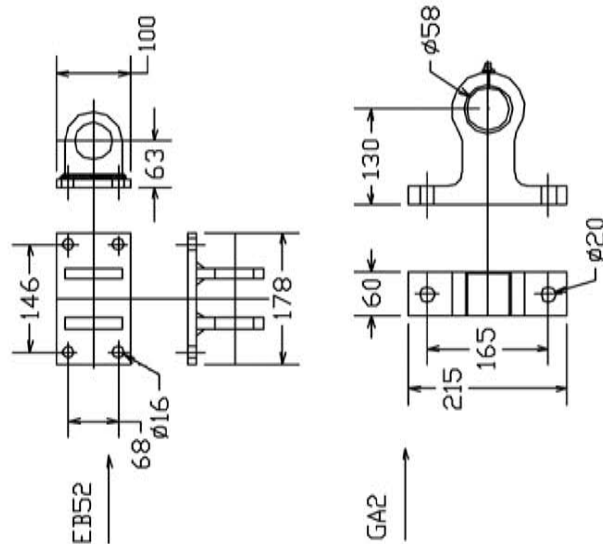
BOTTOM PIVOT 600MM FROM FOB

SEAL KIT KCS15/4

MAX LOAD

30 TONNE

# RB KIT COMPONENTS

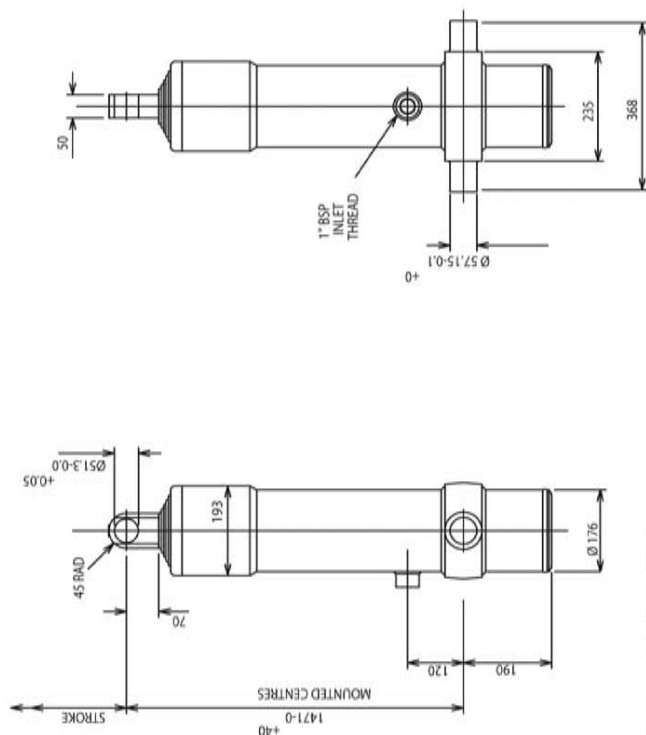


STAGES	4
SWEPT VOLUME	69 l
TOTAL STROKE	5406 MM
OPERATING PRESSURE	135 bar
MAXIMUM PRESSURE	150 bar
CYLINDER WEIGHT DRY	167 kg

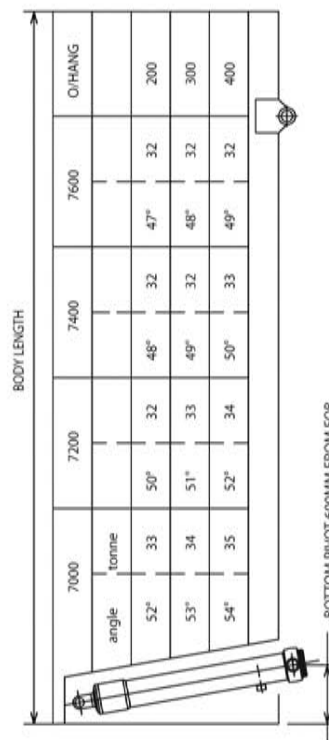
DIMENSIONS IN MILLIMETRES UNLESS STATED OTHERWISE

CYLINDER ASSEMBLY

CS150E540



NOTE: INTERMEDIATE TUBES ARE HARDCHROMIUM

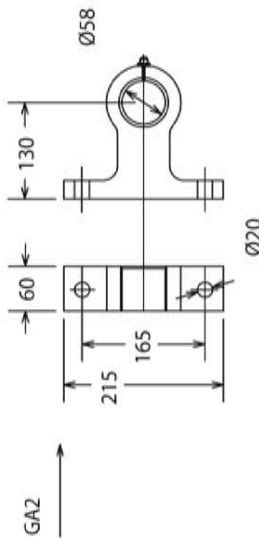
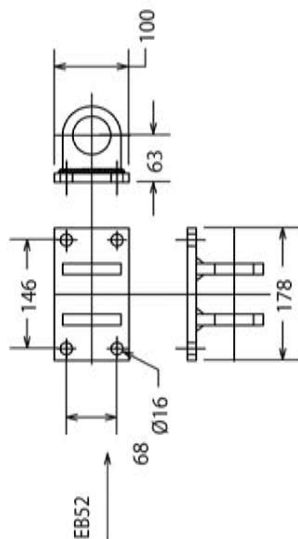


SEAL KIT KCS15/4

MAX LOAD

30 TONNE

RB KIT COMPONENTS



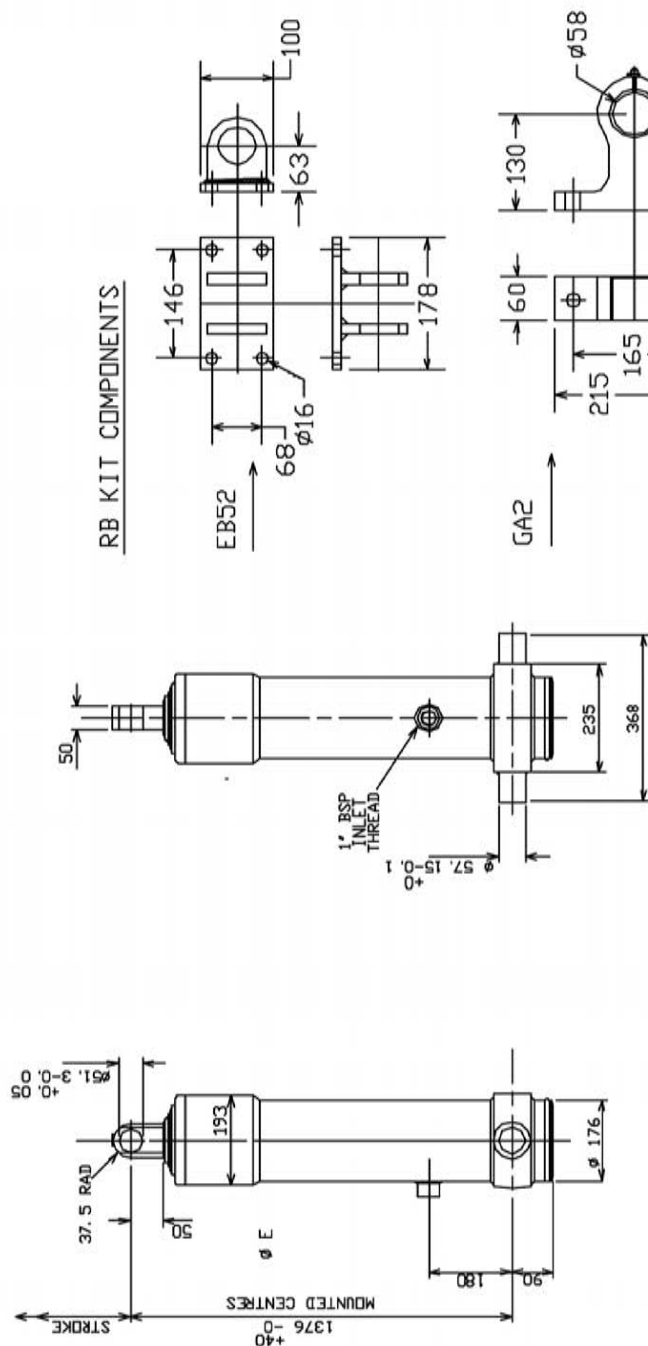
STAGES	4
SWEEP VOLUME	69 l
TOTAL STROKE	5406 mm
OPERATING PRESSURE	135 bar
MAXIMUM PRESSURE	150 bar
CYLINDER WEIGHT DRY	167 kg

DIMENSIONS IN MILLIMETRES UNLESS STATED OTHERWISE

CYLINDER ASSEMBLY

CS150E540H





RB KIT COMPONENTS

EB52

GA2

BODY LENGTH

angle	7800	8000	8200	8400	D/HANG
51°	23	22	22	21	200
53°	26	25	24	22	500
		27	26	25	700

BOTTOM PIVOT 600MM FROM FOB

NOTE: INTERMEDIATE TUBES HARDCHROMED

STAGES	5
SWEPT VOLUME	65 l
TOTAL STROKE	5778 mm
OPERATING PRESSURE	135 bar
MAXIMUM PRESSURE	150 bar
CYLINDER WEIGHT DRY	161 kg

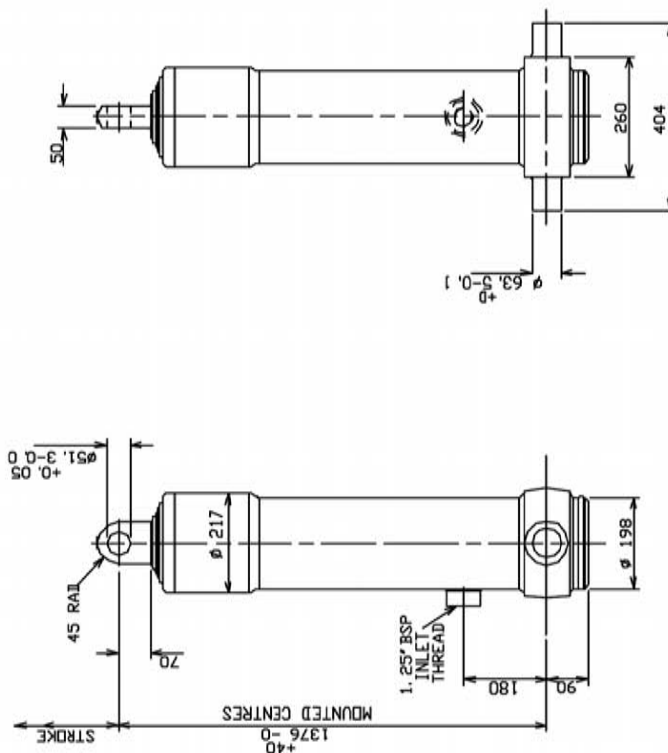
DIMENSIONS IN MILLIMETRES UNLESS STATED OTHERWISE

SEAL KIT KCS15/5

MAX LOAD 30 TONNE

CYLINDER ASSEMBLY CS150E577





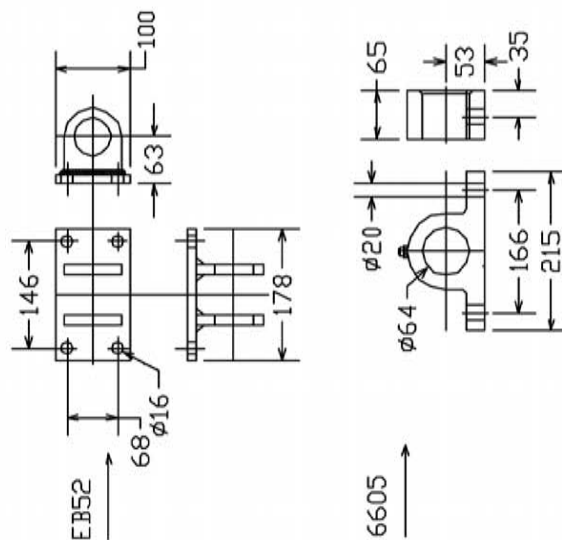
BODY LENGTH		7800	8000	8200	8400	D/HANG
angle	tonne	50°	50°	48°	47°	32
		35	34	33	32	200
		53°	52°	50°	49°	35
			53°	52°	50°	37
			40	39	37	700

BOTTOM PIVOT 600MM FROM FOB

SEAL KIT KCS17/5

MAX LOAD 40 TONNE

## RB KIT COMPONENTS



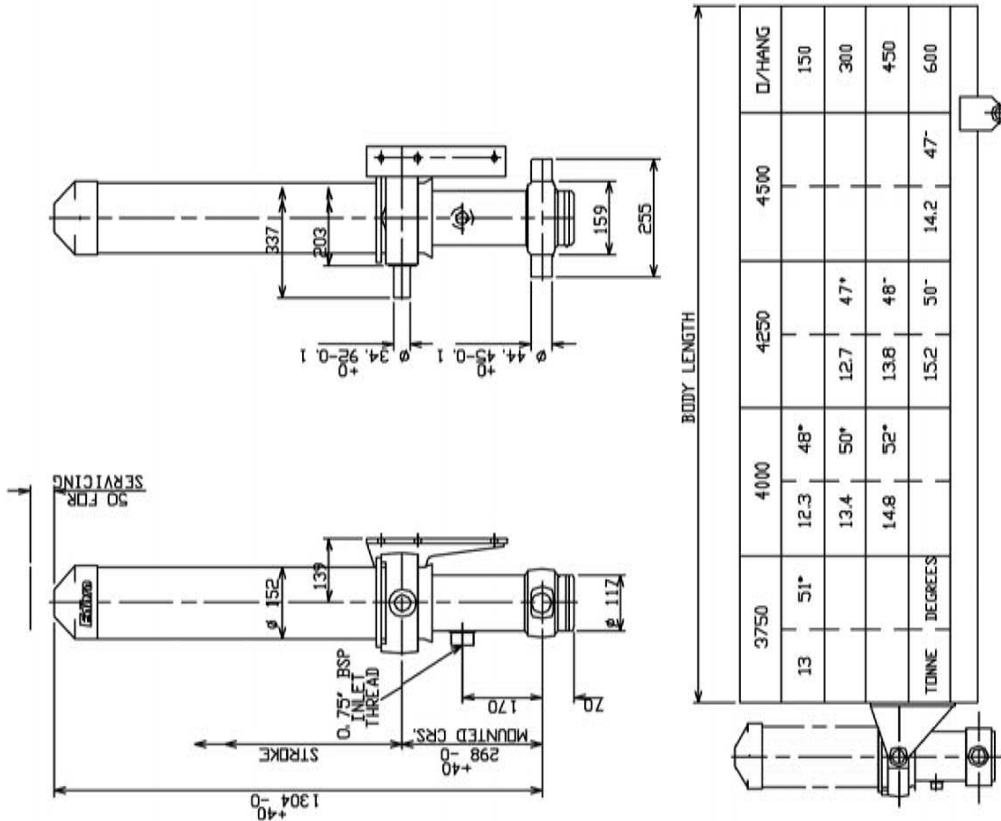
NOTE : INTERMEDIATE TUBES HARDCHROMED

STAGES	5
SWEPT VOLUME	86 l
TOTAL STROKE	5733 MM
OPERATING PRESSURE	135 bar
MAXIMUM PRESSURE	150 bar
CYLINDER WEIGHT DRY	209 kg

DIMENSIONS IN MILLIMETRES UNLESS STATED OTHERWISE

CYLINDER ASSEMBLY CS170E573





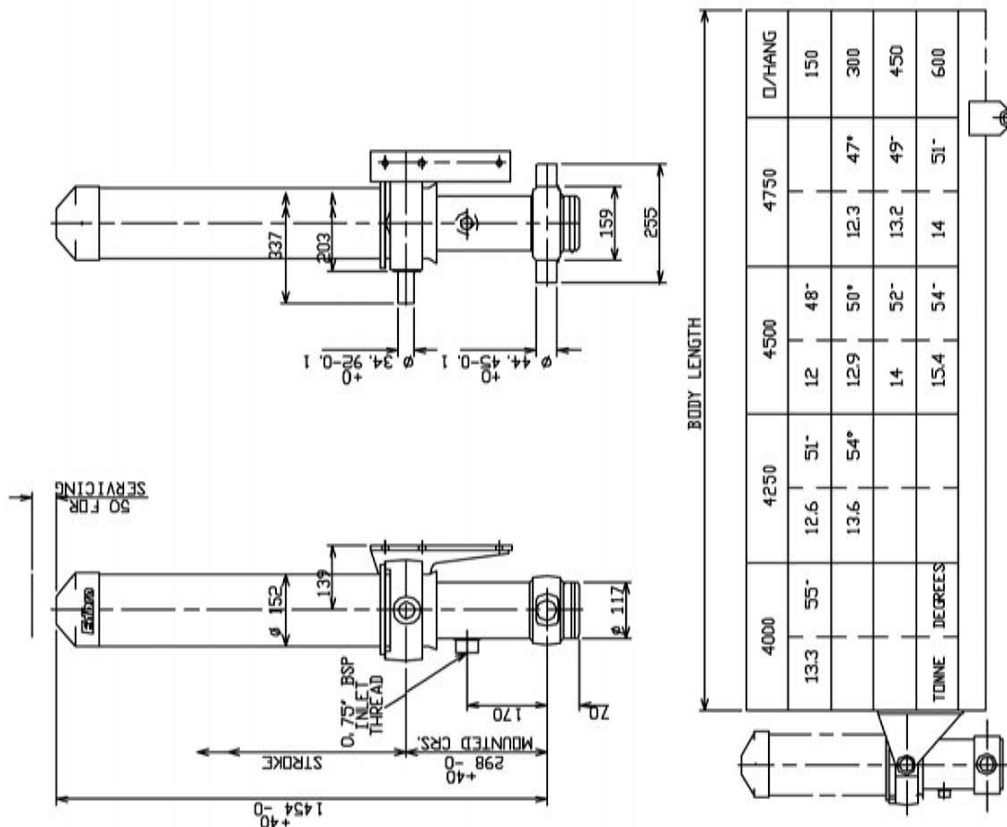
NOTE : INTERMEDIATE TUBES ARE HARDCHROMED

STAGES	3
SWEPT VOLUME	17 l
TOTAL STROKE	3209 mm
OPERATING PRESSURE	135 bar
MAXIMUM PRESSURE	150 bar
CYLINDER WEIGHT DRY	79 kg

DIMENSIONS IN MILLIMETRES UNLESS STATED OTHERWISE

CYLINDER ASSEMBLY	CS100O320
-------------------	-----------

SEAL KIT KCS10/3	MAX LOAD	15 TONNE
------------------	----------	----------



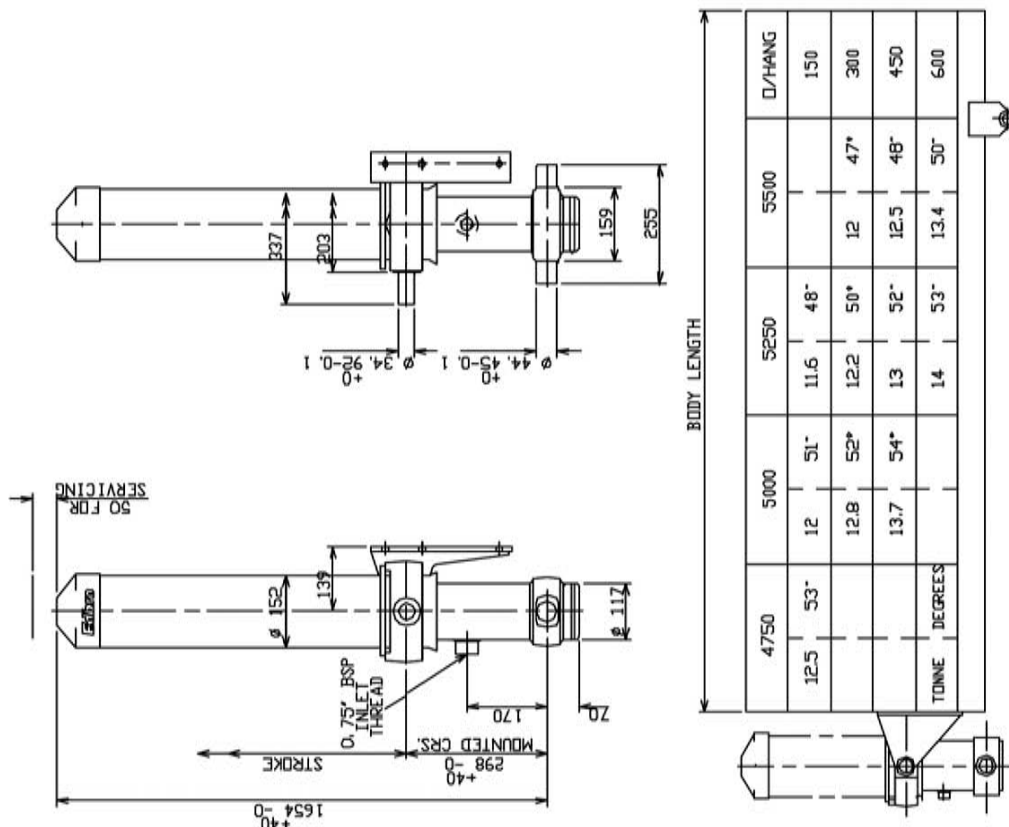
NOTE : INTERMEDIATE TUBES ARE HARDCHROMED

STAGES	3
SWEPT VOLUME	19 l
TOTAL STROKE	3659 mm
OPERATING PRESSURE	135 bar
MAXIMUM PRESSURE	150 bar
CYLINDER WEIGHT DRY	90 kg

DIMENSIONS IN MILLIMETRES UNLESS STATED OTHERWISE

CYLINDER ASSEMBLY	CS1000365
-------------------	-----------

SEAL KIT KCS10/3	MAX LOAD	15 TONNE
------------------	----------	----------



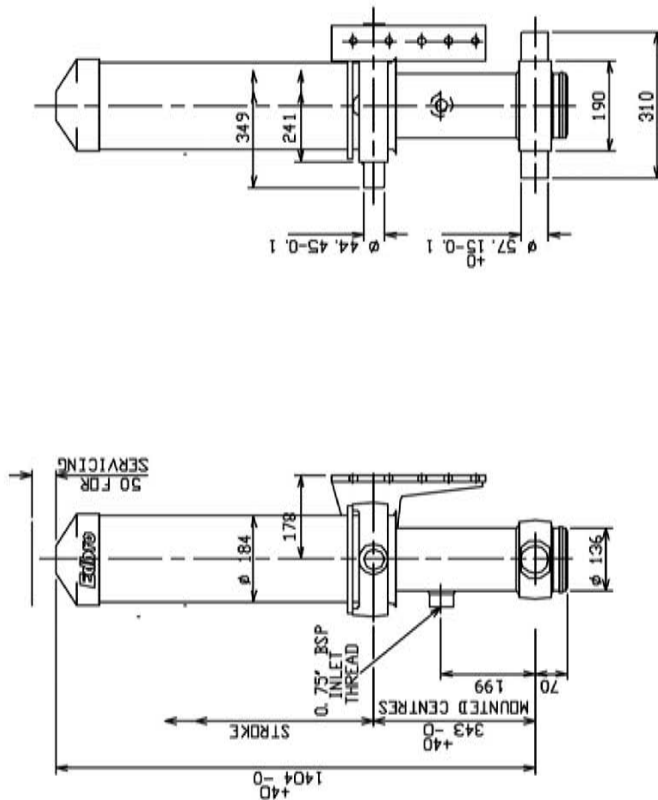
NOTE : INTERMEDIATE TUBES ARE HARDCHROMED

STAGES	3
SWEPT VOLUME	22 l
TOTAL STROKE	4259 mm
OPERATING PRESSURE	135 bar
MAXIMUM PRESSURE	150 bar
CYLINDER WEIGHT DRY	105 kg

DIMENSIONS IN MILLIMETRES UNLESS STATED OTHERWISE

CYLINDER ASSEMBLY	CS1000425
-------------------	-----------

SEAL KIT KCS10/3	MAX LOAD	14 TONNE
------------------	----------	----------



INTERMEDIATE TUBES HARDCHROMED

		BODY LENGTH											
		4000	4250	4500	4750	5000	5250	5500	D/HANG				
W	16° 52'	16	49	16	46	16	43		150			Ø	
	16° 54'	16	51*	16	47*	16	45*		300				
		16	53	16	49*	16	46*		450				
			16	51*	16	48*	16	45*	16	43*			
W	16° 53'			16	53*	16	50*	16	44*		750		
	16° 52'				16	52*	16	49*	16	46*			900

W = BODY WEIGHT + PAYLOAD (t)    Ø = ANGLE OF TIP (°)

SEAL KIT KCS11/3

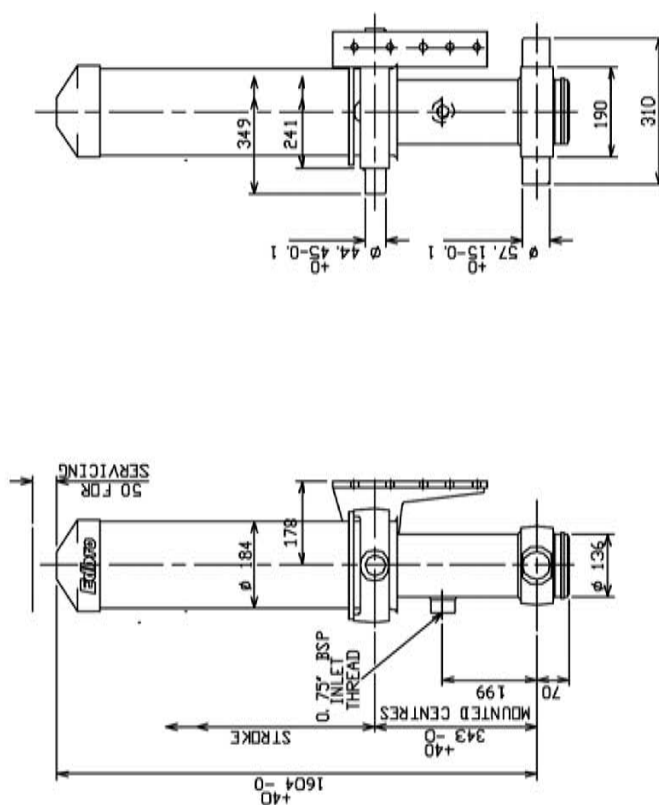
MAX LOAD 16 TONNE PLUS

STAGES		3
SWEPT VOLUME	27 l	
TOTAL STROKE	3494 mm	
OPERATING PRESSURE	135 bar	
MAXIMUM PRESSURE	150 bar	
CYLINDER WEIGHT DRY	122 kg	

DIMENSIONS IN MILLIMETRES UNLESS STATED OTHERWISE

CYLINDER ASSEMBLY CS1100349





BODY LENGTH										
4500	4750	5000	5250	5500	5750	6000	Q/HANG			
16 54"	16 51"	16 48"	16 46"	16 44"	16 43"	16 43"	150			
	16 53"	16 50"	16 47"	16 45"	16 44"	16 44"	300			
		16 52"	16 49"	16 46"	16 44"	16 44"	450			
		16 54"	16 51"	16 48"	16 45"	16 43"	600			
			16 52"	16 49"	16 47"	16 45"	750			
W	16	16	16	16	16	16	900			
			16 54"	16 51"	16 48"	16 46"				

W = BODY WEIGHT + PAYLOAD (T)    Ø = ANGLE OF TIP (°)

SEAL KIT KCS11/3    MAX LOAD 16 TONNE PLUS

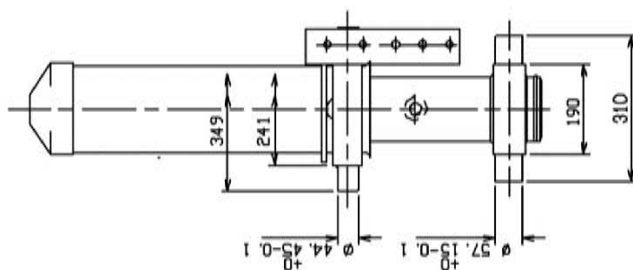
NOTE : INTERMEDIATE TUBES ARE HARDCHROMED

STAGES	3
SWEPT VOLUME	32 l
TOTAL STROKE	4094 MM
OPERATING PRESSURE	135 bar
MAXIMUM PRESSURE	150 bar
CYLINDER WEIGHT DRY	135 kg

DIMENSIONS IN MILLIMETRES UNLESS STATED OTHERWISE

CYLINDER ASSEMBLY    CS1100409



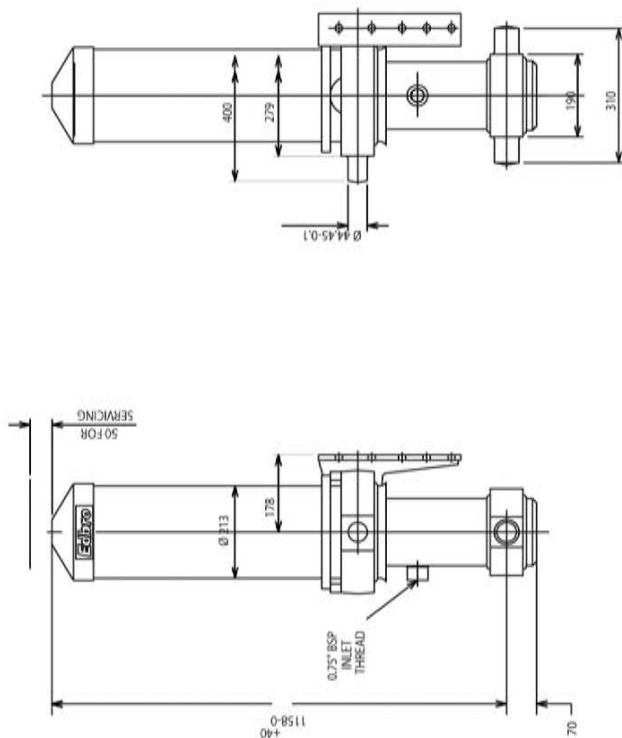


STAGES	4
SWEPT VOLUME	28 l
TOTAL STROKE	4271 mm
OPERATING PRESSURE	135 bar
MAXIMUM PRESSURE	150 bar
CYLINDER WEIGHT DRY	136 kg

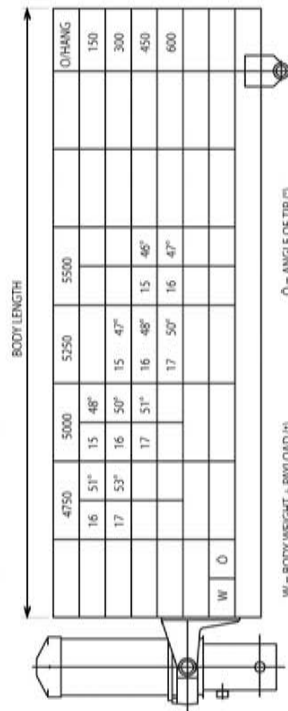
CYLINDER ASSEMBLY	CS1100427
-------------------	-----------

W = BODY WEIGHT + PAYLOAD (t)     $\theta$  = ANGLE OF TIP (°)

SEAL KIT KCS11/4	MAX LOAD	16 TONNE
------------------	----------	----------



NOTE: ALL TUBES HARDCHROMED



W = BODY WEIGHT + PAYLOAD (t)

O = ANGLE OF TIP (°)

SEAL KIT KCS13/5

MAX LOAD

15 TONNE PLUS

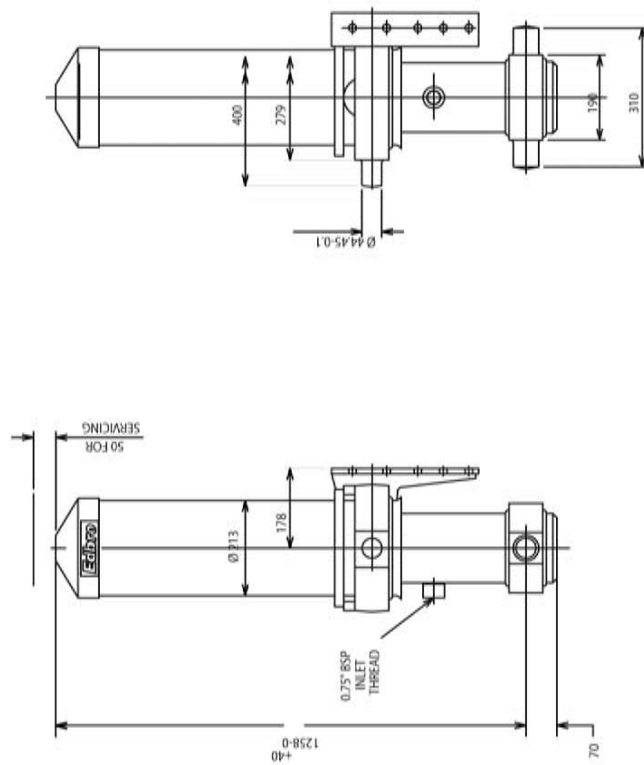
NOTE: INTERMEDIATE TUBES ARE HARDCHROMED

STAGES	5
SWEEP VOLUME	33 l
TOTAL STROKE	4068 MM
OPERATING PRESSURE	135 bar
MAXIMUM PRESSURE	150 bar
CYLINDER WEIGHT DRY	125 kg

DIMENSIONS IN MILLIMETRES UNLESS STATED OTHERWISE

CYLINDER ASSEMBLY

CS1300407



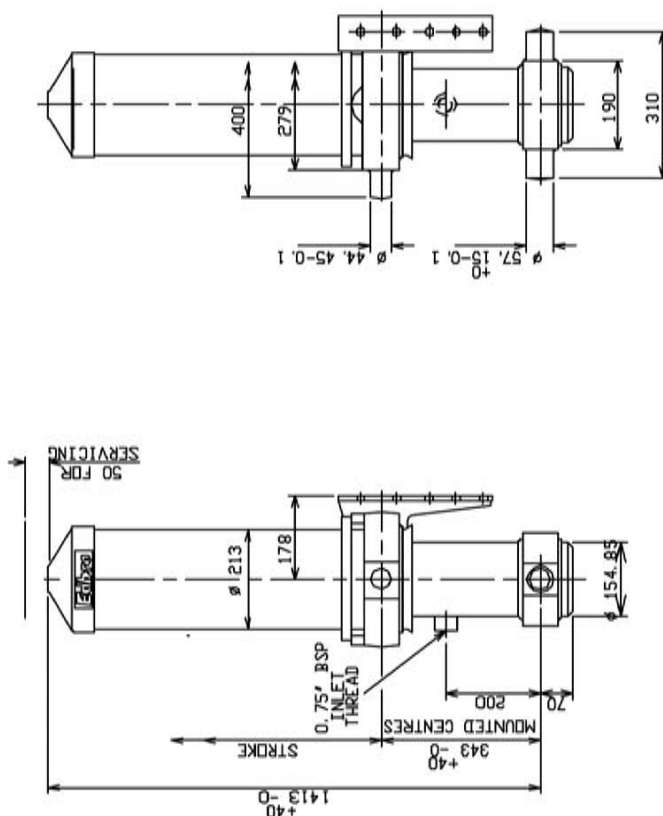
STAGES	5
SWEPT VOLUME	37 l
TOTAL STROKE	4568 mm
OPERATING PRESSURE	135 bar
MAXIMUM PRESSURE	150 bar
CYLINDER WEIGHT DRY	141 kg

DIMENSIONS IN MILLIMETRES UNLESS STATED OTHERWISE

CYLINDER ASSEMBLY	CS1300457
-------------------	-----------

[illegible]
$$W = \text{BODY WEIGHT} + \text{PAYLOAD (N)}$$
 $\delta = \text{ANGLE OF TIP (}^\circ\text{)}$ 

SFAI KIT KCS13/5	MAX LOAD	15 TONNE PLUS
------------------	----------	---------------



NOTE : ALL TUBES HARDCHROMED

		BODY LENGTH										
		5250	5500	5750	6000	6250	6500	6750	7000	7250	7500	D/HANG
22	53°	21	50°	20	48°	19	46°	19	44°			150
24	54°	22	52°	21	49°	20	47°	20	45°			300
		24	53°	23	50°	22	48°	21	46°	20	44°	450
			24	53°	23	50°	22	47°	21	45°		600
				24	54°	24	51°	23	49°	22	44°	750
V	θ			24	55°	24	53°	24	50°	23	46°	900

V = BODY WEIGHT + PAYLOAD (±)    θ = ANGLE OF TIP (°)

STAGES	4
SWEPT VOLUME	44 l
TOTAL STROKE	4641 mm
OPERATING PRESSURE	135 bar
MAXIMUM PRESSURE	150 bar
CYLINDER WEIGHT DRY	165 kg

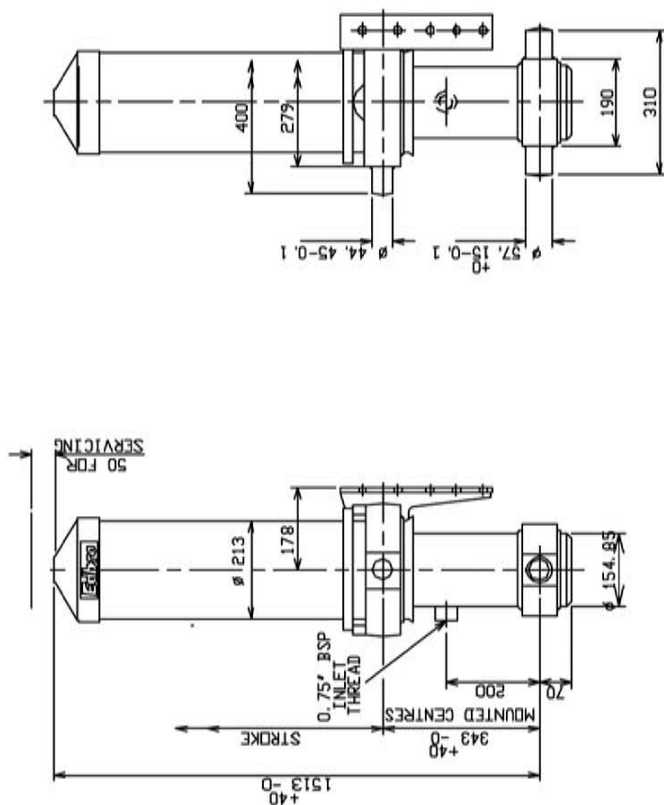
DIMENSIONS IN MILLIMETRES UNLESS STATED OTHERWISE

SEAL KIT KCS13/4

CYLINDER ASSEMBLY

CS1300464

MAX LOAD 19-24 tonne



NOTE : ALL TUBES HARDCHROMED

		BODY LENGTH						
		5750	6000	6250	6500	D/HANG		
W	25	51*	23	49*	23	47*	100	
	26	52*	25	50*	24	48*	200	
	27	53*	26	51*	25	49*	300	
B			27	52*	26	50*	400	
				27	51*	26	48*	500
				28	51*	27	49*	600

W = BODY WEIGHT + BANG PAK (+)      B = ANGLE OF TID (°)

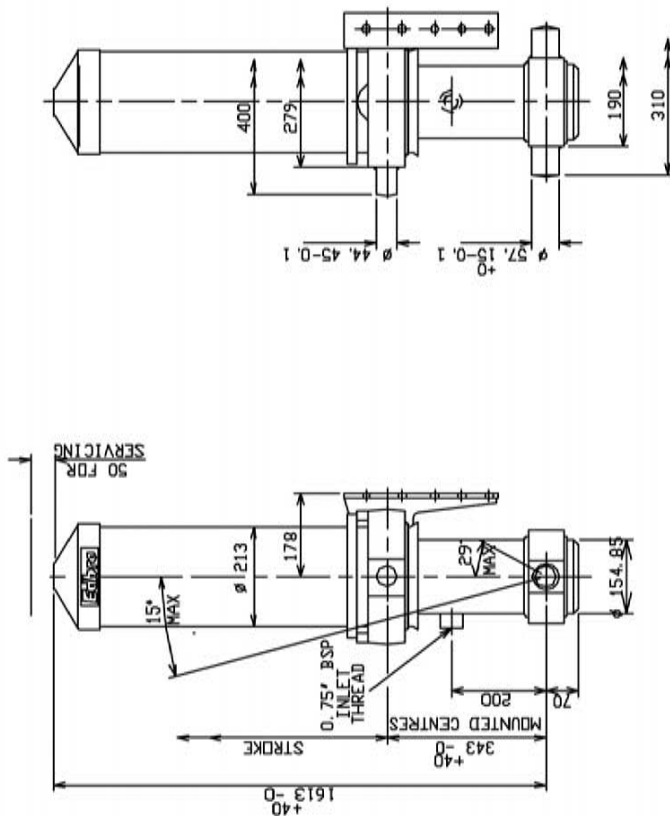
W = BODY WEIGHT + PAYLOAD (KG)    B = ANGLE OF TIP (°)

STAGES	4
SWEPT VOLUME	47 l
TOTAL STROKE	5041 mm
OPERATING PRESSURE	135 bar
MAXIMUM PRESSURE	150 bar
CYLINDER WEIGHT DRY	177 kg

DIMENSIONS IN MILLIMETRES UNLESS STATED OTHERWISE

SEAL KIT KCS13/4    MAX LOAD 19-24 tonne

CYLINDER ASSEMBLY    CS1300504



NOTE : ALL TUBES HARDCHROMED

BODY LENGTH

	6000	6250	6500	6750	7000	7250	D/HANG
	23   53*	22   52*	21   49*	20   47*			100
		23   52*	22   50*	21   48*			200
		24   53*	23   51*	22   49*	21   47*		300
			23   51*	23   49*	22   48*		400
			24   52*	23   50*	22   48*	22   46*	500
				24   51*	23   49*	22   47*	600
W	5						
5							

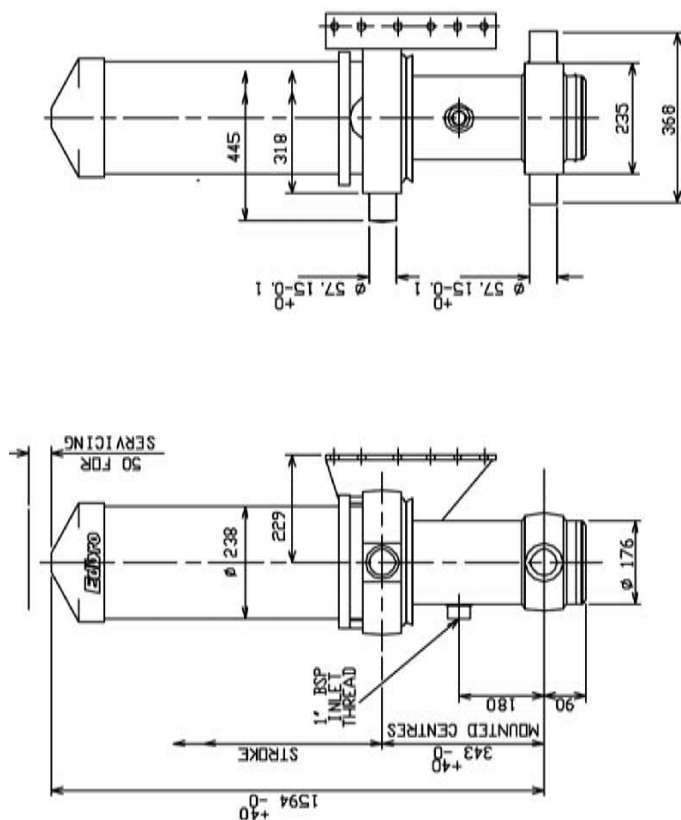
W = BODY WEIGHT + PAYLOAD (t)    5 = ANGLE OF TIP (°)

STAGES	4
SWEPT VOLUME	51 l
TOTAL STROKE	5441 MM
OPERATING PRESSURE	135 bar
MAXIMUM PRESSURE	150 bar
CYLINDER WEIGHT DRY	185 kg

DIMENSIONS IN MILLIMETRES UNLESS STATED OTHERWISE

SEAL KIT KCS13/4    MAX LOAD    19-24 tonne

CYLINDER ASSEMBLY    CS1300544



NOTE : INTERMEDIATE TUBES HARD-CHROMED

BODY LENGTH													D/HANG
6250	6500	6750	7000	7250	7500	7750							
32 51"	32 49"	31 47"	30 45"									150	
32 52"	32 50"	32 48"	31 46"	30 44"								300	
32 54"	32 51"	32 49"	32 47"	32 45"	31 44"							450	
	32 53"	32 50"	32 48"	32 46"	32 45"							600	
	32 54"	32 52"	32 50"	32 48"	32 46"	32 44"						750	
W Ø		32 53"	32 51"	32 49"	32 47"	32 45"						900	

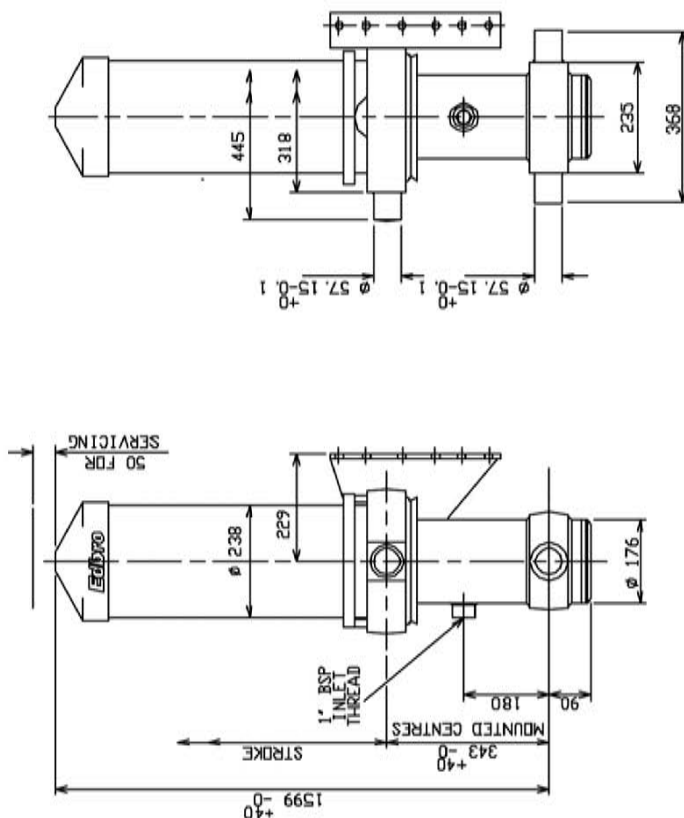
W = BODY WEIGHT + PAYLOAD (t)    Ø = ANGLE OF TIP (°)

SEAL KIT KCS15/4    MAX LOAD 30-32 tonne

STAGES	4
SWEPT VOLUME	69 l
TOTAL STROKE	5406 mm
OPERATING PRESSURE	135 bar
MAXIMUM PRESSURE	150 bar
CYLINDER WEIGHT DRY	234 kg

DIMENSIONS IN MILLIMETRES UNLESS STATED OTHERWISE

CYLINDER ASSEMBLY    CS1500540



NOTE : INTERMEDIATE TUBES HARD-RODDED

BODY LENGTH

7500	7750	8000	8250	8500	8750	D/HANG
23' 51"	22' 49"	22' 48"	21' 46"			150
24' 52"	23' 50"	23' 48"	22' 47"	22' 45"		300
24' 53"	24' 51"	24' 49"	23' 48"	23' 46"	22' 45"	450
	24' 53"	24' 51"	24' 49"	24' 47"	23' 46"	600
		24' 52"	24' 50"	24' 48"	24' 46"	750
				24' 49"	24' 47"	900
W	B					

W = BODY WEIGHT + PAYLOAD (t)    B = ANGLE OF TIP (°)

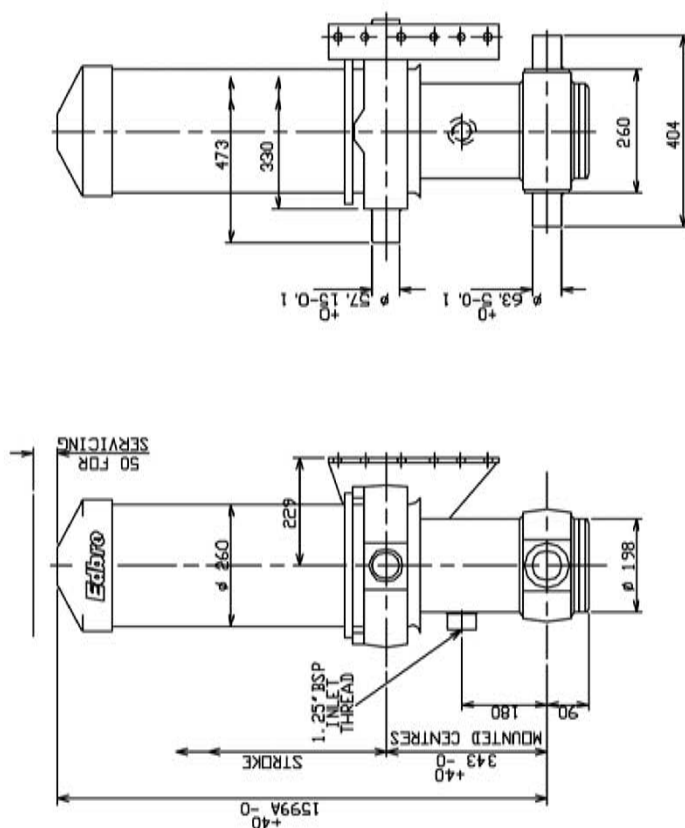
SEAL KIT KCS15/5    MAX LOAD 20-24 tonne

STAGES	5
SWEPT VOLUME	75 l
TOTAL STROKE	6528 mm
OPERATING PRESSURE	135 bar
MAXIMUM PRESSURE	150 bar
CYLINDER WEIGHT DRY	250 kg

DIMENSIONS IN MILLIMETRES UNLESS STATED OTHERWISE

CYLINDER ASSEMBLY    CS1500652





NOTE : INTERMEDIATE TUBES HARDCHROMED

BODY LENGTH

BODY LENGTH												
	7750	8000	8250	8500	8750	9000	9250	Q/HANG				
35	51°	33° 49'	32° 48'	31° 46'	30° 45'	30° 44'		150				
36	52°	35° 50'	34° 49'	33° 47'	31° 46°	31° 44°	30° 43°	300				
39	53°	37° 52'	35° 50'	34° 48'	33° 47'	32° 45'	31° 44'	450				
		39° 53'	37° 51'	36° 49'	34° 48'	33° 46'	32° 45'	600				
			39° 52'	38° 50'	36° 49°	35° 47°	34° 46°	750				
W	Q			40° 51'	38° 49'	36° 48'	35° 46'	900				

W = BODY WEIGHT + PAYLOAD (t)    θ = ANGLE OF TIP (°)

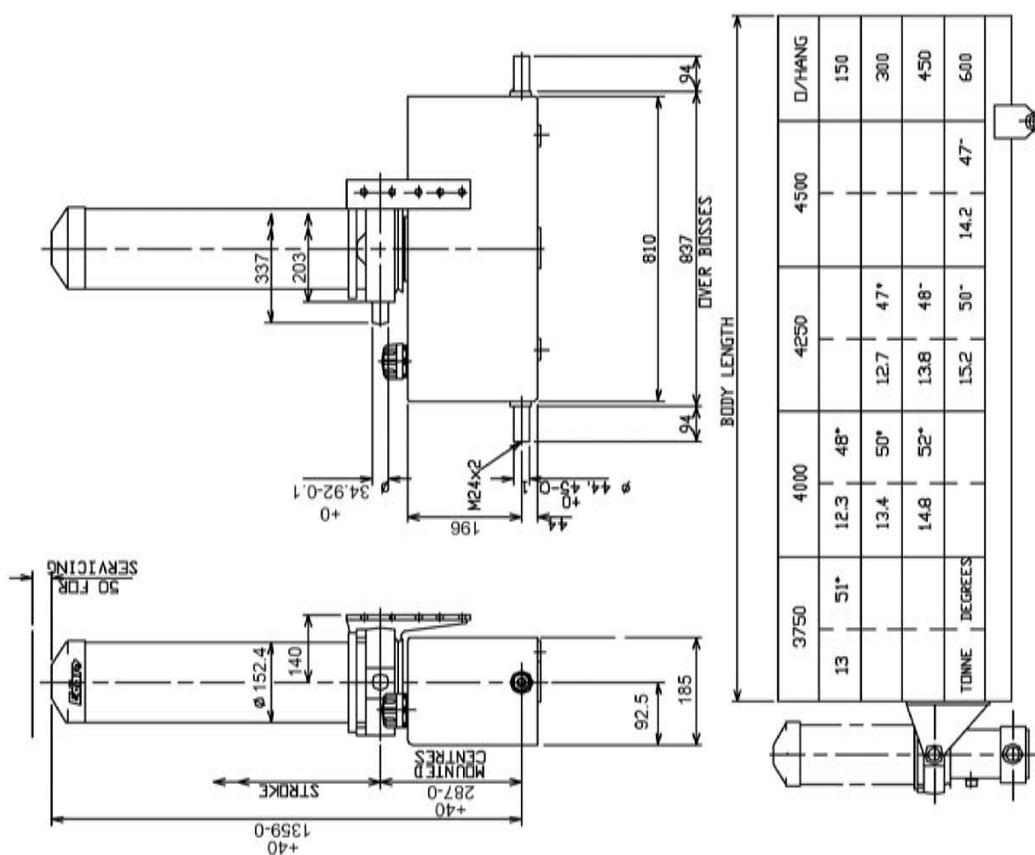
W = BODY WEIGHT + PAYLOAD (t)    Q = ANGLE OF TIP (°)

STAGES	5
SWEPT VOLUME	102 l
TOTAL STROKE	6733 mm
OPERATING PRESSURE	135 bar
MAXIMUM PRESSURE	150 bar
CYLINDER WEIGHT DRY	312 kg

DIMENSIONS IN MILLIMETRES UNLESS STATED OTHERWISE

SEAL KIT KCS17/5    MAX LOAD    40    tonne

CYLINDER ASSEMBLY    CS1700673



STAGES	3
SWEPT VOLUME	16.75 l
TOTAL STROKE	3209 MM
OIL TANK CAPACITY	25 l
OPERATING PRESSURE	135 bar
MAXIMUM PRESSURE	150 bar
CYLINDER WEIGHT DRY	125 kg

DIMENSIONS IN MILLIMETRES UNLESS STATED OTHERWISE

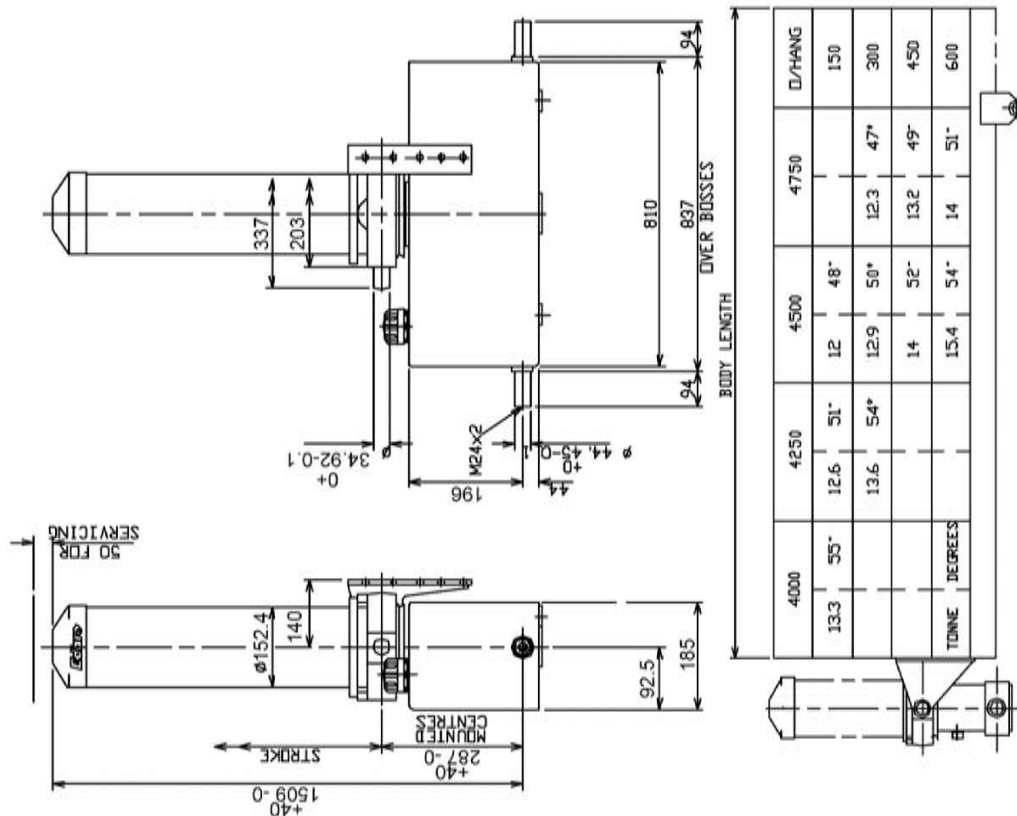
SEAL KIT KCS10/3

MAX LOAD

15 TONNE

CYLINDER ASSEMBLY

CX1000320

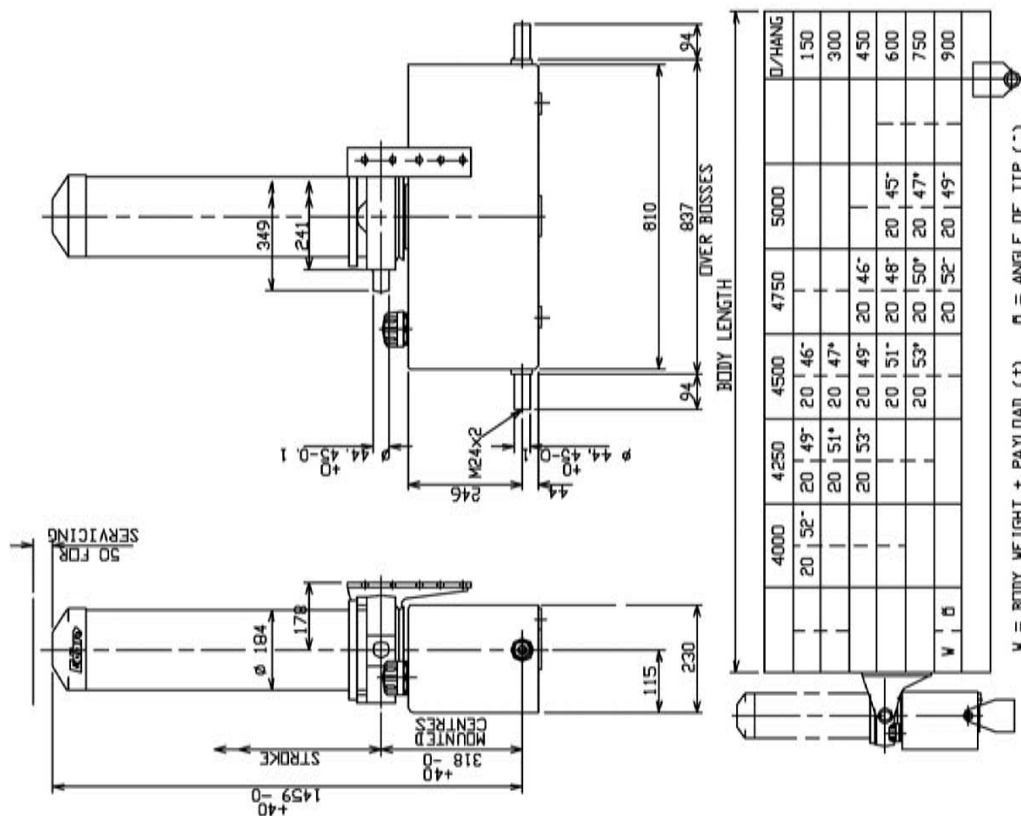


STAGES	3
SWEPT VOLUME	19.1 l
TOTAL STROKE	3659 mm
OIL TANK CAPACITY	25 l
OPERATING PRESSURE	135 bar
MAXIMUM PRESSURE	150 bar
CYLINDER WEIGHT DRY	140 kg

DIMENSIONS IN MILLIMETRES UNLESS STATED OTHERWISE

CYLINDER ASSEMBLY CX1000365

SEAL KIT KCS10/3 MAX LOAD 15 TONNE



DIMENSIONS IN MILLIMETRES UNLESS STATED OTHERWISE

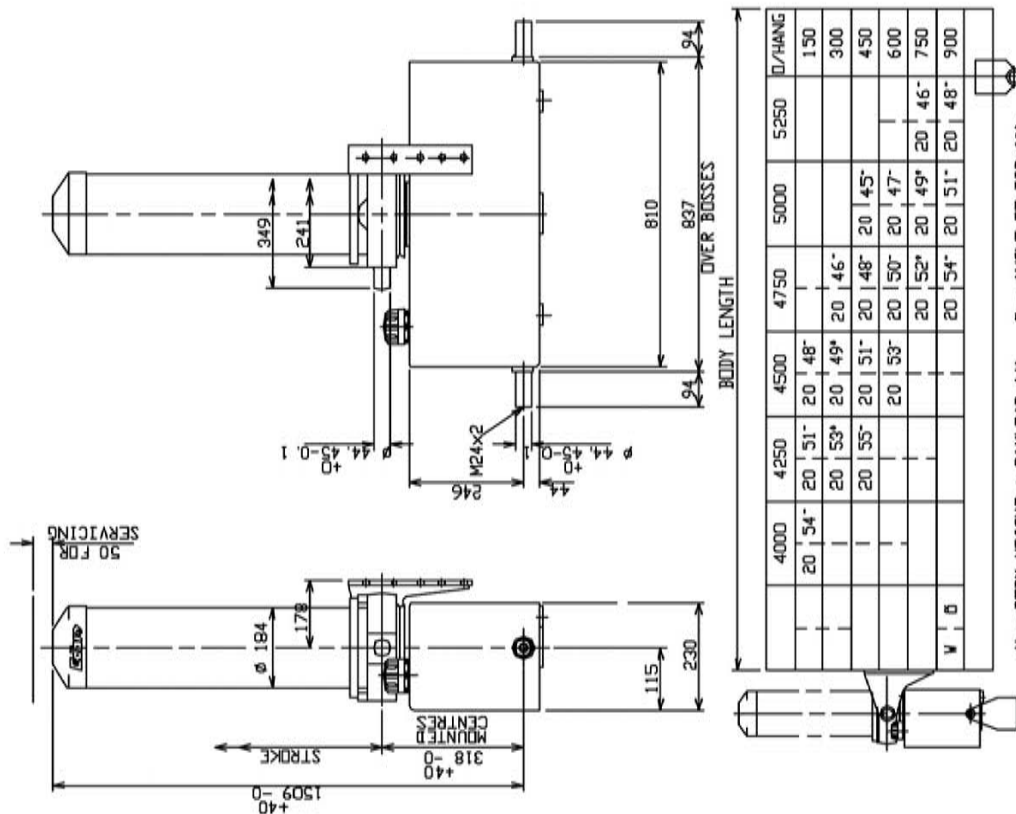
STAGES	3
SWEPT VOLUME	27 l
TOTAL STROKE	3494 mm
OIL TANK CAPACITY	38 l
OPERATING PRESSURE	135 bar
MAXIMUM PRESSURE	150 bar
CYLINDER WEIGHT DRY	181 kg

CYLINDER ASSEMBLY CX1100349

SEAL KIT KCS11/3 MAX LOAD 20 tonne

W = BODY WEIGHT + PAYLOAD (t) α = ANGLE OF TIP (°)

W	4000	4250	4500	4750	5000	Q/HANG
20°	52°	20°	49°	20°	46°	150
20°	51°	20°	47°	20°	45°	300
20°	53°	20°	49°	20°	46°	450
20°	51°	20°	48°	20°	45°	600
20°	53°	20°	50°	20°	47°	750
20°	52°	20°	49°	20°	45°	900



STAGES	3
SWEPT VOLUME	28 l
TOTAL STROKE	3644 mm
OIL TANK CAPACITY	38 l
OPERATING PRESSURE	135 bar
MAXIMUM PRESSURE	150 bar
CYLINDER WEIGHT DRY	185 kg

DIMENSIONS IN MILLIMETRES UNLESS STATED OTHERWISE

CYLINDER ASSEMBLY CX1100364

SEAL KIT KCS11/3

MAX LOAD 20 tonne



SEAL KIT KCS11/4

MAX LOAD	16 tonne
----------	----------

STAGES	4
SNEPT VOLUME	28 l
TOTAL STROKE	4271 MM
OIL TANK CAPACITY	38 l
OPERATING PRESSURE	135 bar
MAXIMUM PRESSURE	150 bar
CYLINDER WEIGHT DRY	195 kg

DIMENSIONS IN MILLIMETRES UNLESS STATED OTHERWISE

CYLINDER ASSEMBLY	CX1100427
-------------------	-----------



SEAL KIT KCS13/4

MAX LOAD	24 tonne
----------	----------

STAGES	4
SWEPT VOLUME	40 l
TOTAL STROKE	4241 MM
OIL TANK CAPACITY	58 l
OPERATING PRESSURE	135 bar
MAXIMUM PRESSURE	150 bar
CYLINDER WEIGHT DRY	260 kg

DIMENSIONS IN MILLIMETRES UNLESS STATED OTHERWISE

CYLINDER ASSEMBLY	CX1300424
-------------------	-----------





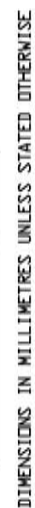
SEAL KIT KCS13/4	MAX LOAD	19-24 tonne
------------------	----------	-------------

STAGES	4
SWEPT VOLUME	44 l
TOTAL STROKE	4641 MM
OIL TANK CAPACITY	58 l
OPERATING PRESSURE	135 bar
MAXIMUM PRESSURE	150 bar
CYLINDER WEIGHT DRY	270 kg

DIMENSIONS IN MILLIMETRES UNLESS STATED OTHERWISE

CYLINDER ASSEMBLY	CX1300464
-------------------	-----------





STAGES	4
SWEPT VOLUME	51 l
TOTAL STROKE	5441 MM
OIL TANK CAPACITY	58 l
OPERATING PRESSURE	135 bar
MAXIMUM PRESSURE	150 bar
CYLINDER WEIGHT DRY	290 kg

CYLINDER ASSEMBLY	CX1300544
-------------------	-----------

W = BODY WEIGHT + PAYLOAD (t)     $\theta$  = ANGLE OF TIP (°)

SEAL KIT KCS13/4	MAX LOAD	19-24 tonne
------------------	----------	-------------