

# FILTRATION & OIL TANKS



## Filtration

Part No:	Description.	Page:
F200AN	RETURN LINE FILTER (TANK)	10-01
FSP2121EDNN	RETURN LINE FILTER (INLINE)	10-03
AF128	HYDRAULIC LEVEL GAUGE	10-04
AF83/CHROME	METAL FILLER BREATHERS	10-05
AF83/PLASTIC	ANTI-SPLASH FILLER BREATHERS	10-06
EA139	HIGH PRESSURE FILLERS	10-07

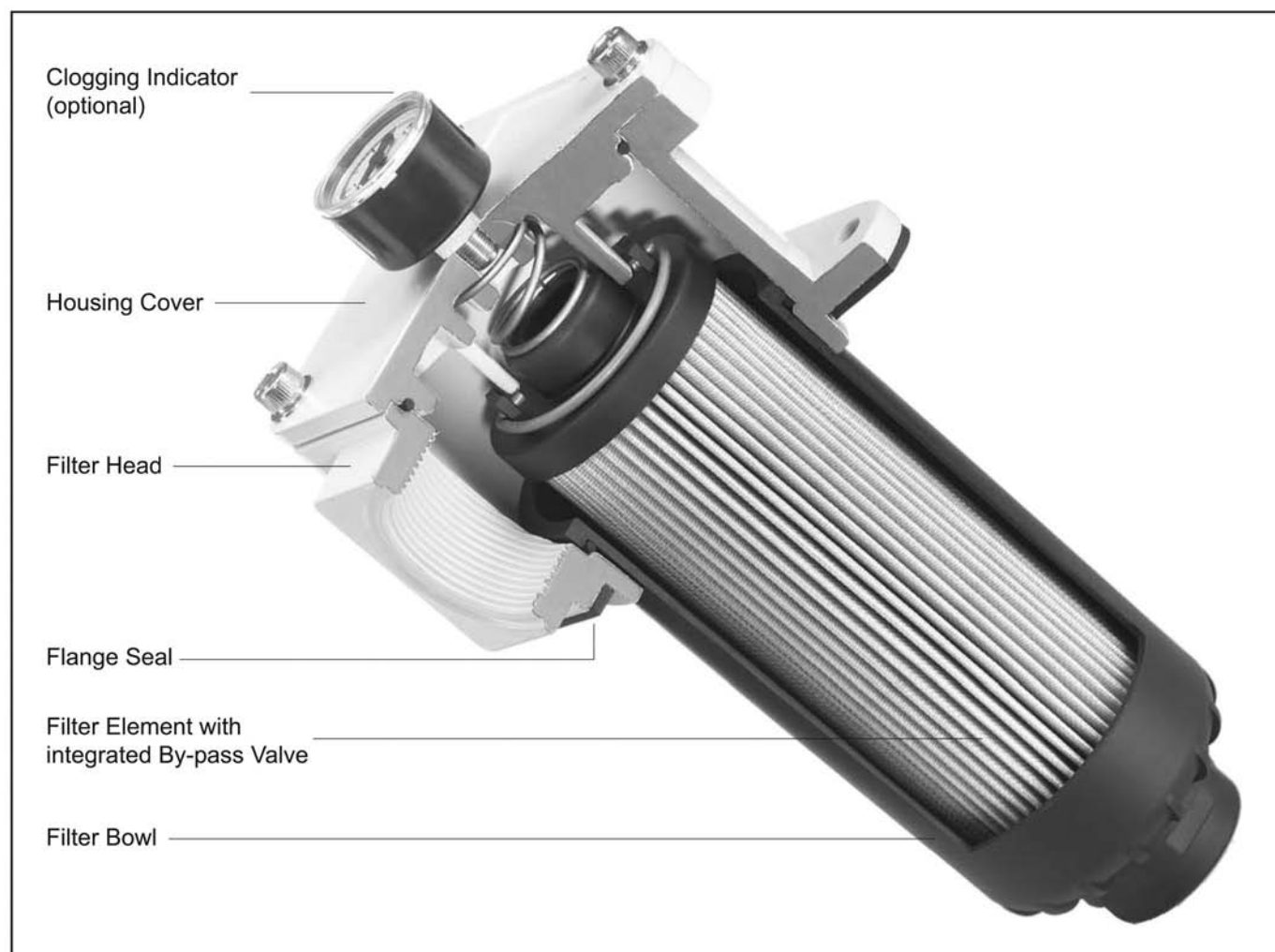
## Oil Tanks

Part No:	Description.	Page:
135-600-1	OIL TANKS	10-08
KTK001-BA	EXTERNAL TANK 75L	10-09
KTK021-BA	EXTERNAL TANK 100L	10-10
KTK002-BA	EXTERNAL TANK 140L	10-11
KTK003-BA	EXTERNAL TANK 200L	10-12
KTK004-BA	EXTERNAL TANK 300L	10-13
KTK005-BA	EXTERNAL TANK 400L	10-14



### Technical Data

F200AN return line filters are designed as tank top filters. They are mounted directly on the tank top and if 100% of the system oil is filtered, they provide the optimum removal of contaminant from the system. This provides the pump with clean oil thus reducing contaminant generated wear. The filter bowl or funnel is designed to return the oil beneath the surface thus preventing the entrainment of air by the returning oil.

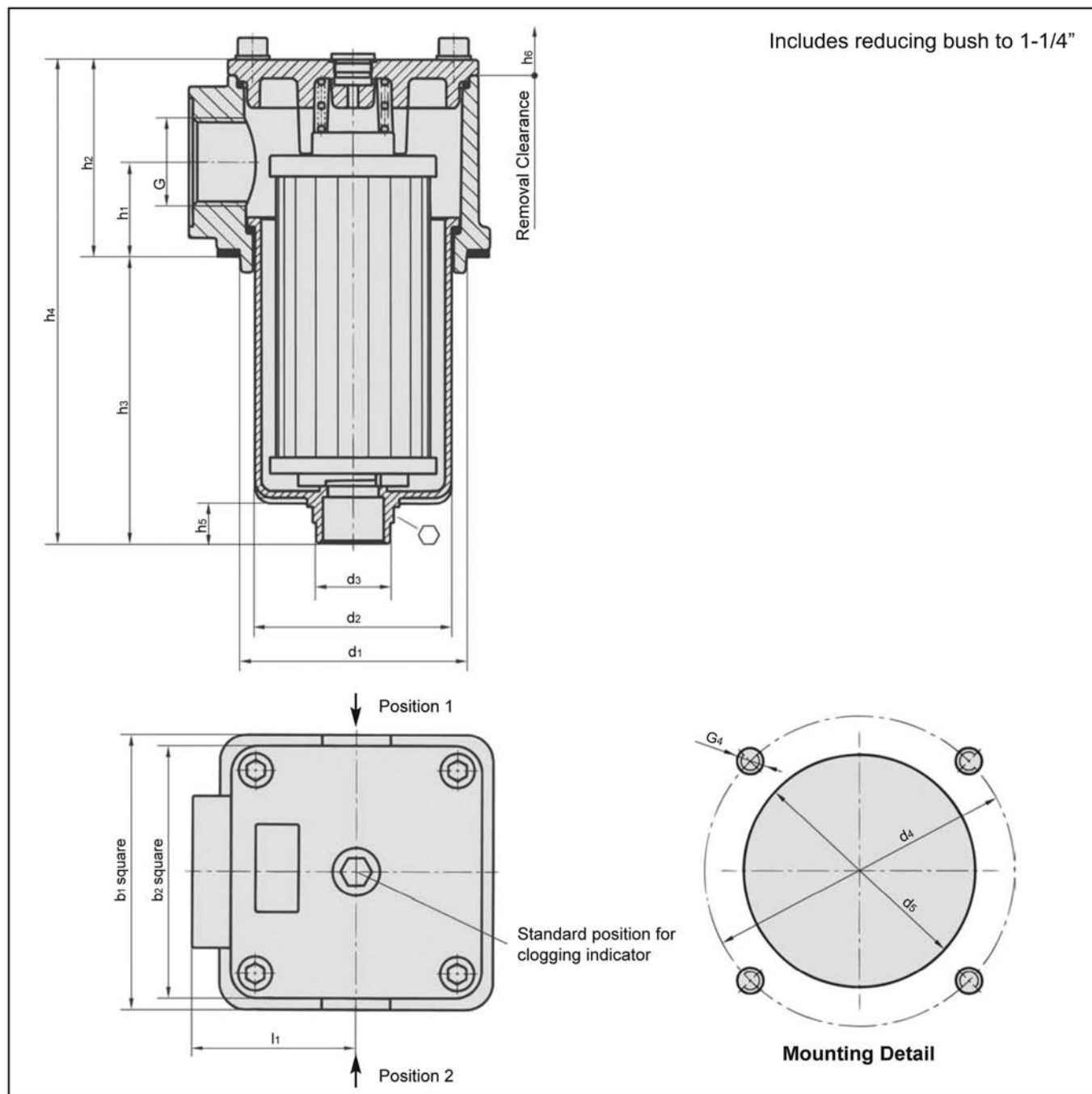


### Technical Specification

Construction	Tank Top flange mounting	By-pass valve (integrated in the filter element)	Opening pressure 3 bar $\pm$ 0,3 bar (43,5 PSI $\pm$ 4,35 PSI) other pressures on request
Filter head	Aluminium	Clogging indicator	Gauge type indicator 0...4 bar (0...58 PSI) coloured segments; Electrical switch, setting 2,5 bar (36,25 PSI)
Filter bowl	Glass fiber reinforced polyamide	Part No.	F200AN
Seals	NBR (Buna-N®), FPM (Viton®) or EPDM (Ethylene-Propylene)		CE200A (Element Only)
Threaded connection	BSP, NPT- and SAE-"O"-Ring thread as well as SAE-flange 3000 PSI		
Operating pressure	max 16 bar (232 PSI)		
Proof pressure	24 bar (350 PSI)		
Temperature Range	-10° to +100°C (14° to 212°F)		



**Dimensions RF 014-130**



**Dimensions Return Line Filters**

All dimensions in mm (inch)

Filter Size	Thread Connection G				Dimensions																				
	BSP	NPT	SAE- "O" Ring Thread	SAE Flange 3000 PSI	b <sub>1</sub>	b <sub>2</sub>	b <sub>3</sub>	b <sub>4</sub>	b <sub>5</sub>	b <sub>6</sub>	d <sub>1</sub>	d <sub>2</sub>	d <sub>3</sub>	d <sub>4</sub>	d <sub>5</sub>	h <sub>1</sub>	h <sub>2</sub>	h <sub>3</sub>	h <sub>4</sub>	h <sub>5</sub>	h <sub>6</sub>	l <sub>1</sub>	G <sub>2</sub>	G <sub>3</sub>	G <sub>4</sub>
RF 070	G 1½	1½"	17/8-12 UN	-	120 (4,72)	110 (4,33)					100 (3,94)	84 (3,31)	48 (1,89)	135 (5,14)	105 (4,13)	41 (1,61)	86 (3,39)	180 (7,09)	267 (10,51)	24 (0,95)	240 (9,45)	66 (2,6)	G1¼		M8 or 7/16" UNC



# FSP2121EDNN

## RETURN LINE FILTER (INLINE)

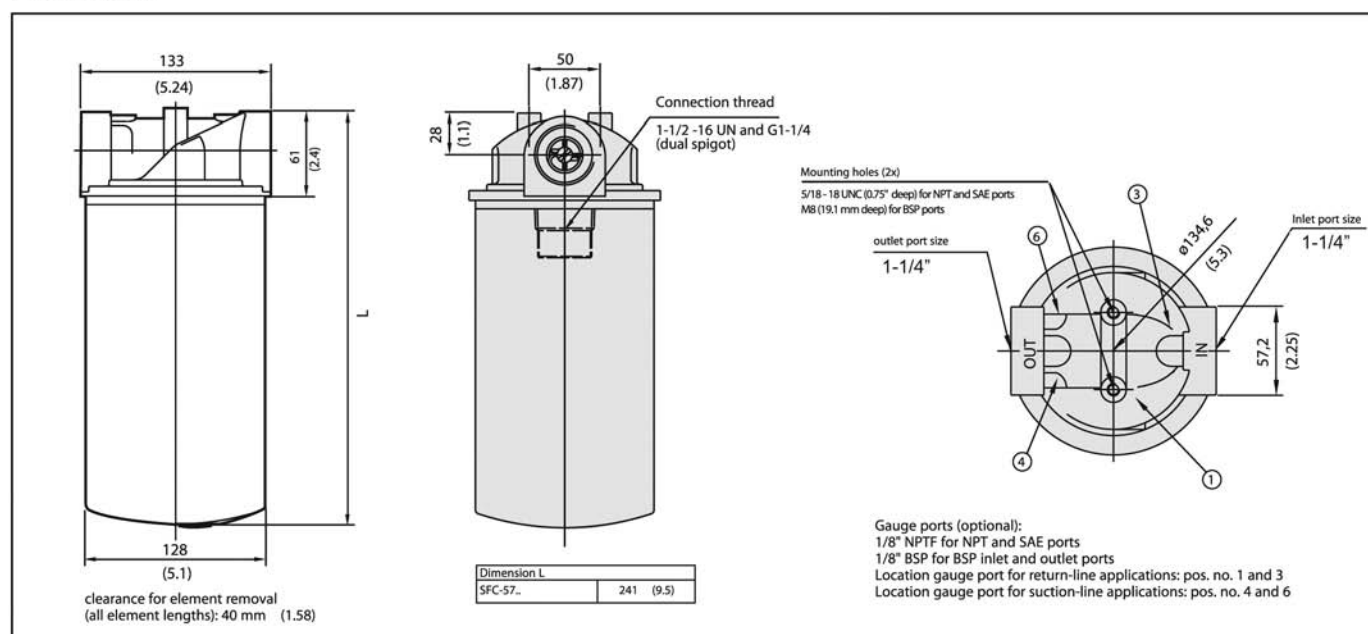
10-03

### Technical Specification

Construction	Die cast aluminium head
Seals	NBR (Buna-N®)
Port connections	BSP, NPT or SAE "O"-Ring thread
Flow rate	225 l/min (60 US GPM) for return line, 46 l/min (12 US GPM) for suction line applications
Working pressure	max 14 bar (200 PSI), maximum pressure differential of 5,5 bar (80 PSI) for any application with no by-pass valve
Operating temperature	-32°C to +100°C (-25°F to 212°F)



### Dimensions



Dimensions in mm (inch)

Part No. FSP2121EDNN  
FSPELEMENT (Element Only)





### Area of Application:

Visual fluid level indication in hydraulic reservoirs

### Characteristics:

- suitable for hydraulic oil HL and HLP

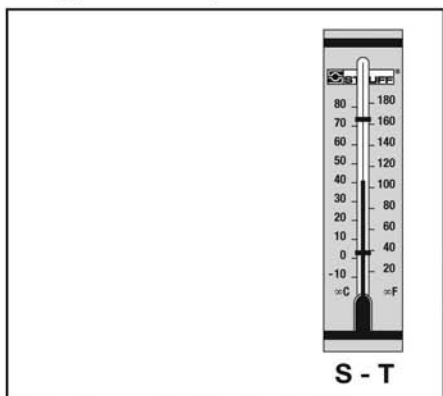
### Technical Data:

Temperature range:  $-30^{\circ}\text{C} \dots +80^{\circ}\text{C}$   
 Calibration of capillary tube thermometer:  
 SNA 127/176/254/305  $-10^{\circ}\text{C} \dots +80^{\circ}\text{C}$   
 Calibration of dial thermometer with probe:  
 $0^{\circ}\text{C} \dots +100^{\circ}\text{C}$   
 Tank pressure: 1 bar max  
 Recommended tightening torque: 8 Nm

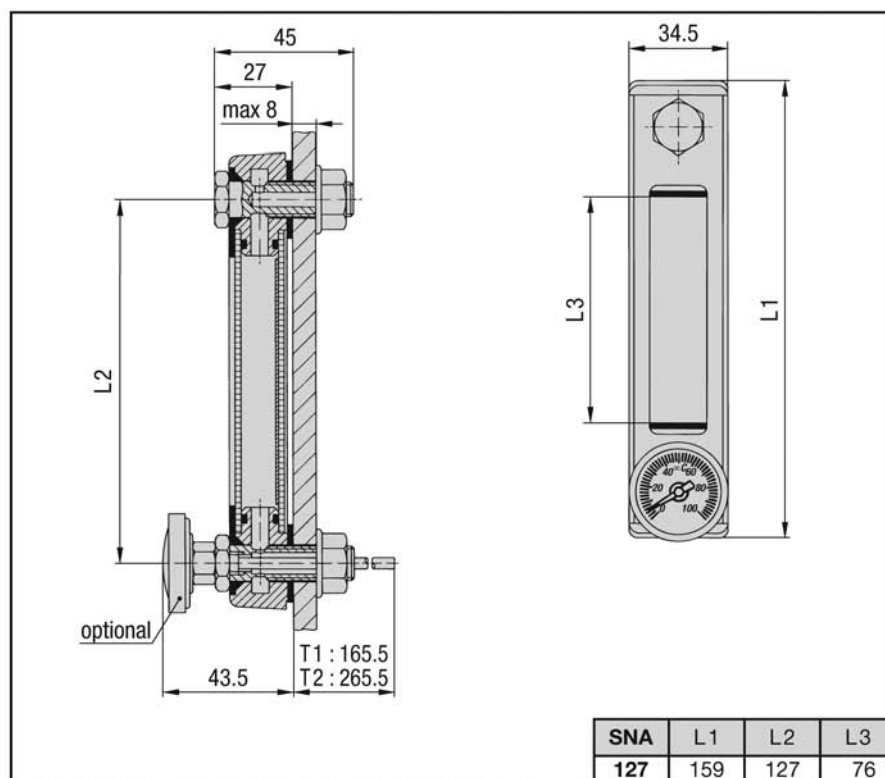
### Materials:

Housing: St 12 (black epoxy)  
 Plugs, Sight tube: PA  
 Scale Plates: PVC

### Design of scale plate



### Dimensions



Part No. AF128



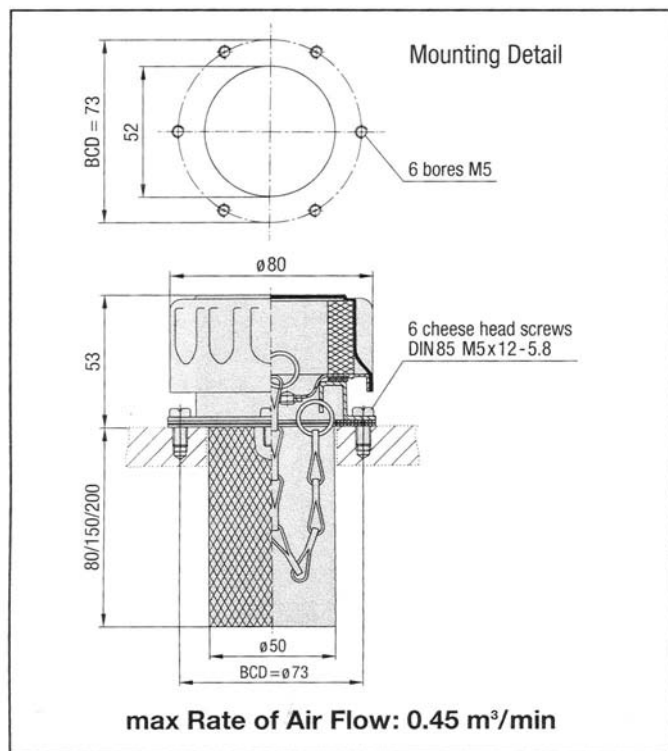


### Area of Application:

Ventilation and tank filling

### Standard Versions:

- Breather cap: Steel, chrome-plated
- Socket: Steel, chrome-plated
- Air filter insert: 10 µm foam (PUR)
- Basket: Steel, zinc-plated
- Basket Micron Rating: 300 µm
- Gaskets: Cork, Rubber



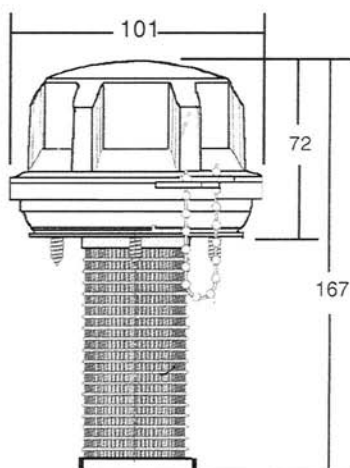
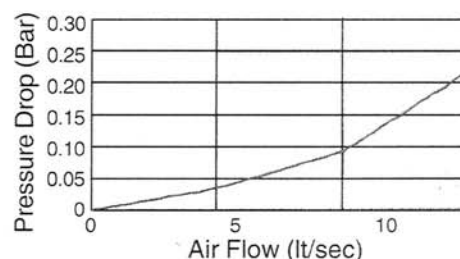
## IP65 Anti-splash BREATHERS for Hydraulic Reservoirs

Anti-splash breathers with IP65 protection are ideal for hydraulic systems exposed to the weather with frequent wash-down requirements. Additionally, on mobile applications, the anti-splash baffle prevents oil loss through the breather.

This oil loss in turn leads to dust-saturated oil collecting on reservoir tops. The IP65 breathers are available as filler types or as screw-in breather types. The non-corrodable glass filled nylon material is stabilised against UV radiation. To prevent unauthorised entry, the units are provided with moulded lugs to accept a padlock.

### SPECIFICATIONS

Body Material:	non-corrodable glass-filled nylon
Strainer Material:	polypropylene
Filtration Element:	expanded polyurethane foam, 10µm
Seals:	Nitrile
Temperature Range:	- 30°C to +90°C



### SPB-S-5-10-S080-A-O

#### 6 hole mount, 10µm, with strainer

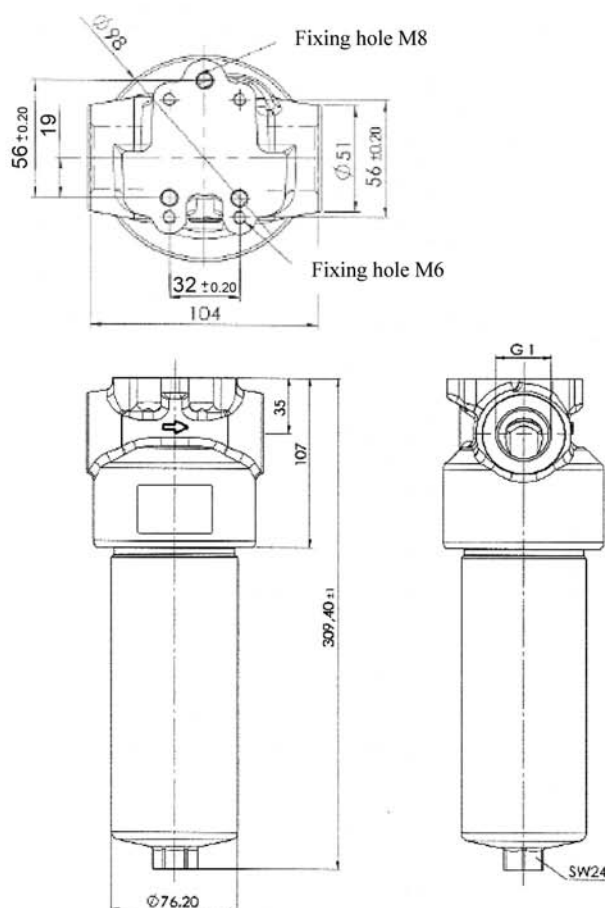
Breather is secured by 6 self-tapping screws using the standard 73mm PCD flange mount and nitrile seal.





### Technical data:

Filter complete	EA 1391
Filter element	EA 1392
Seal kit	TD 513
Q/ max	110 l /min
P / max	400 bar
P / Bypass	7 bar
connection	G 3/4 "



Die PALFINGER Zusatzöltanks sind mit Volumen von 75 bis 400 Liter lieferbar.

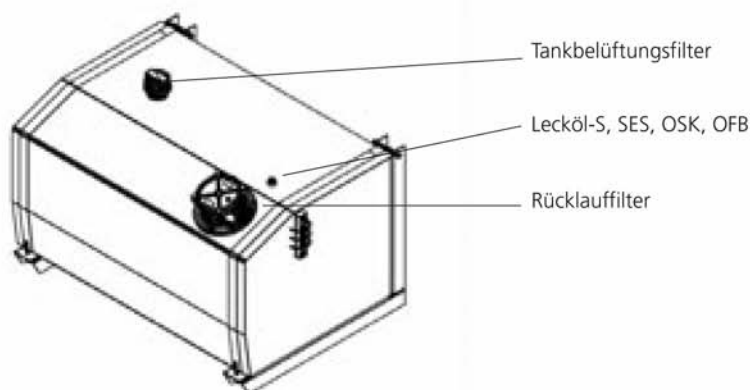
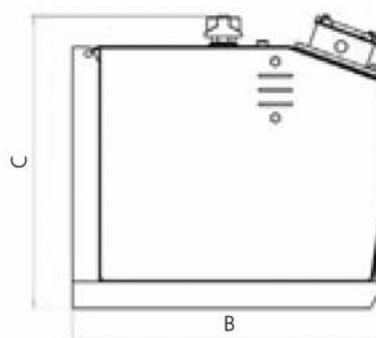
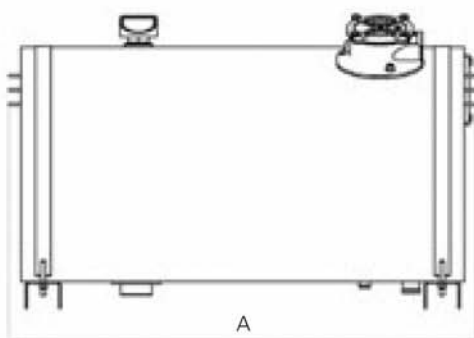
Die Abmessungen wurden so gewählt, dass ein problemloses Anbringen am Fahrzeug gewährleistet ist. Alle Öltanks sind mit einem Ölschauglas und einem Rücklauffilter ausgestattet, um die Verschmutzungsgefahr im Hydrauliksystem zu minimieren.

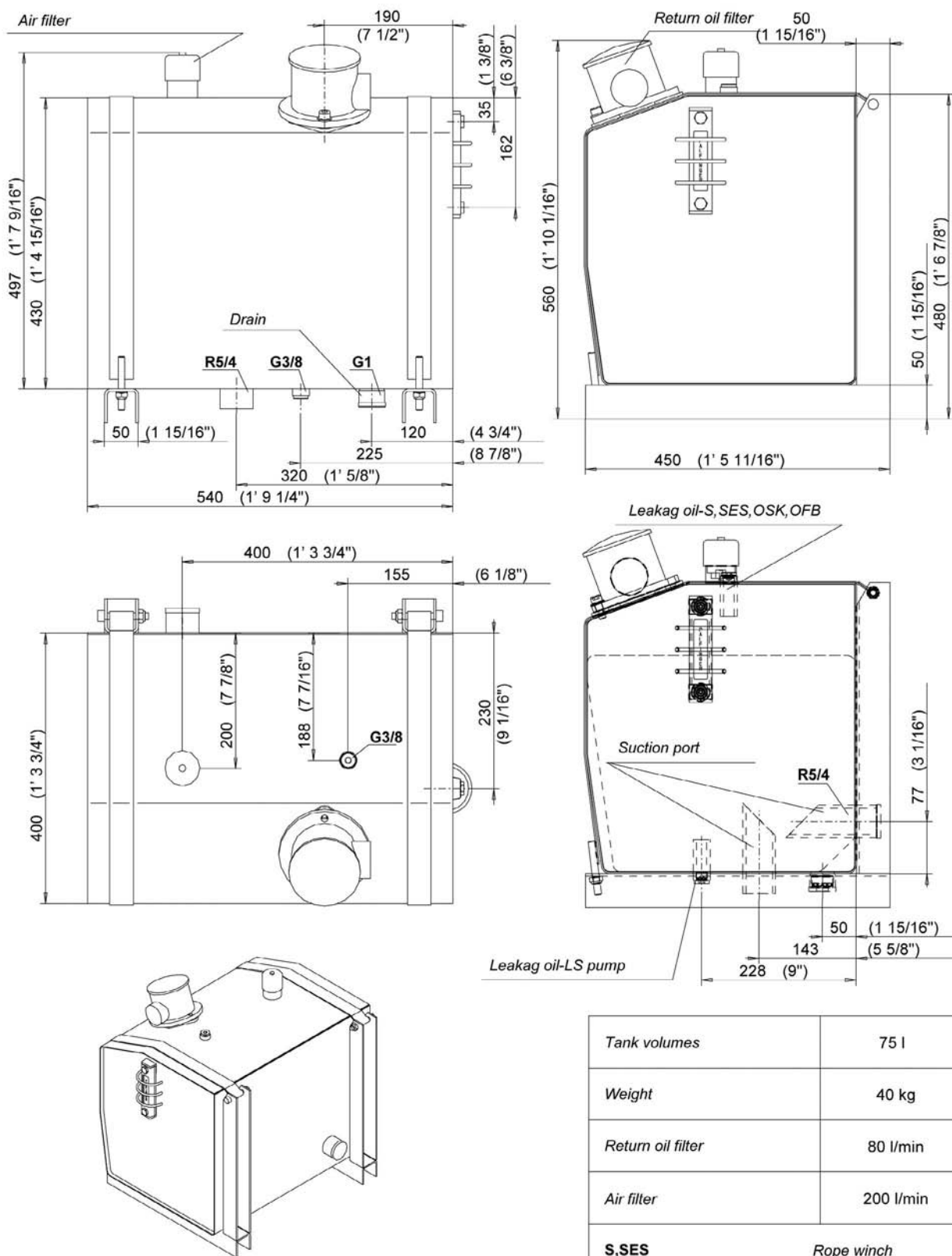


### Öltanks

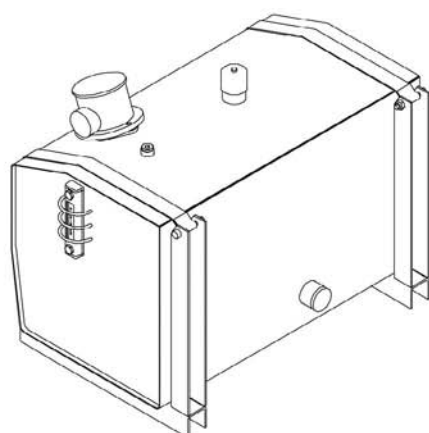
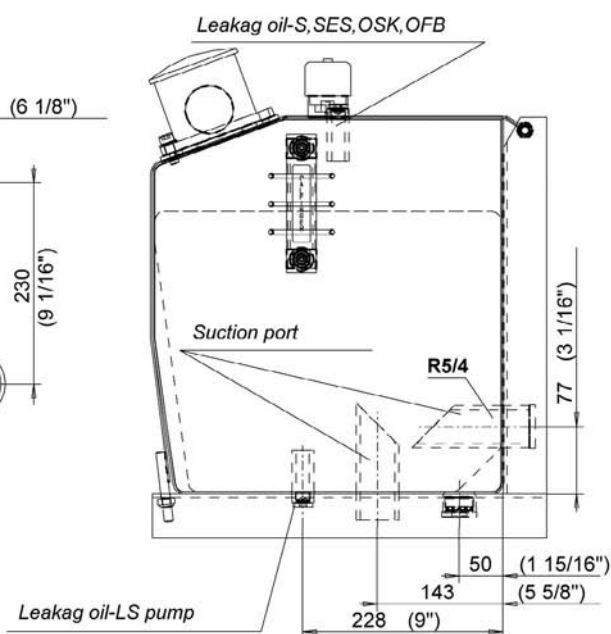
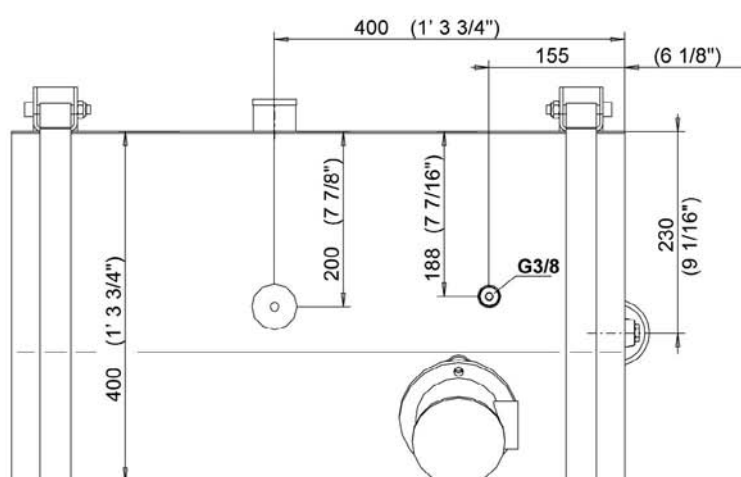
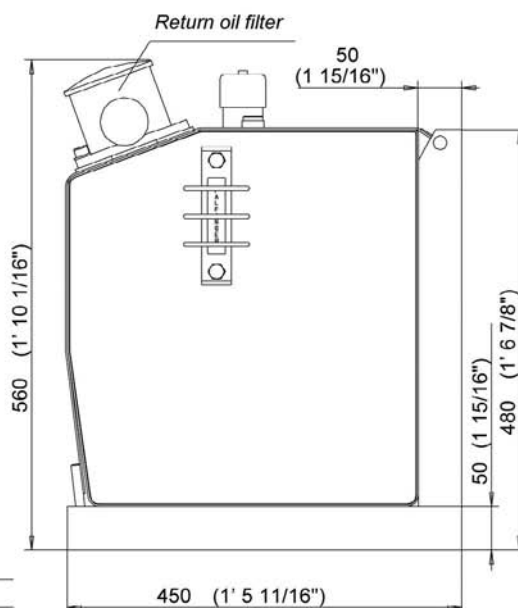
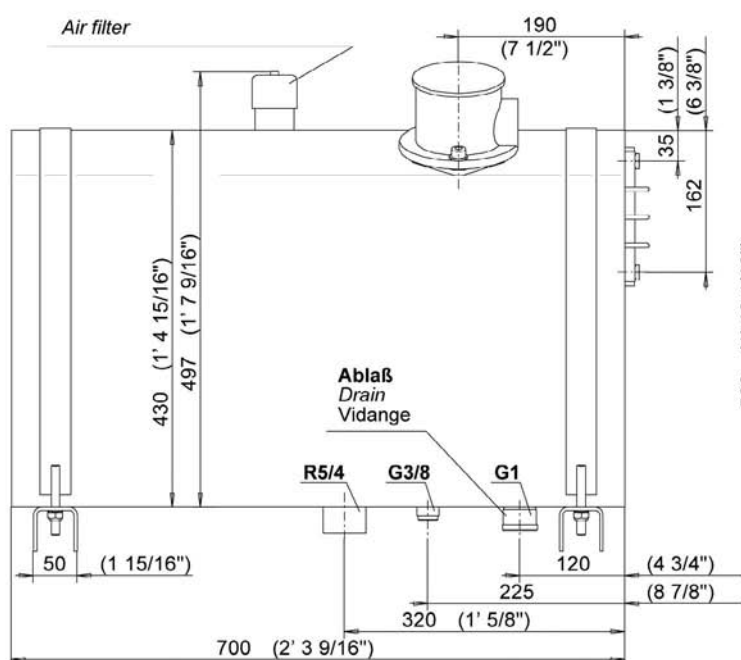
Typ	volume (l)	(kg)	A (mm)	B (mm)	C (mm)
<b>KTk001-BA</b>	75	38,7	567	440	555
<b>KTk021-BA</b>	100	45	727	440	555
<b>KTk002-BA</b>	140	81,2	554	702	660
<b>KTk003-BA</b>	200	87,3	749	702	660
<b>KTk004-BA</b>	300	98	1054	702	660
<b>KTk005-BA</b>	400	98	1477	702	660

### Technische Zeichnungen

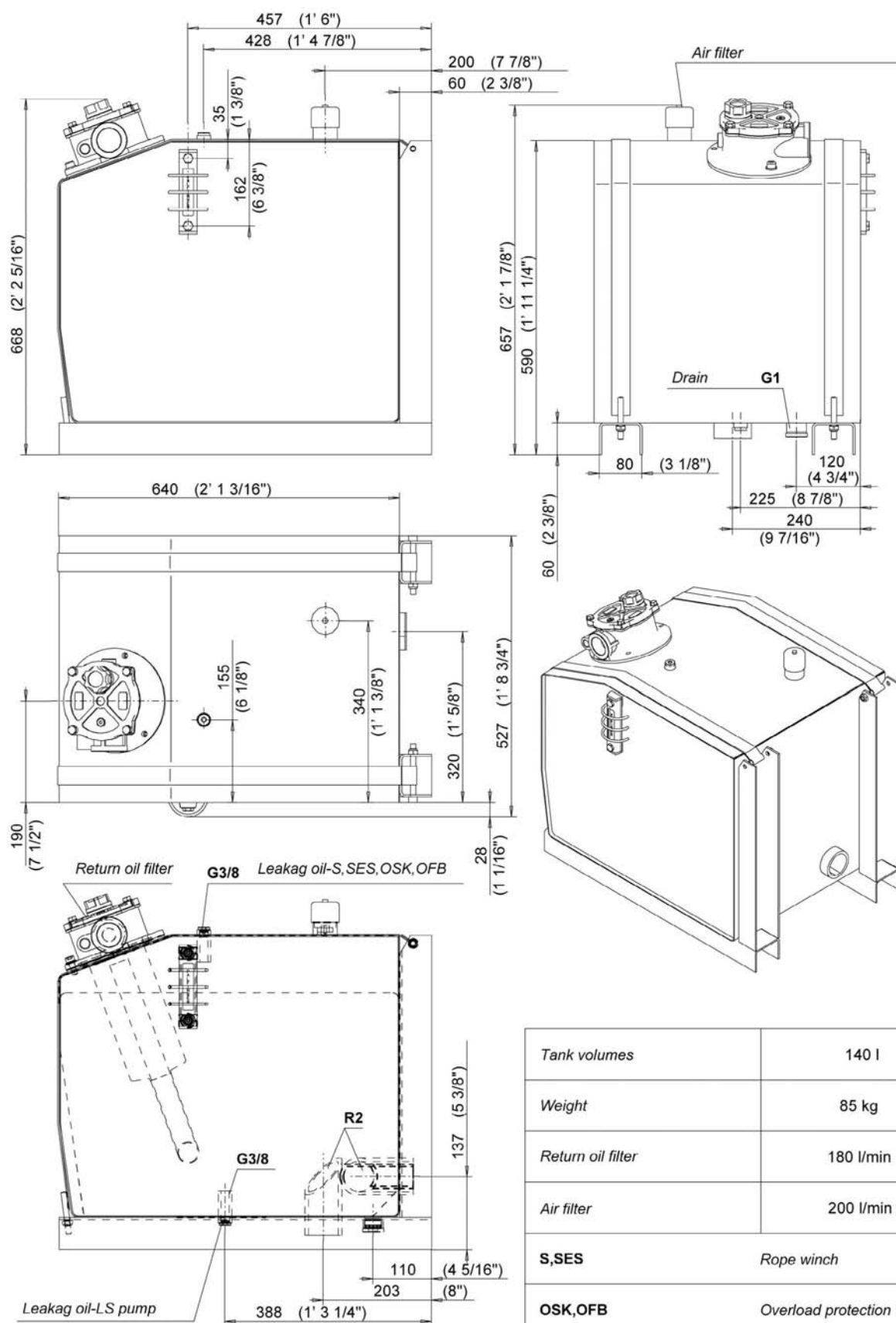




Tank volumes	75 l
Weight	40 kg
Return oil filter	80 l/min
Air filter	200 l/min
<b>S,SES</b>	Rope winch
<b>OSK,OFB</b>	Overload protection

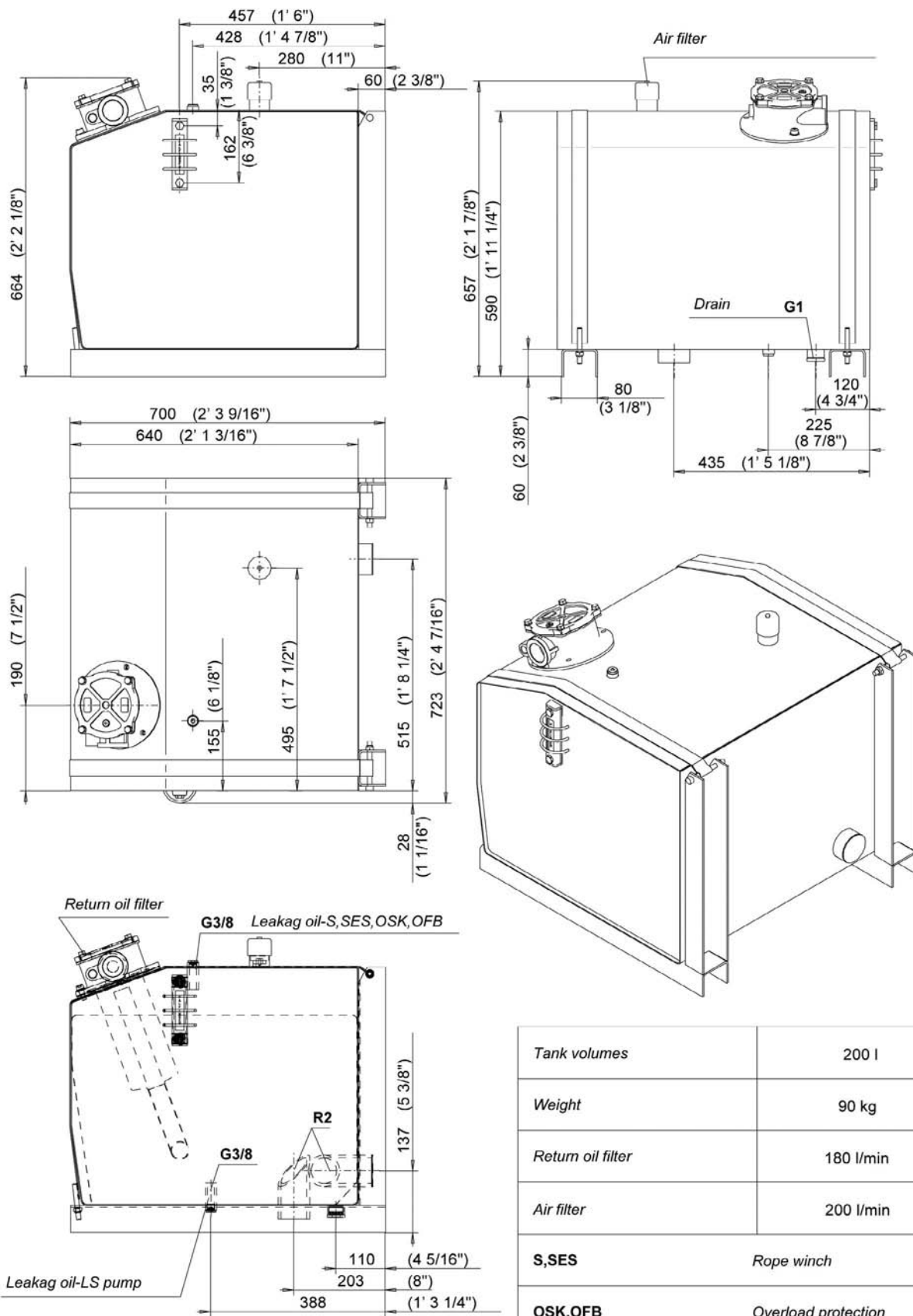


Tank volumes	100 l
Weight	45 kg
Return oil filter	80 l/min
Air filter	200 l/min
<b>S,SES</b>	Rope winch
<b>OSK,OFB</b>	Overload protection



Tank volumes	140 l
Weight	85 kg
Return oil filter	180 l/min
Air filter	200 l/min
S,SES	Rope winch
OSK,OFB	Overload protection

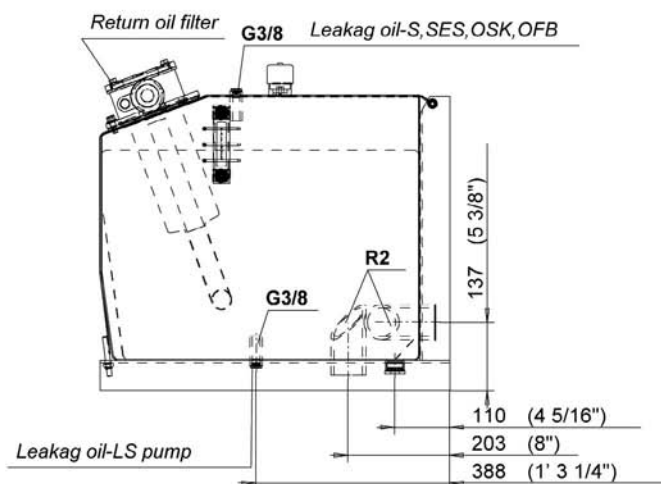
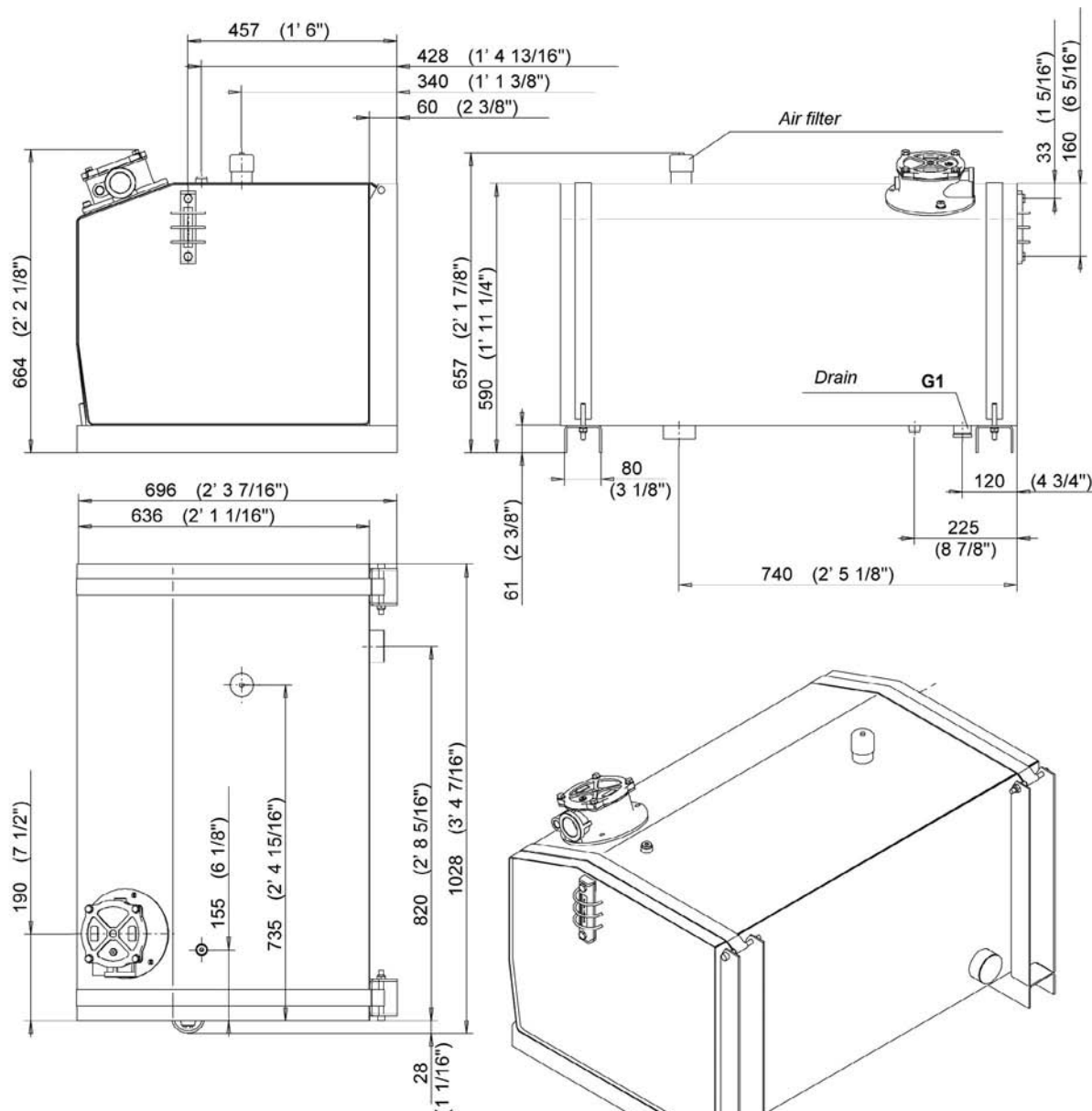




Tank volumes	200 l
Weight	90 kg
Return oil filter	180 l/min
Air filter	200 l/min
S,SES	Rope winch
OSK,OFB	Overload protection

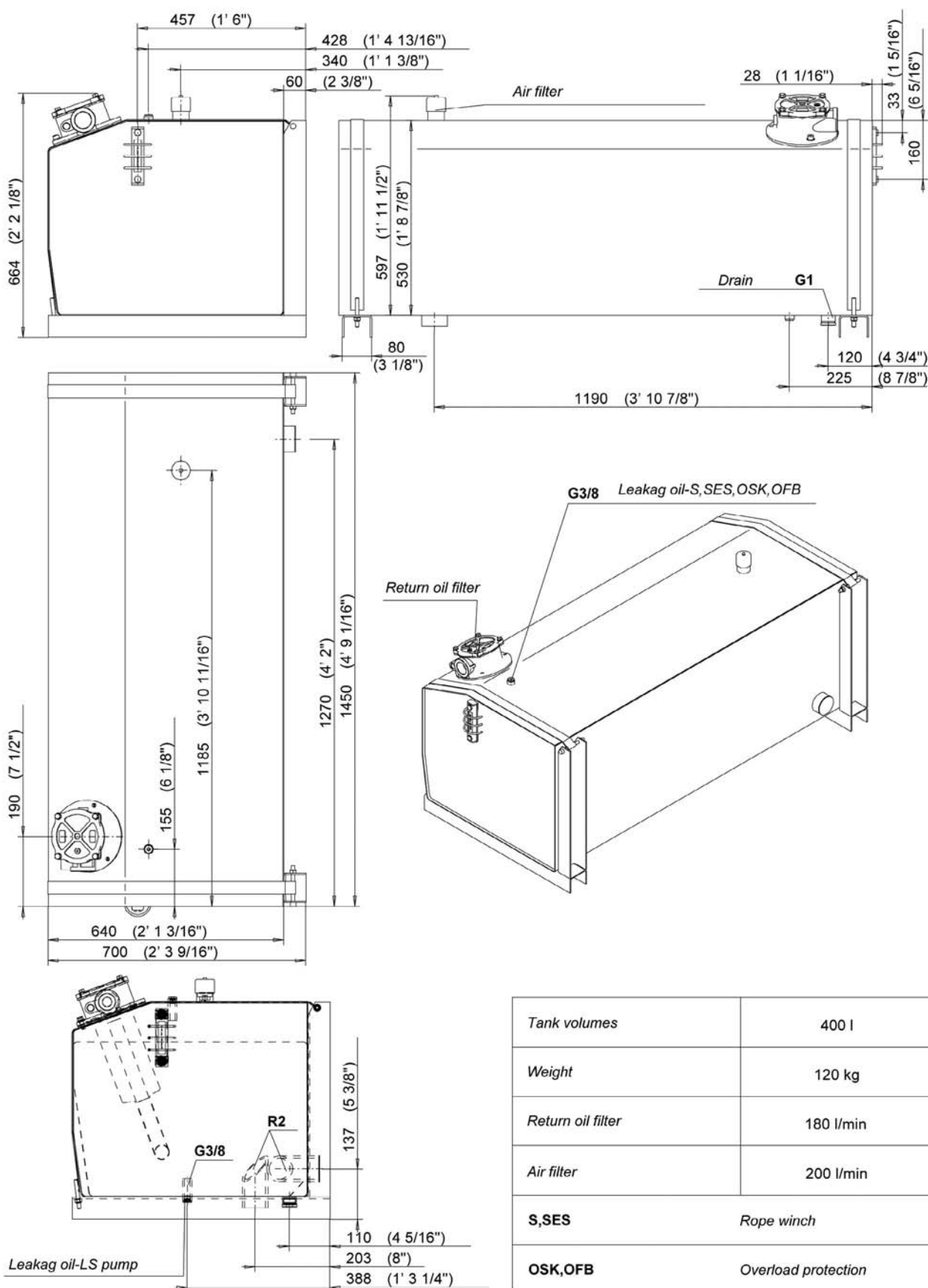






Tank volumes	300 l
Weight	100 kg
Return oil filter	180 l/min
Air filter	200 l/min
S,SES	Rope winch
OSK,OFB	Overload protection





Tank volumes	400 l
Weight	120 kg
Return oil filter	180 l/min
Air filter	200 l/min
S,SES	Rope winch
OSK,OFB	Overload protection