

COMPANY
WITH QUALITY SYSTEM
CERTIFIED BY DNV
=ISO 9001/2000=

OMFB[®]
HYDRAULIC COMPONENTS

HAND PUMPS





Double acting hand pumps suitable to operate single acting applications. They can be fitted also onto tank and are equipped with tapered lowering valve. These hand pumps can have 3 different sizes to perform various applications and to achieve smoother loads on the lever. They are available with nodular cast-iron body with cathaphoresis anti-corrosion treatment and nickel-plated spool.

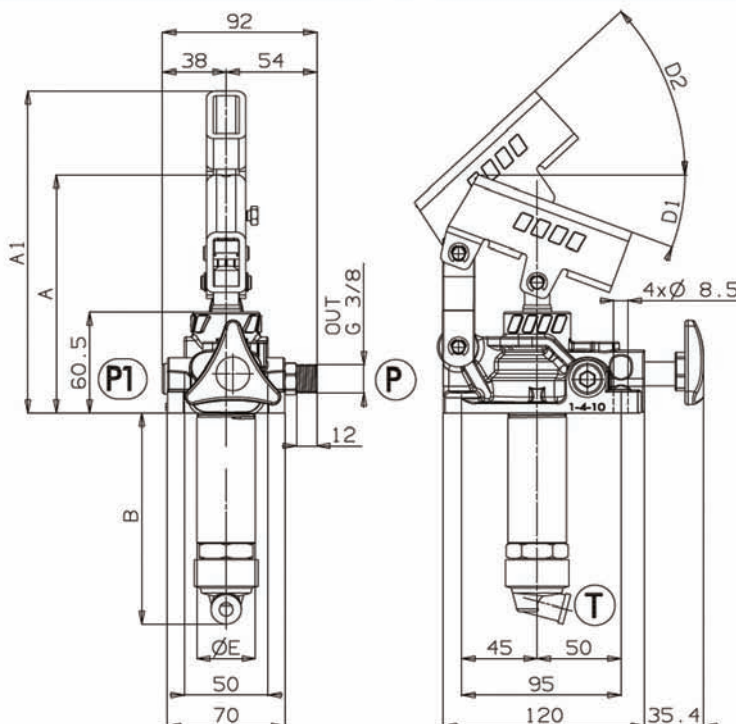
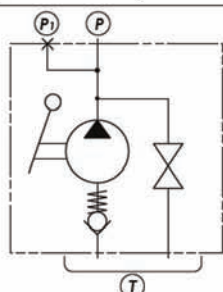
		Order code (without lever)	
		FULCRO 25	FULCRO 45
With Tank Litres	2	106-002-00021	106-003-00057
	3	106-002-00030	106-003-00011
	5	106-002-00049	106-003-00020
	7	106-002-00058	106-003-00039

Handle Part No. 106-000-00078

Overall Dimension

	A	A1	B	D1	D2	E
	mm	mm	mm	°	°	mm
FULCRO 25	142	193	127	20	45	35
FULCRO 45	141	193	138	20	45	42

Hydraulic layout



Technical data

Pump type	Max. pressure setting bar	Displacement			Weight Kg
		Full cm ³	Pull cm ³	Push cm ³	
FULCRO 25	300	25	13,4	11,6	2,9
FULCRO 45	270	45	23,7	21,3	3,2

Fluid	Mineral or synthetic compatible with the following seals: NBR, FKM, FPM, Nylon				
Kinematic viscosity suggested	Average ambient temp. (°C)	< -10	-10÷10	10÷35	> 35
	VG (cSt = mm ² /s)	22	32	46	68
Inlet pressure		-0,3 ÷ 2 bar			

Seal kit

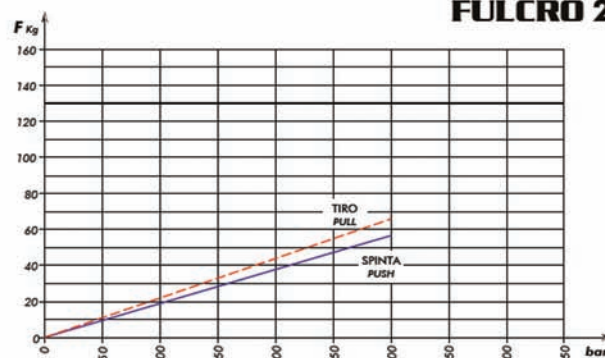
FULCRO 25	FULCRO 45
106-900-00453	106-900-00506



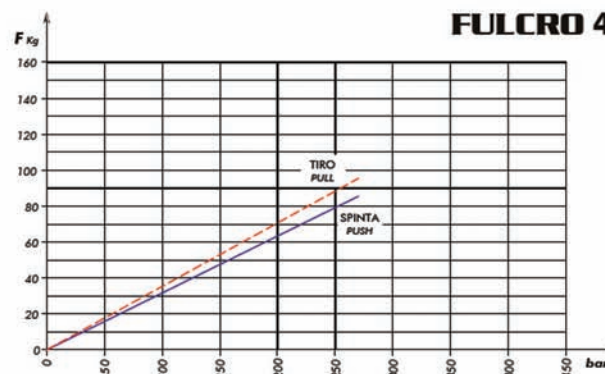
106-000-00078 LEVER FOR PMS/PMI L. 600 MM 35x15

Load while pumping with standard lever

FULCRO 25



FULCRO 45





Double acting hand pumps (the pump delivers oil both pushing and pulling the lever) suitable to operate single acting applications. They can be fitted also onto tank and are equipped with tapered lowering valve.

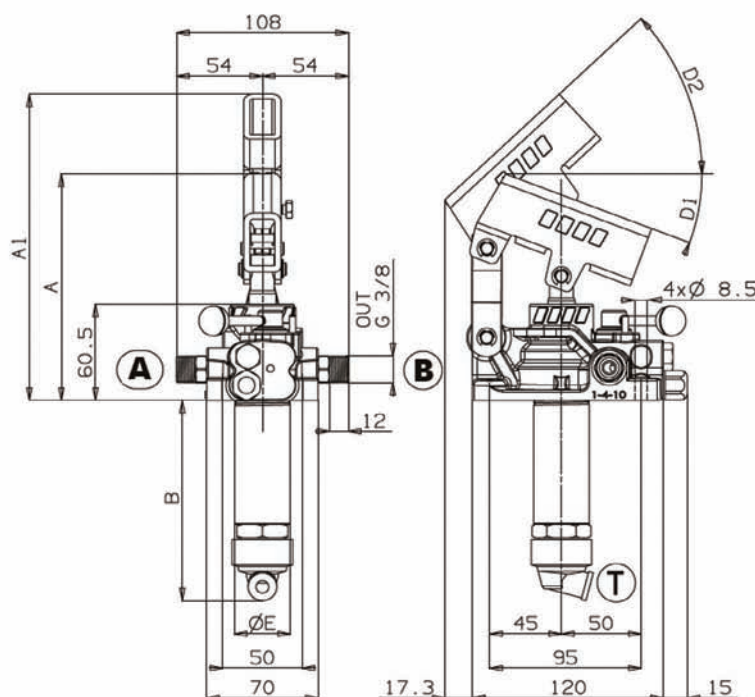
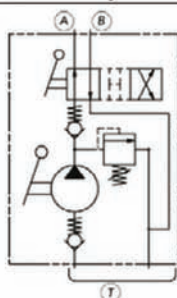
These hand pumps can have 3 different sizes to perform various applications and to achieve smoother loads on the lever. They are available with nodular cast-iron body with cathaphoresis anti-corrosion treatment and nickel-plated spool.

			Order code (without lever)	
			FULCRO 25	FULCRO 45
With Tank Litres	Plastic	2	106-011-00020	106-012-00056
		3	106-011-00039	106-012-00010
		5	106-011-00048	106-012-00029
		7	106-011-00057	106-012-00038
		10	106-011-00066	106-012-00047

Overall Dimension

	A	A1	B	D1	D2	E
	mm	mm	mm	°	°	mm
FULCRO 25	142	193	127	20	45	35
FULCRO 45	141	193	138	20	45	42

Hydraulic layout



Technical data

Pump type	Standard pressure setting	Max. pressure setting	Displacement			Weight
			Full cm ³	Pull cm ³	Push cm ³	
	bar	bar				Kg
FULCRO 25	160	300	25	13,4	11,6	2,9
FULCRO 45	160	270	45	23,7	21,3	3,2

Fluid	Mineral or synthetic compatible with the following seals: NBR, FKM, FPM, Nylon				
Kinematic viscosity suggested	Average ambient temp. (°C)	< -10	-10÷10	10÷35	> 35
	VG (cSt = mm ² /s)	22	32	46	68
Inlet pressure		-0,3 ÷ 2 bar			

Seal kit

FULCRO 25	FULCRO 45
106-900-00604	106-900-00659

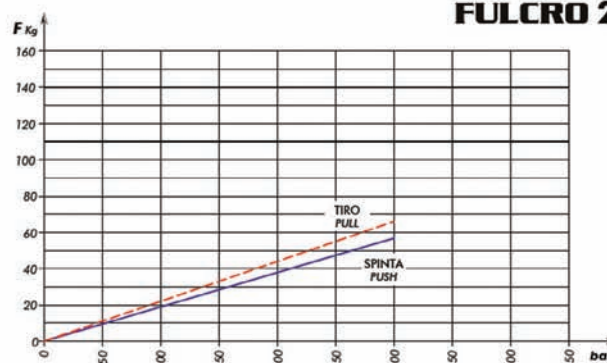


106-000-00078

AST. CON IMP.PMS/PMI L.600 MM 35x15
 LEVER FOR PMS/PMI L. 600 MM 35x15

Load while pumping with standard lever

FULCRO 25



FULCRO 45

